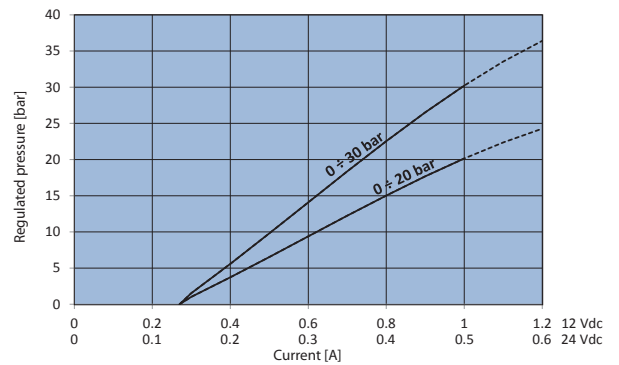
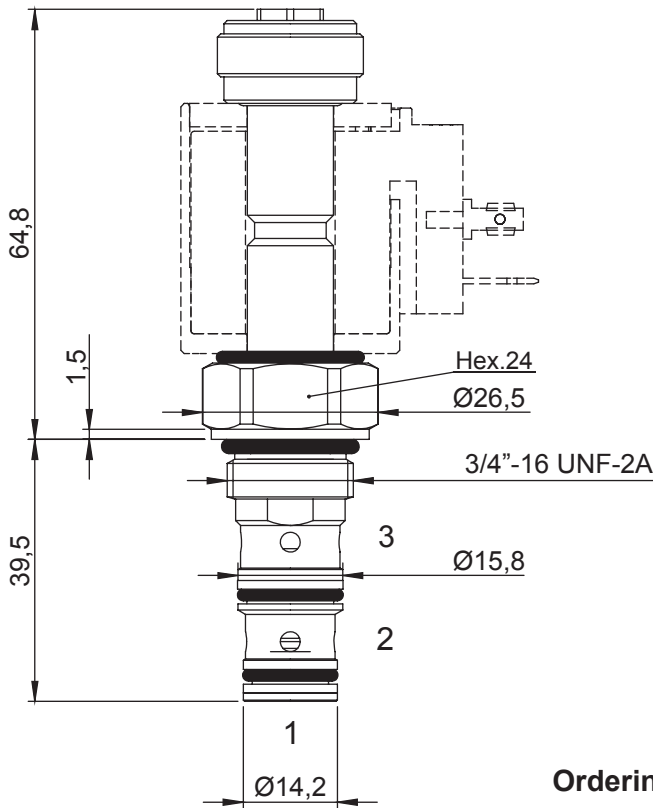
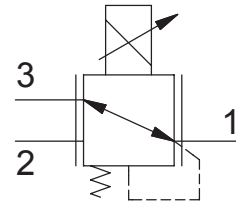


**ELECTRO-PROPORTIONAL PRESSURE REDUCING VALVE**

- Flow ..... **4 l/min**
- Max working pressure in 2 ..... **210 bar**
- Max working pressure in 1 ..... **30 bar**
- Max working pressure in 3 ..... **1 bar**
- Seals ..... **NBR and PTFE**
- Leakage ..... **150 cc/min**
- Max current at 12 Vcc ..... **1200mA**
- Max current at 24 Vcc ..... **600mA**
- PWM ..... **120 Hz**
- Hysteresis ..... **5%**
- Cartridge tightening torque ..... **30 Nm**
- Ring nut tightening torque ..... **5 Nm**
- Weight (with coil) ..... **0,4 Kg**
- Cavity ..... **C320000** page 218
- Body ..... **171212** page 187
- Coil (to be ordered separately) ..... **09400** page 179



**Ordering code**

**0 1 7 2 2**       **0**

SETTING RANGE	0	1
Min - Max [bar]	0 ÷ 20	0 ÷ 30

**0**

**No emergency**

**4**

**Push button**

**0**

**1**

**Without filter With filter**

