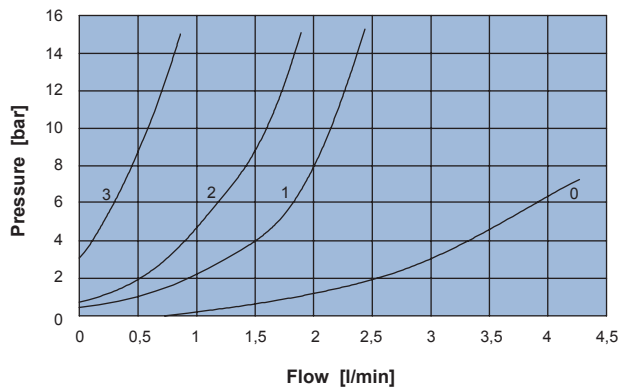
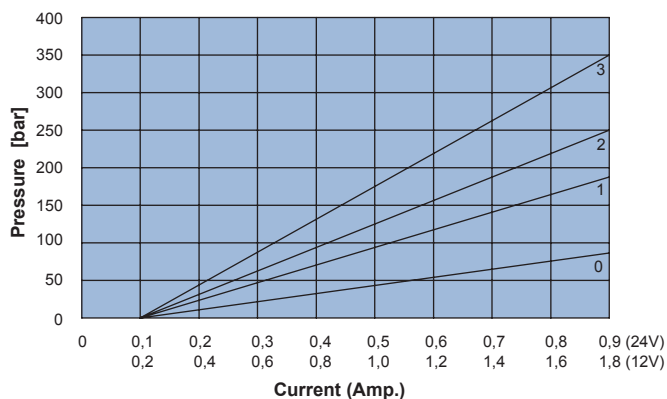
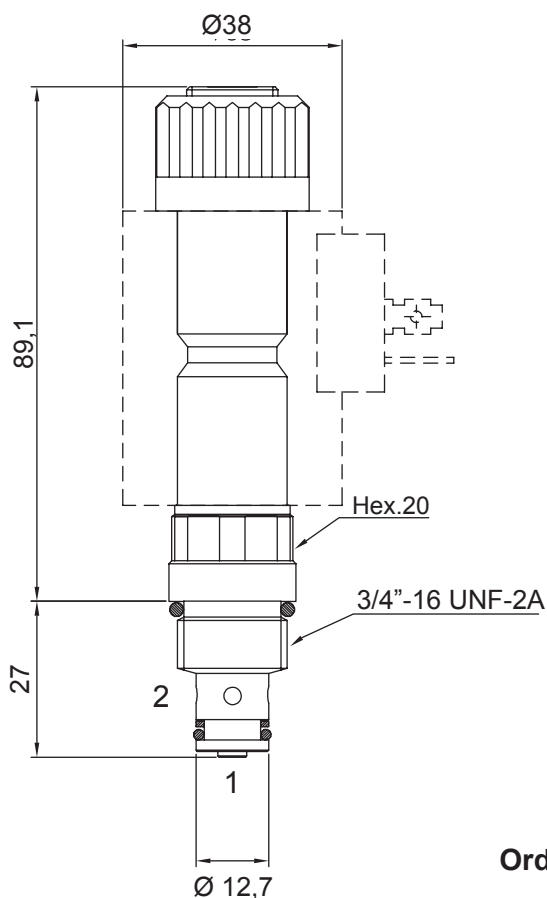
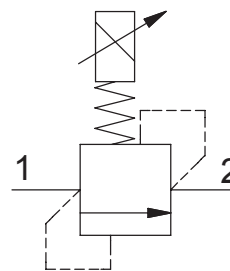


**ELECTRO-PROPORTIONAL PRESSURE RELIEF VALVE, DIRECT ACTING**

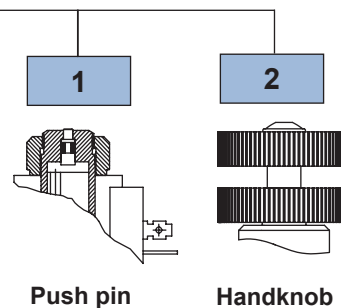
- Flow ..... **2 l/min**
- Max working pressure in 1. .... **350 bar**
- Max working pressure in 2. .... **20 bar**
- Seals ..... **NBR and PTFE**
- Max current at 12 Vcc ..... **1800mA**
- Max current at 24 Vcc ..... **900mA**
- PWM ..... **120 Hz**
- Hysteresis. .... **5%**
- Cartridge tightening torque ..... **30 Nm**
- Ring nut tightening torque ..... **4 Nm**
- Weight (with coil). .... **0,46 Kg**
- Cavity ..... **C220000** page 208
- Body. .... **171202** page 186
- Coil (to be ordered separately) ..... **09800** page 180



Ordering code

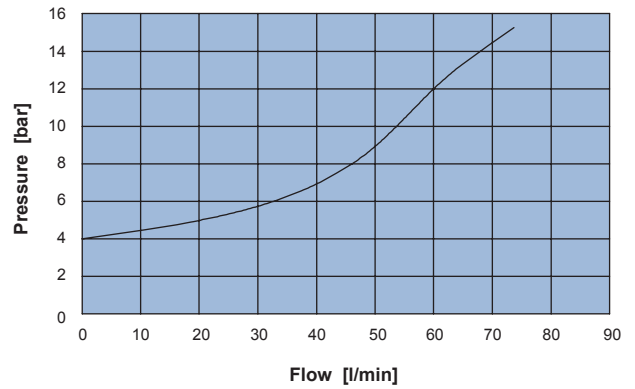
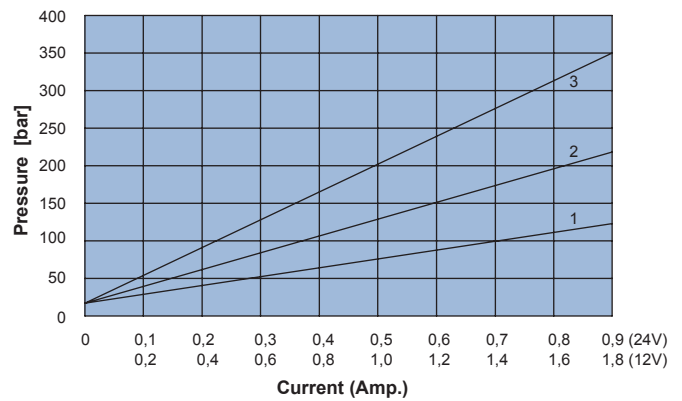
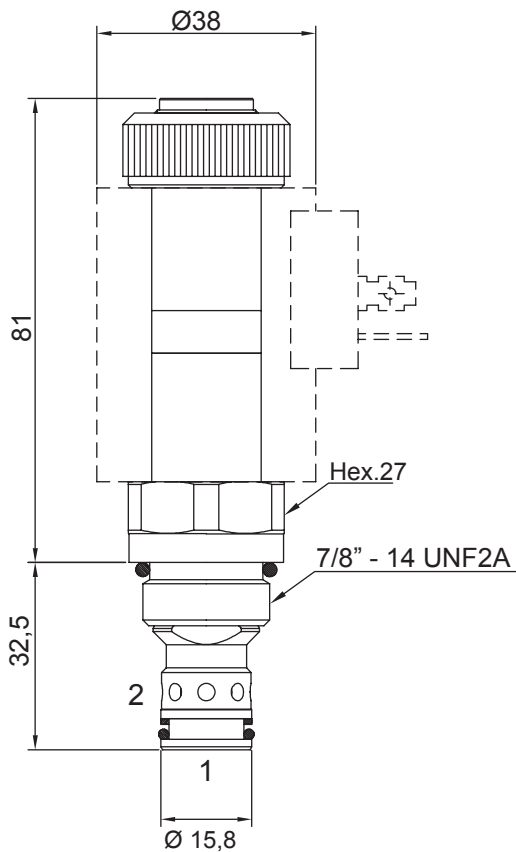
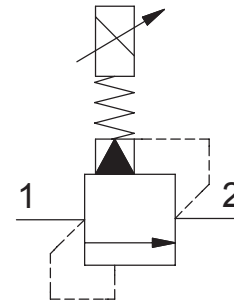
0 0 5 2 0   0   0 0

SETTING RANGE	0	1	2	3
Min - Max [bar]	10 ÷ 80	30 ÷ 150	40 ÷ 250	70 ÷ 350



**ELECTRO-PROPORTIONAL PRESSURE RELIEF VALVE, PILOT OPERATED**

- Flow ..... **60 l/min**
- Max working pressure ..... **350 bar**
- Seals ..... **NBR and PTFE**
- Max current at 12 Vcc ..... **1800mA**
- Max current at 24 Vcc ..... **900mA**
- PWM ..... **120 Hz**
- Hysteresis ..... **5%**
- Cartridge tightening torque ..... **40 Nm**
- Ring nut tightening torque ..... **4 Nm**
- Weight (with coil) ..... **0,48 Kg**
- Cavity ..... **C230000** page 210
- Body ..... **171302** page 191
- Coil (to be ordered separately) ..... **09800** page 180



**Ordering code**

**0 0 6 3 0**   **0**   **0 0**

SETTING RANGE	1	2	3
Min - Max [bar]	0 ÷ 150	0 ÷ 250	0 ÷ 350

