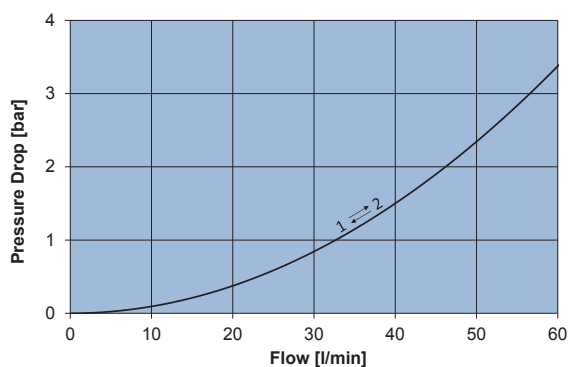
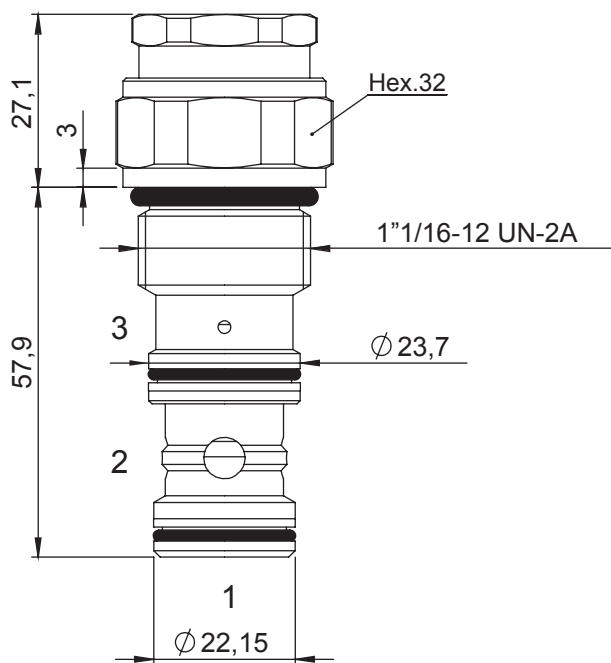
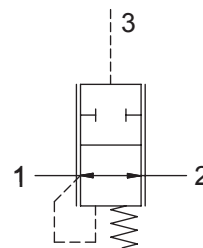


2 WAY NORMALLY OPEN POOL LOGIC ELEMENT

- Max Flow100 l/min
- Max working pressure 350 bar
- SealsNBR and PTFE
- Cartridge tightening torque..... 60 Nm
- Weight..... 0,3 Kg
- Cavity..... **C341000** page 223
- Body..... **172412** page 199



Ordering code

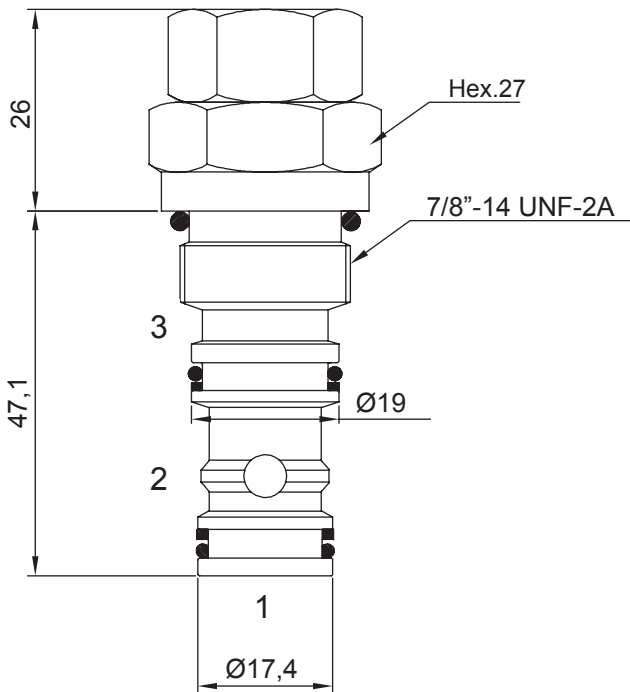
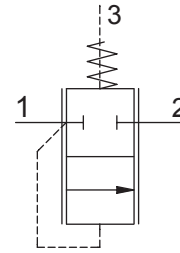
0 2 1 4 0 0 2 4 **0 0**

SPRINGS	4
Cracking pressure [bar]	5

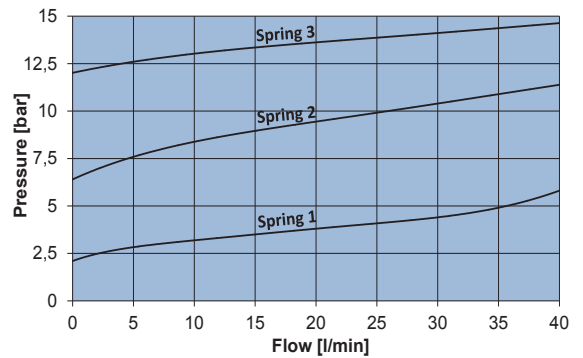


2 WAY NORMALLY CLOSED PRESSURE COMPENSATOR

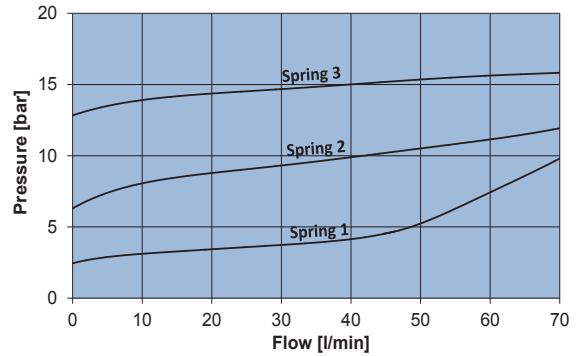
- Max Flow **70 l/min**
- Max working pressure **350 bar**
- Seals **NBR and PTFE**
- Cavity **C331000**
- Cartridge tightening torque **50 Nm**
- Weight **0,17 Kg**
- Cavity **C331000** page 221
- Body **172312** page 193



MAX FLOW 40 l/min (option 1)



MAX FLOW 70 l/min (option 2)



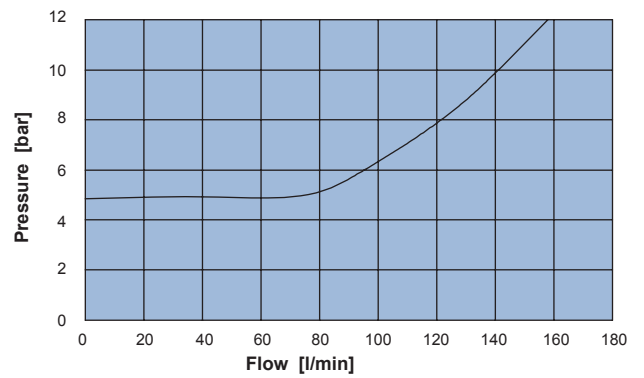
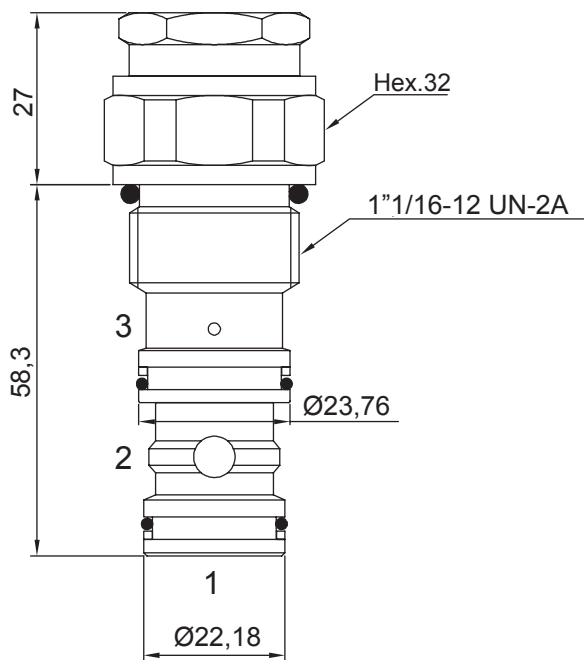
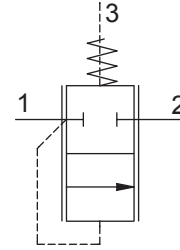
Ordering code

0 2 0 3 0 0 **0 0**

MAX FLOW	1	2	SPRINGS	1	2	3
Q [l/min]	40 l/min	70 l/min	Cracking pressure [bar]	2,5	7,5	11

2 WAY NORMALLY CLOSED PRESSURE COMPENSATOR

- Max Flow **150 l/min**
- Max working pressure..... **350 bar**
- Seals **NBR and PTFE**
- Cartridge tightening torque **60 Nm**
- Weight **0,26 Kg**
- Cavity..... **C341000** page **223**
- Body..... **172412** page **199**



Ordering code

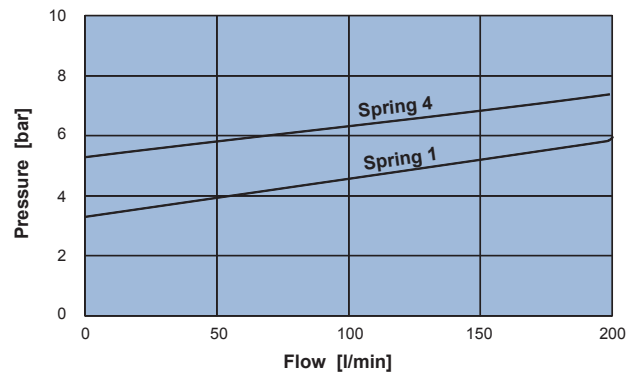
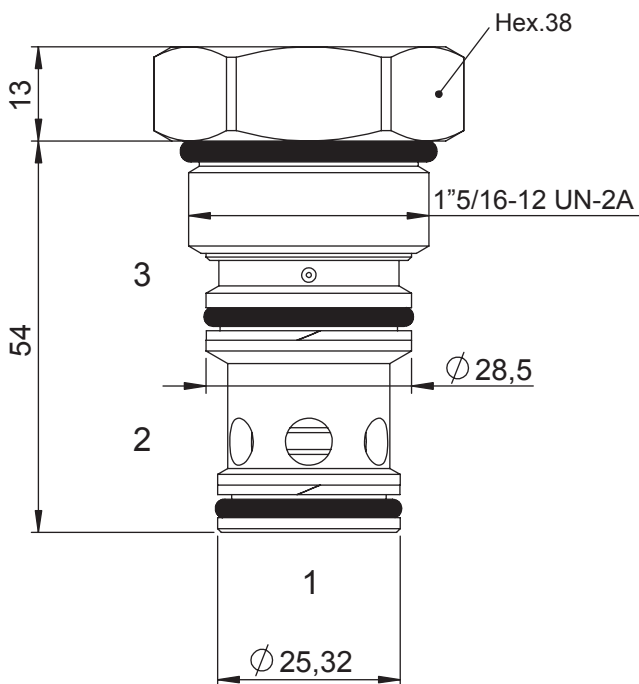
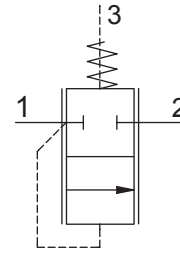
0 2 0 4 0 0 2 4 0 0

SPRINGS	4
Cracking pressure [bar]	5



2 WAY NORMALLY CLOSED PRESSURE COMPENSATOR

- Max Flow **200 l/min**
- Max working pressure **350 bar**
- Seals **NBR and PTFE**
- Cartridge tightening torque **.75 Nm**
- Weight **.0,3 Kg**
- Cavity..... **C351000** page **224**
- Body..... **172512** page **203**



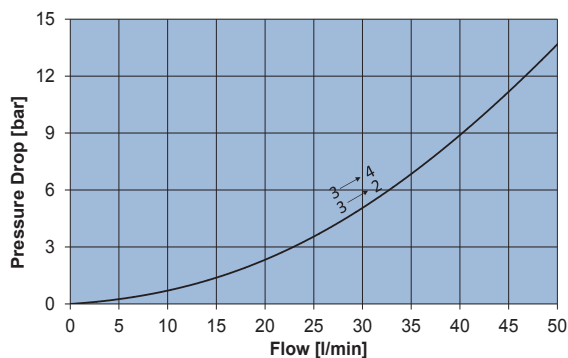
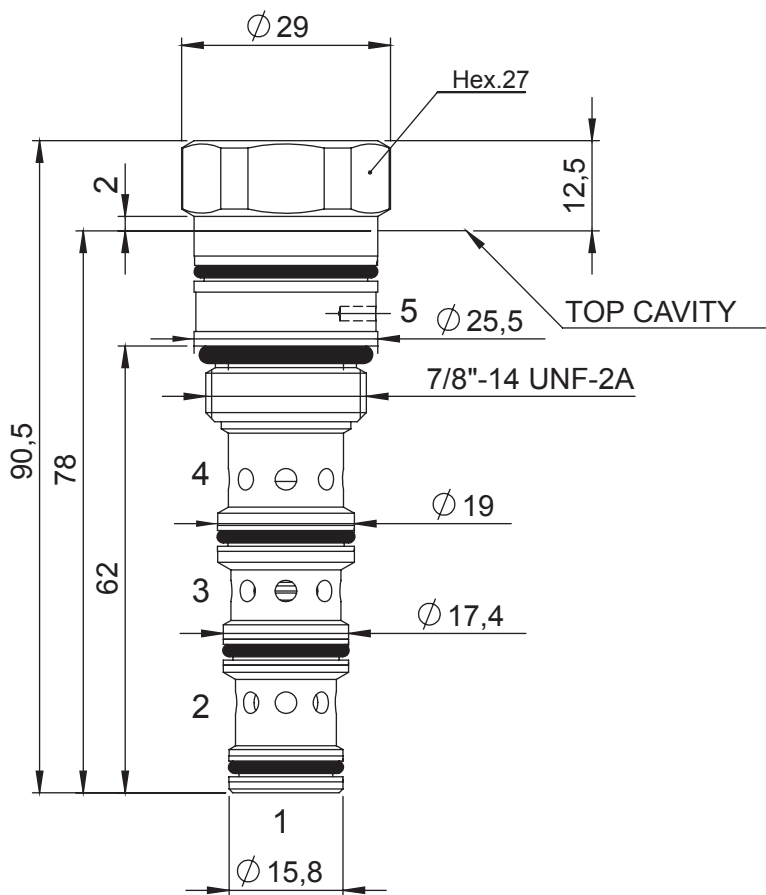
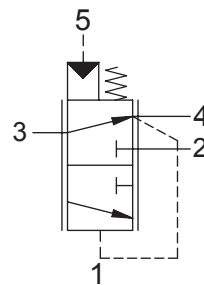
Ordering code

0 2 0 5 0 0 2 **0 0**

SPRINGS	1	4
Cracking pressure [bar]	2,8	4,8

3 WAY POST COMPENSATED PRESSURE COMPENSATOR

- Max flow from 3 to 2 **50 l/min**
- Max flow from 3 to 4 **40 l/min**
- Max working pressure **350 bar**
- Seals **NBR and PTFE**
- Cartridge tightening torque **50 Nm**
- Weight **0,2 Kg**
- Cavity **C533000** page 229



Ordering code

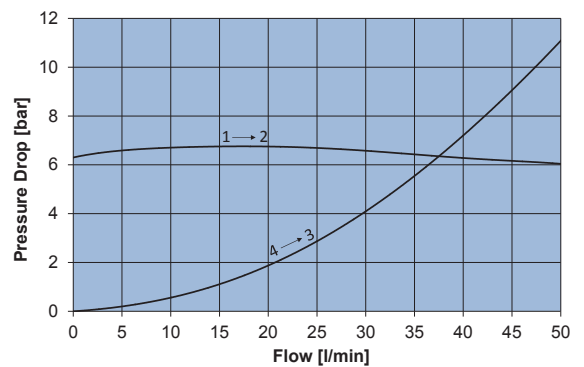
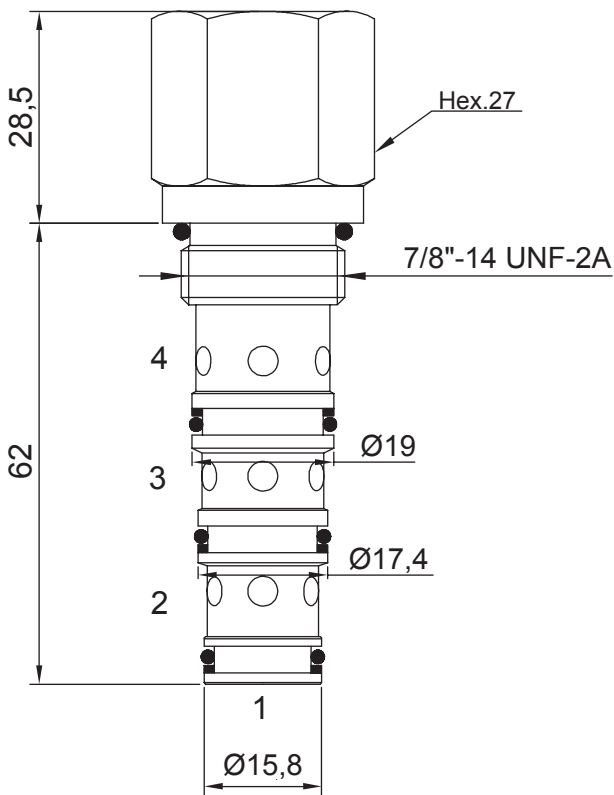
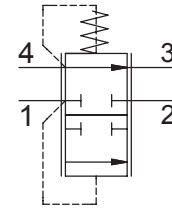
0 2 5 3 0 0 2 **0 0**

SPRINGS	4
Cracking pressure [bar]	5



4 WAY PRESSURE COMPENSATOR

- Flow **50 l/min**
- Max working pressure..... **350 bar**
- Leakage **100 cc/min**
- Seals **NBR and PTFE**
- Cartridge tightening torque **.50 Nm**
- Weight **0,21 Kg**
- Cavity **C430000** page **226**
- Body..... **171322** page **195**



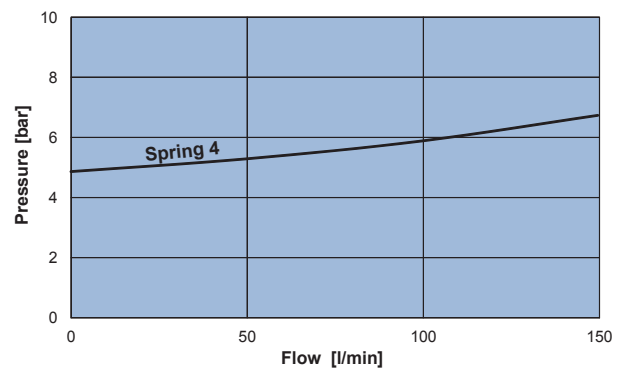
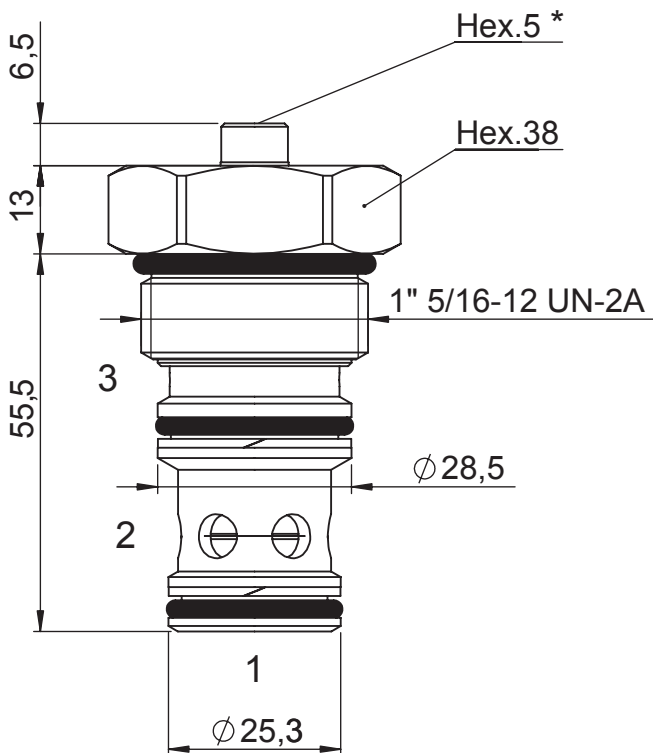
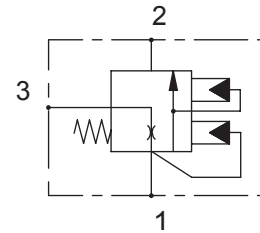
Ordering code

0 2 4 3 0 0 2 4 **0 0**

SPRINGS	4
Cracking pressure [bar]	5

2 WAY NORMALLY CLOSED LOGIC ELEMENT KICK-DOWN

- Max Flow **150 l/min**
- Max working pressure **350 bar**
- Seals **NBR and PTFE**
- Cartridge tightening torque **75 Nm**
- Weight **0,3 Kg**
- Cavity. **C351000** page **224**
- Body. **.172512** page **203**



***Note:**
- When starting the system it is recommended to bleed air from the cap-cartridges.

Ordering code

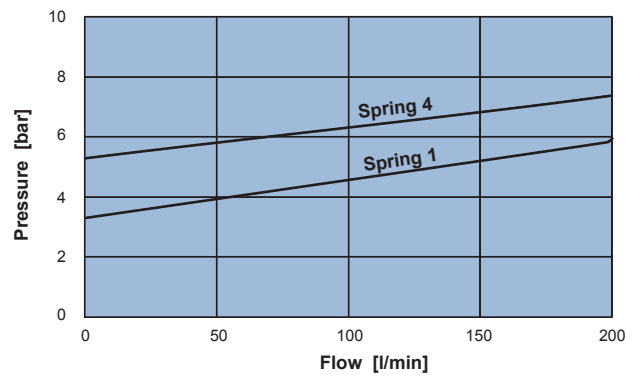
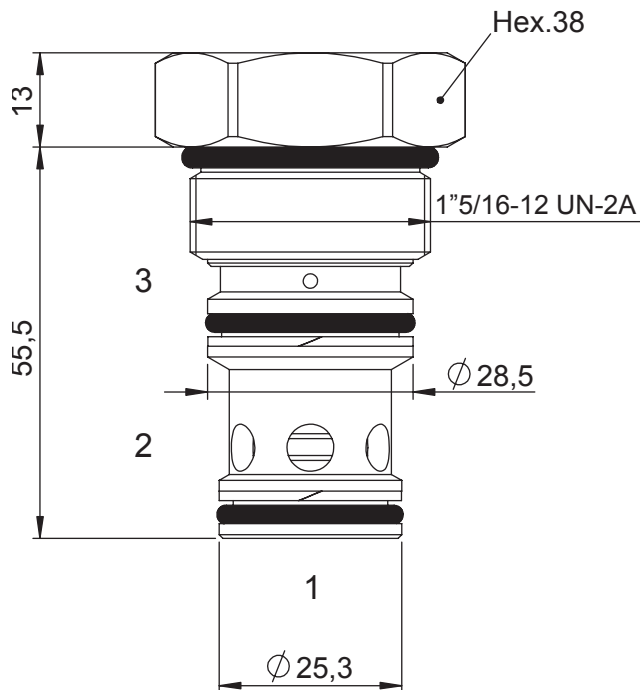
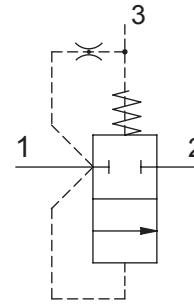
0 2 0 5 2 0 2 4 **0 0**

SPRINGS	4
Cracking pressure [bar]	4,8



2 WAY NORMALLY CLOSED LOGIC ELEMENT

- Max Flow **200 l/min**
- Max working pressure **350 bar**
- Seals **NBR and PTFE**
- Cartridge tightening torque **75 Nm**
- Weight **0,3 Kg**
- Cavity **C351000** page **224**
- Body **172512** page **203**



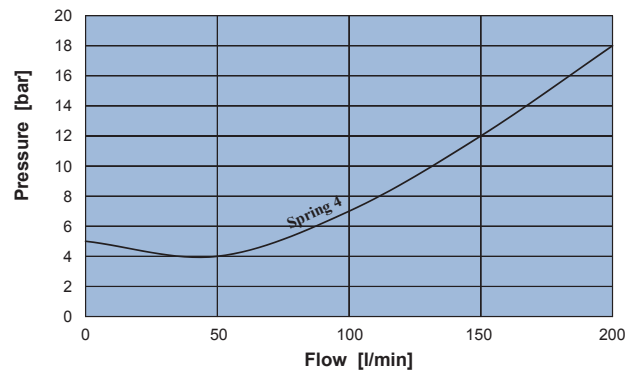
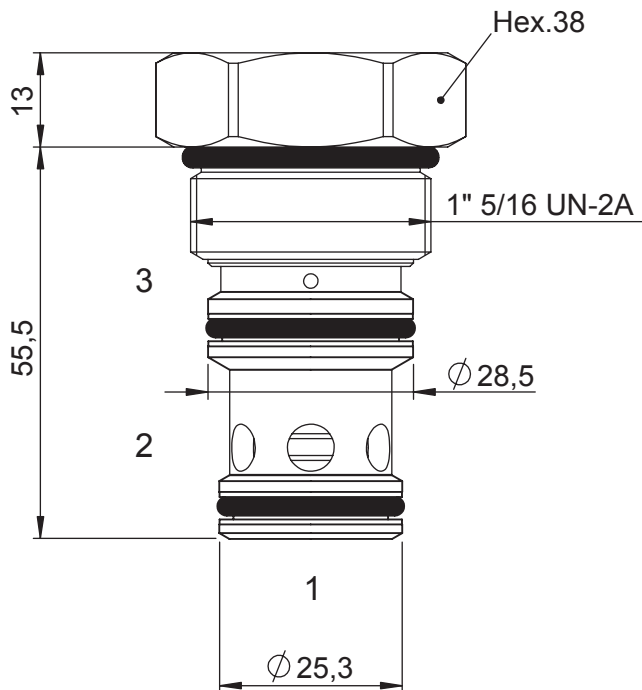
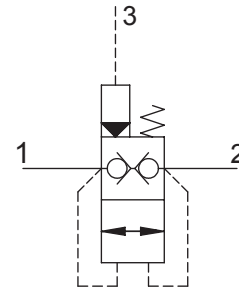
Ordering code

0 2 0 5 1 0 2 **0 0**

SPRINGS	1	4
Cracking pressure [bar]	2,8	4,8

2 WAY NORMALLY CLOSED POPPET LOGIC ELEMENT

- Flow200 l/min
- Max working pressure.....350 bar
- SealsNBR and PTFE
- Cavity.....C351000
- Cartridge tightening torque..... 75 Nm
- Weight0,3 Kg
- Cavity.....C351000 page 224
- Body.....172512 page 203



Ordering code

0 2 3 5 0 0 2 0 0

SPRINGS	1	4
Cracking pressure [bar]	2,8	4,8

