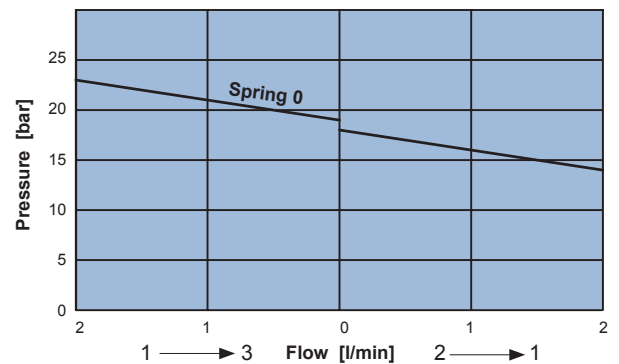
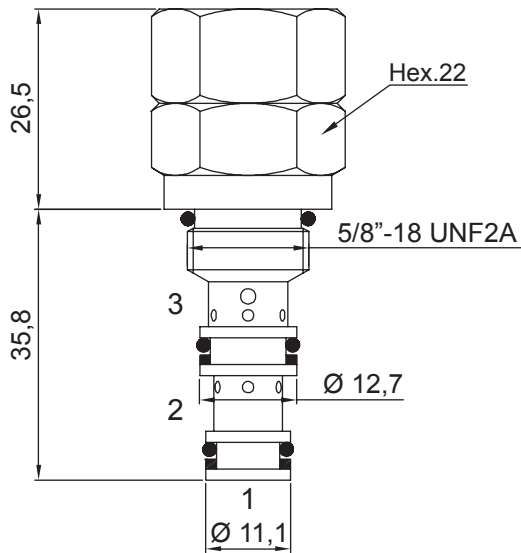
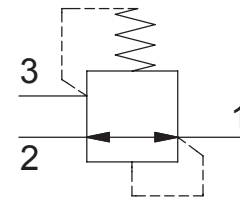


FIX SETTING DIRECT ACTING PRESSURE REDUCING VALVE

- Flow **2 l/min**
- Max working pressure in 2 **350 bar**
- Max working pressure in 1 **18 bar**
- Max working pressure in 3 **1 bar**
- Seals **NBR and PTFE**
- Cartridge tightening torque **15 Nm**
- Weight **0,10 Kg**
- Cavity **C310000** page 217



Note:
- In case of different setting from standard, contact NEM customer service.

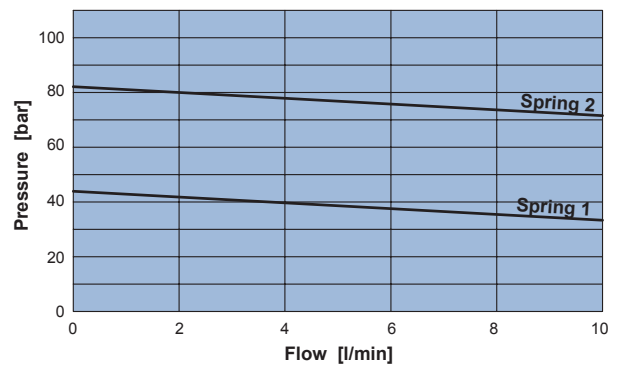
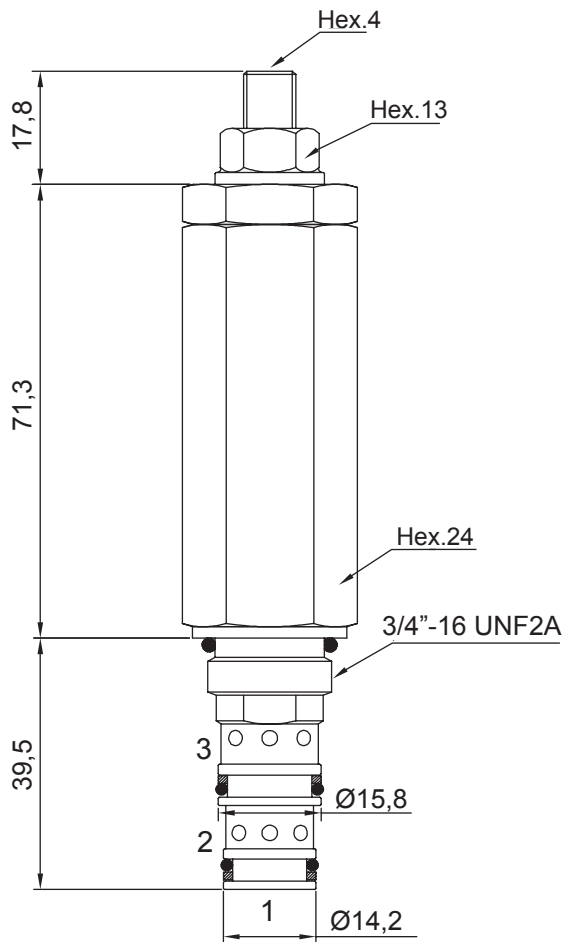
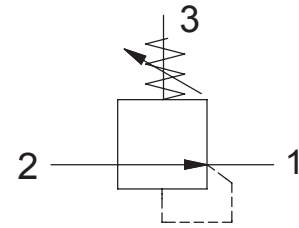
Ordering code

0 1 2 1 2 0 **3 0 0**

SPRINGS	0
Standard setting [bar]	18

DIRECT ACTING PRESSURE REDUCING VALVE

- Flow **10 l/min**
- Max working pressure in 2 **350 bar**
- Max working pressure in 1 **100 bar**
- Max working pressure in 3 **1 bar**
- Seals **NBR and PTFE**
- Cartridge tightening torque **.40 Nm**
- Weight **0,25 Kg**
- Cavity..... **C320000** page **218**
- Body..... **171212** page **187**



Note:
Unidirectional pressure reducing cartridge (without embedded relief function).

Ordering code

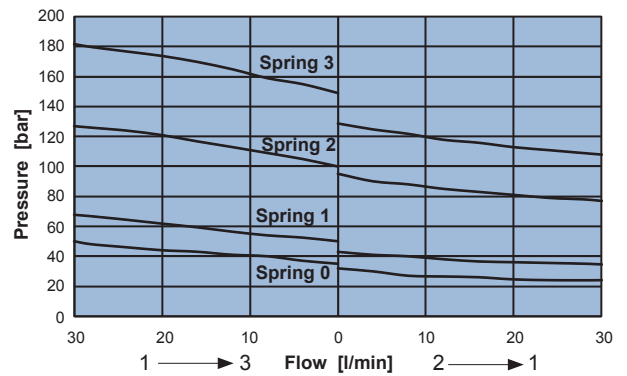
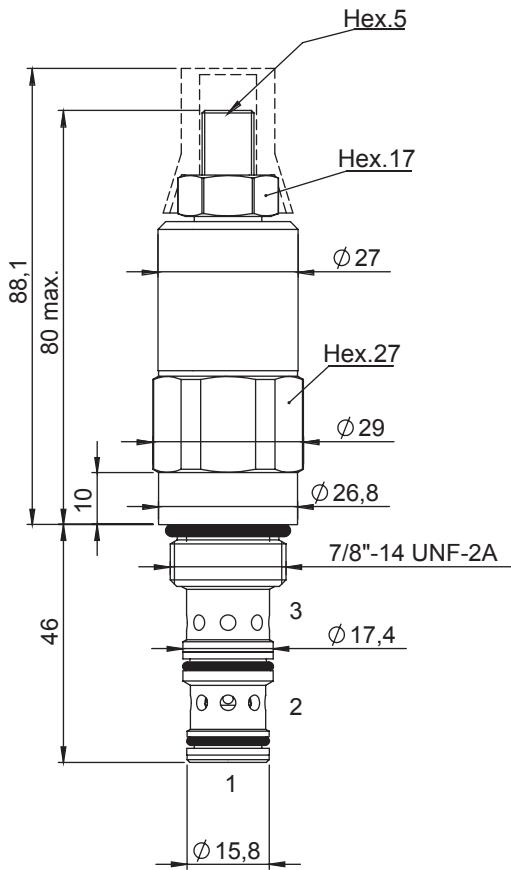
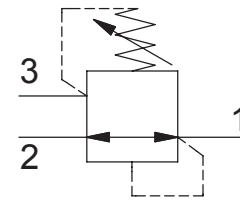
0 1 2 2 1 **0 0 0 0**

SPRINGS	1	2
Setting range [bar]	5 - 50	20 - 100
Pressure Increase [bar/turn]	7	17
Standard setting [bar]	25	50



DIRECT ACTING PRESSURE REDUCING VALVE

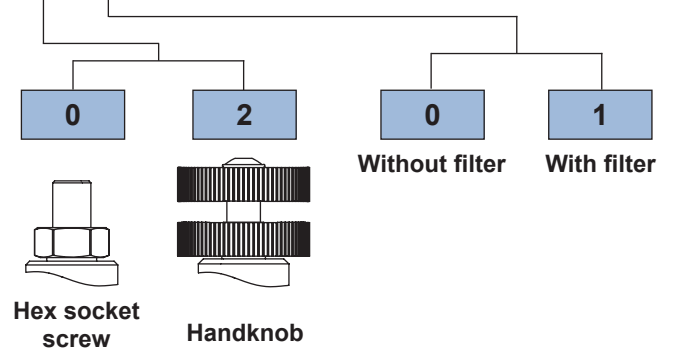
- Flow **30 l/min**
- Max working pressure in 2 **350 bar**
- Max working pressure in 1 **150 bar**
- Max working pressure in 3 **1 bar**
- Seals **NBR and PTFE**
- Cartridge tightening torque **50 Nm**
- Weight **0,31 Kg**
- Leakage with 350 bar in 2: **70 cc/min**
- Tamper proof cap. **cod. 4029250280**
- Cavity **C330000** page 220
- Body **171312** page 192



Ordering code

0 1 2 3 2 0 0 0

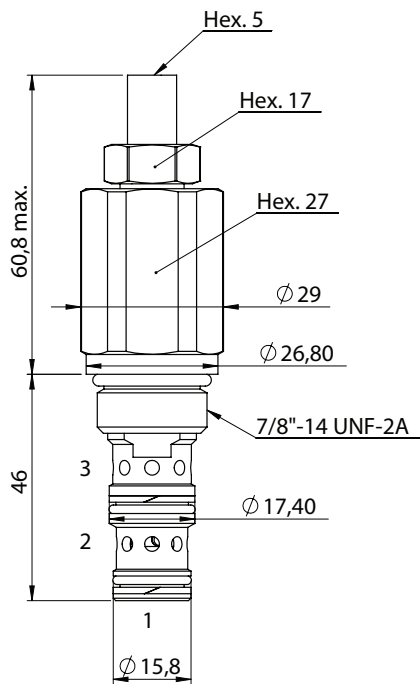
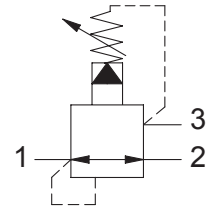
SPRINGS	0	1	2	3
Setting range [bar]	5 - 30	15 - 55	20 - 103	30 - 150
Pressure Increase [bar/turn]	5	8	20	30
Standard setting [bar]	25	50	100	140



Adjustments

PILOT OPERATED PRESSURE REDUCING VALVE

- Flow **60 l/min**
- Max working pressure in 2 **350 bar**
- Max working pressure in 1 **350 bar**
- Max working pressure in 3 **1 bar**
- Seals **NBR and PTFE**
- Cartridge tightening torque **60 Nm**
- Weight **0,25 Kg**
- Tamper proof cap **cod. 4029250280**
- Cavity **C330000** page 220
- Body **171312** page 192



Ordering code
0 1 3 3 2 0 0 0

SPRINGS	3
Setting range min.-max. [bar]	20 - 350
Pressure Increase [bar/by turn]	136
Standard setting 4 l/min [bar]	100

