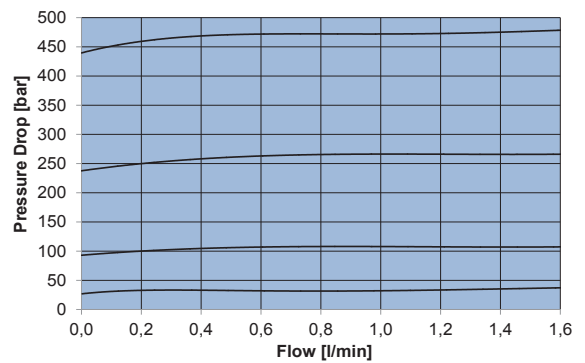
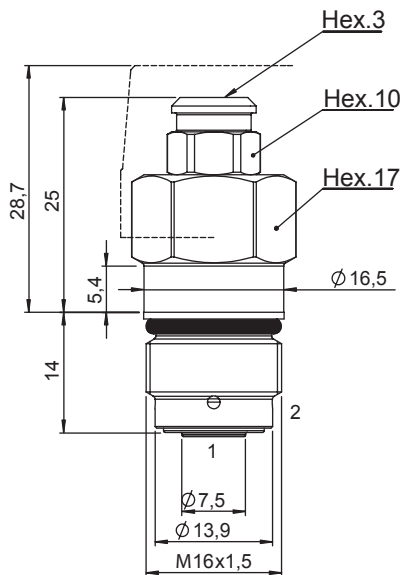
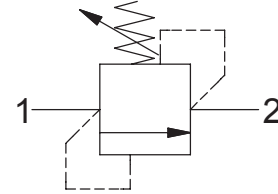


**DIRECT ACTING RELIEF VALVE**

- Flow ..... **1,5 l/min**
- Max working pressure..... **450 bar**
- Seals ..... **NBR and PTFE**
- Cartridge tightening torque..... **.40 Nm**
- Weight ..... **0,05 Kg**
- Tamper proof cap..... **cod.9021015101**
- Cavity ..... **S000020** page 232



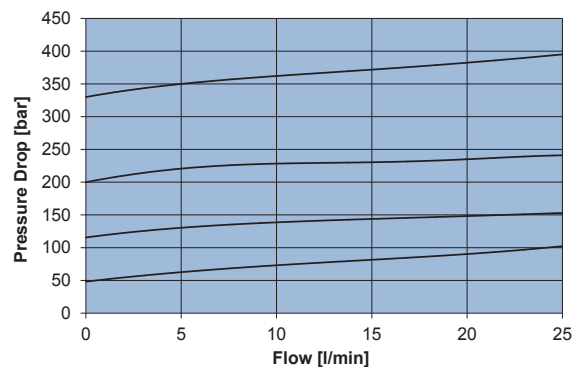
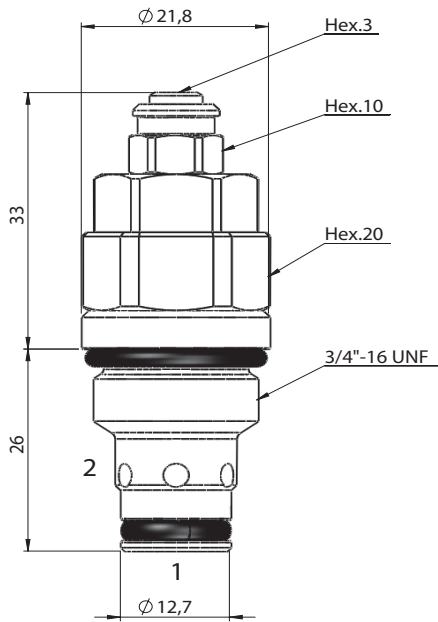
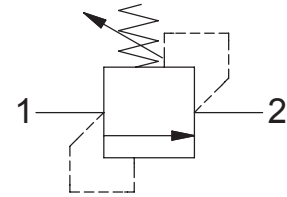
**Ordering code**

**00210**   **00E0**

SPRINGS	0	1	2	3
Setting range min.-max. [bar]	5 - 30	30 - 100	100 - 250	250 - 450
Pressure Increase [bar/turn]	10	56	136	250
Standard setting 20 cc/min [bar]	20	50	100	250

**DIRECT ACTING RELIEF VALVE**

- Flow ..... **20 l/min**
- Max working pressure..... **420 bar**
- Seals ..... **NBR and PTFE**
- Cartridge tightening torque..... **.40 Nm**
- Weight ..... **0,085 Kg**
- Tamper proof cap..... **cod.9021015101**
- Cavity ..... **C220000** page **208**
- Body..... **171202** page **186**



**Ordering code**

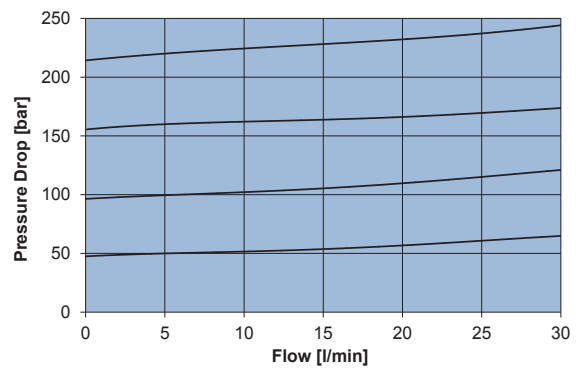
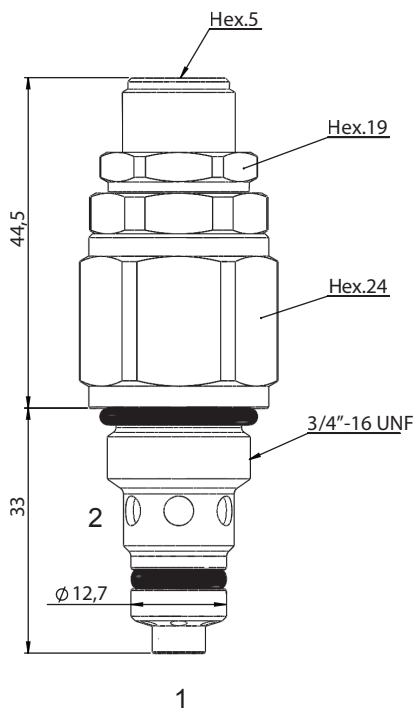
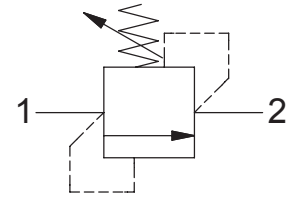
**0 0 2 2 0** 1 **0 0 0**

<b>SPRINGS</b>	<b>1</b>	<b>2</b>	<b>3</b>
Setting range min.-max. [bar]	5 - 160	40 - 220	50 - 350
Pressure Increase [bar/turn]	36	34	63
Standard setting 4 l/min [bar]	50	100	250



**DIRECT ACTING RELIEF VALVE**

- Flow ..... **30 l/min**
- Max working pressure ..... **350 bar**
- Seals ..... **NBR and PTFE**
- Cartridge tightening torque ..... **40 Nm**
- Weight ..... **0,145 Kg**
- Cavity ..... **C222000** page 209



**Note**

*This cartridge must be installed in to the SAE 08/2 long cavity, according the specifications of C222000.*

*This type of valve is characterized by a dumped plunger that enable stable relief characteristics.*

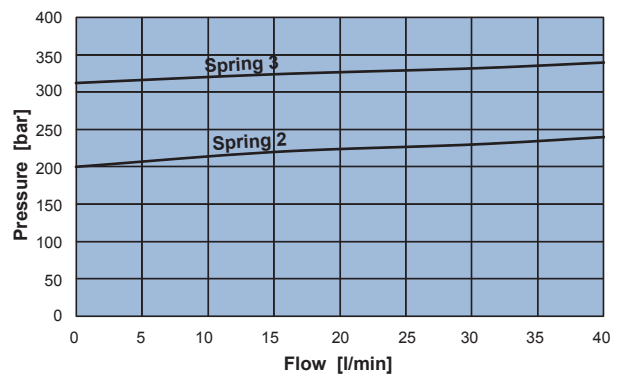
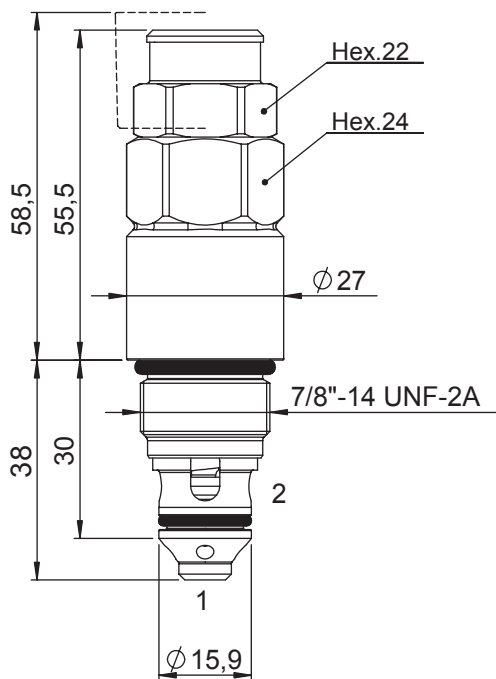
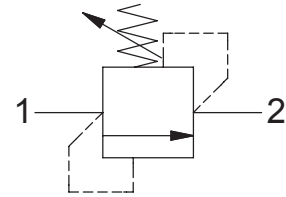
**Ordering code**

**0 0 2 2 3**   **0 0 0 0**

SPRINGS	0	1	2	3
Setting range [bar]	15-50	50-120	120-200	200-350
Pressure Increase [bar/turn]	8	20	33	59
Standard setting 4 l/min [bar]	25	100	150	250

**DIRECT ACTING RELIEF VALVE**

- Flow ..... **40 l/min**
- Max working pressure ..... **410 bar**
- Seals ..... **NBR and PTFE**
- Cartridge tightening torque ..... **60 Nm**
- Weight ..... **0,23 Kg**
- Tamper proof cap ..... **cod. 9021030190**
- Cavity ..... **C232000** page 212



**Note**  
This cartridge must be installed in to the SAE 10/2 long cavity, according the specifications of C232000.

**Ordering code**

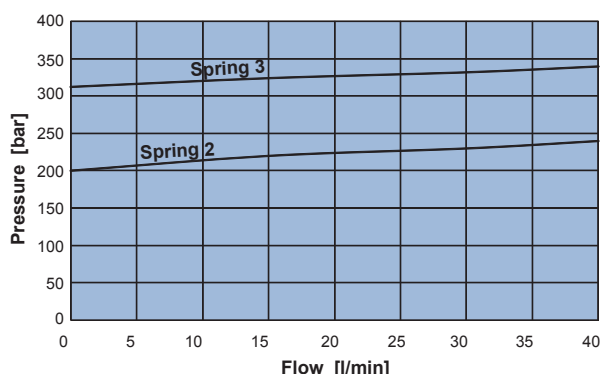
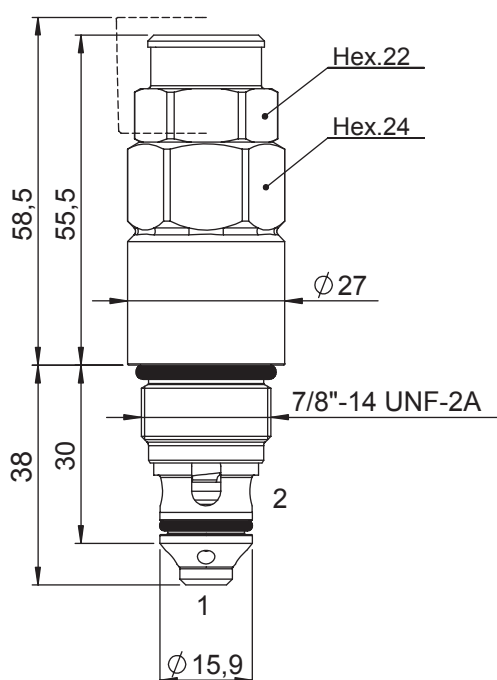
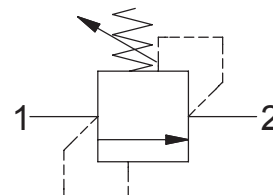
**00233**    **0000**

SPRINGS	1	2	3
Setting range min.-max. [bar]	40 - 140	120 - 250	220 - 410
Pressure Increase [bar/by turn]	23	31	53
Standard setting 4 l/min [bar]	50	150	250



**DIRECT ACTING RELIEF VALVE WITH HARDENED SEALING BODY**

- Flow ..... **40 l/min**
- Max working pressure..... **410 bar**
- Seals ..... **NBR and PTFE**
- Cartridge tightening torque ..... **.60 Nm**
- Weight ..... **0,23 Kg**
- Tamper proof cap..... **cod. 9021030190**
- Cavity ..... **C232000** page 212



**Note**

*Hardened body cartridge, suggested for heavy duty applications (HD) and for lifting equipment.*

*For lifting equipments, cleanliness class ISO 4406 17/14 (NAS 1653 class 8) or better is recommended.*

*This cartridge must be installed into the SAE 10/2 long cavity, according the specifications of C232000.*

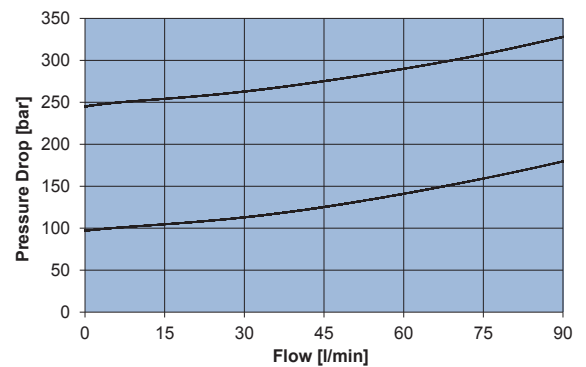
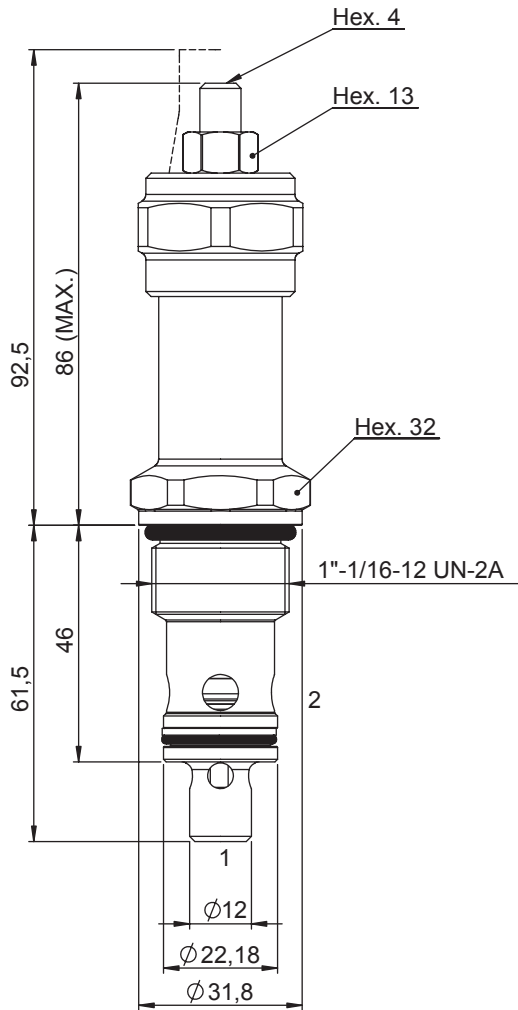
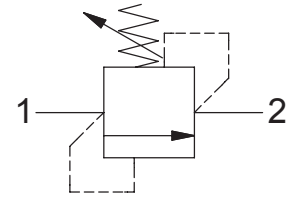
**Ordering code**

**0 0 2 3 4**    **0 0 0 0**

SPRINGS	1	2	3
Setting range min.-max. [bar]	40 - 140	120 - 250	220 - 410
Pressure Increase [bar/by turn]	23	31	53
Standard setting 4 l/min [bar]	50	150	250

**DIRECT ACTING RELIEF VALVE**

- Flow ..... **90 l/min**
- Max working pressure ..... **350 bar**
- Seals ..... **NBR and PTFE**
- Cartridge tightening torque ..... **90 Nm**
- Weight ..... **0,35 Kg**
- Tamper proof cap ..... **cod. 9021020250**
- Cavity ..... **C240000** page 213
- Body ..... **171402** page 196



**Note**  
Axial hole of the C240000 cavity: minimum Ø19mm.

**Ordering code**

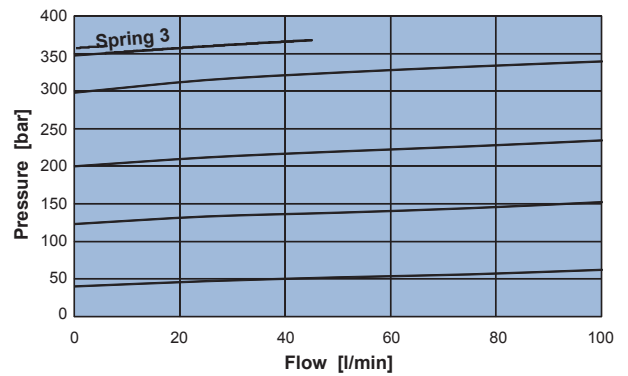
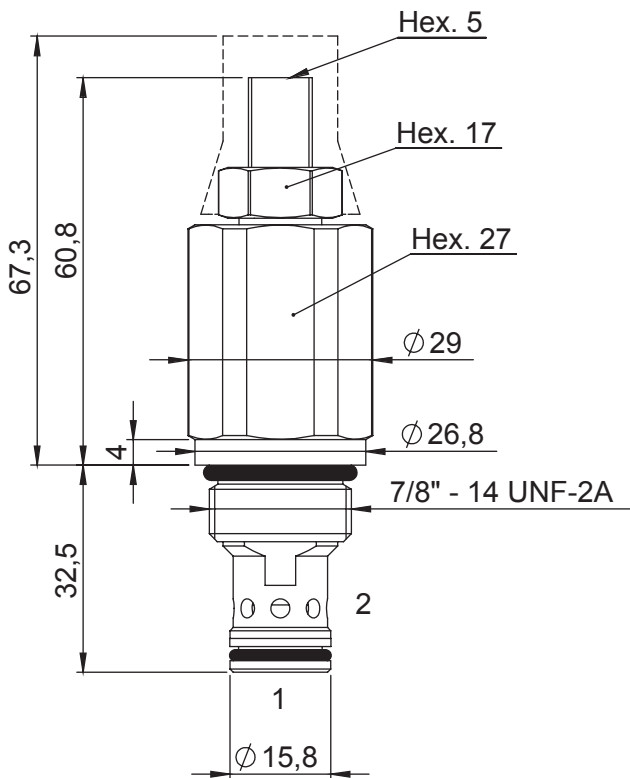
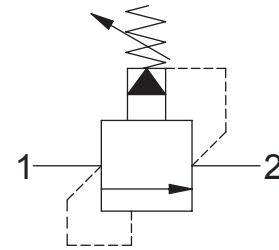
**0 0 2 4 0**   **0 0 0 0**

SPRINGS	2	3
Setting range min.-max. [bar]	60 - 250	200 - 350
Pressure Increase [bar/by turn]	22	56
Standard setting 4 l/min [bar]	100	300



**PILOT OPERATED RELIEF VALVE**

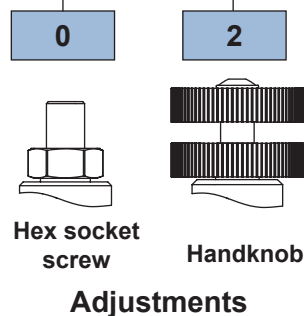
- Flow ..... **100 l/min**
- Max working pressure..... **350 bar**
- Seals ..... **NBR and PTFE**
- Cartridge tightening torque ..... **.60 Nm**
- Weight ..... **0,25 Kg**
- Tamper proof cap..... **cod. 4029250280**
- Cavity ..... **C230000** page 210
- Body..... **171302** page 191



**Ordering code**

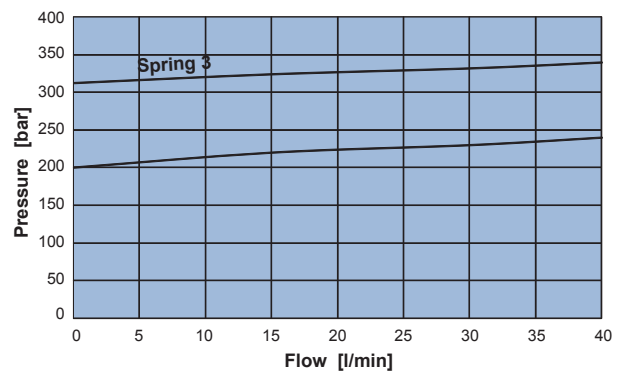
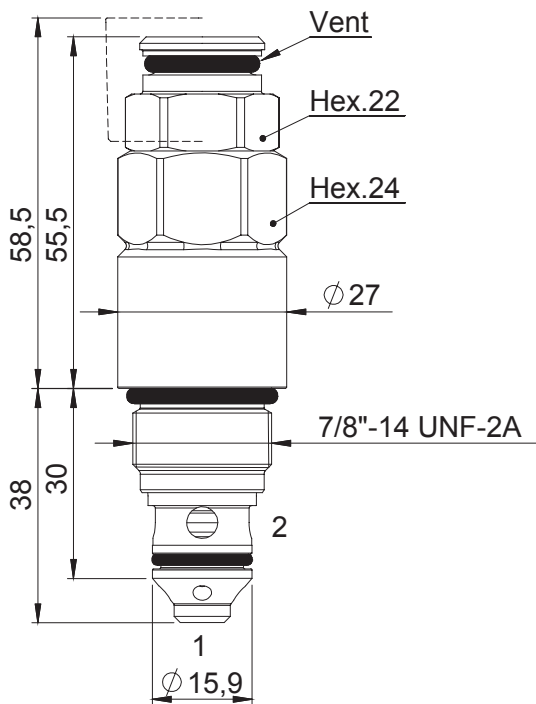
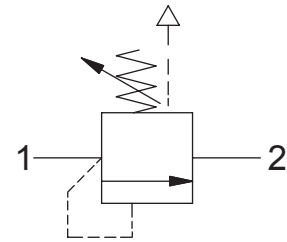
0 0 3 3 0    0    0 0

SPRINGS	3
Setting range min.-max. [bar]	20 - 350
Pressure Increase [bar/by turn]	136
Standard setting 4 l/min [bar]	100



**DIRECT ACTING COMPENSATED RELIEF VALVE WITH HARDENED SEALING BODY**

- Flow ..... **40 l/min**
- Max working pressure ..... **410 bar**
- Seals ..... **NBR and PTFE**
- Cartridge tightening torque ..... **60 Nm**
- Weight ..... **0,23 Kg**
- Tamper proof cap ..... **cod. 9021030190**
- Cavity ..... **C232000** page 212



**Note:**  
*Hardened body cartridge, suggested for heavy duty applications (HD) and for lifting equipment.*

*For lifting equipments, cleanliness class ISO 4406 17/14 (NAS 1653 class 8) or better is recommended.*

*This cartridge must be installed into the SAE 10/2 long cavity, according the specifications of C232000.*

**Ordering code**

**0 0 2 3 5**    **0 0 0 0**

SPRINGS	2	3
Setting range min.-max. [bar]	120 - 250	220 - 410
Pressure Increase [bar/by turn]	31	53
Standard setting 4 l/min [bar]	150	250

