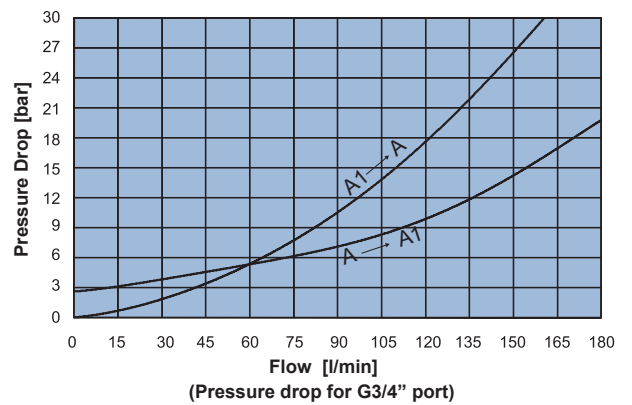
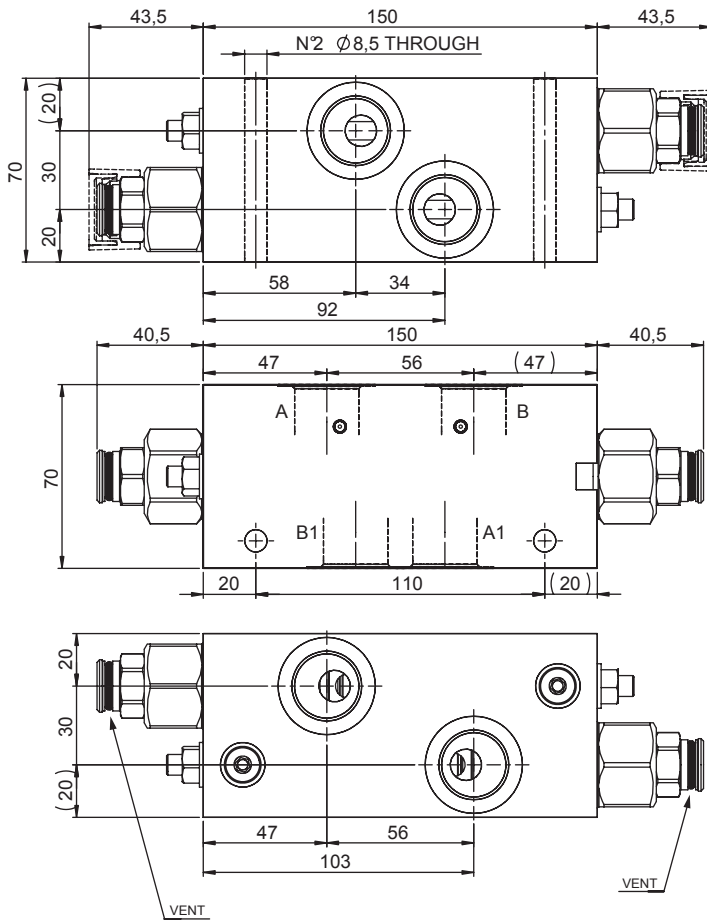
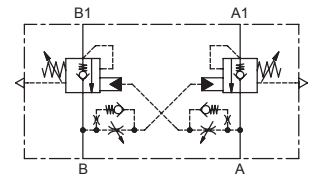
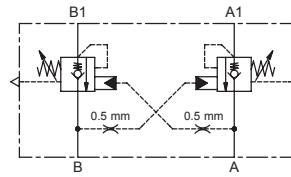


DOUBLE ACTING FULLY COMPENSATED COUNTERBALANCE VALVE

- Flow..... **180 l/min**
- Max working pressure..... **410 bar**
- Compensation..... **Fully Compensated**
- Weight..... **5,3 Kg**
- Tamper proof cap..... **cod.9021030190**

SCHEME 40 - 80

SCHEME 42 - 82



Note:

- Pressure setting must be 30% higher than pressure induced by the load.

-To be used only with A/B closed center spools.

Ordering code

H 1 5 3 0 C **S** **0 0**

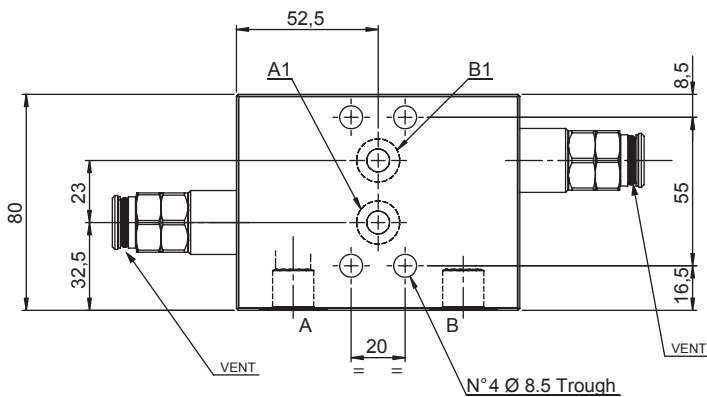
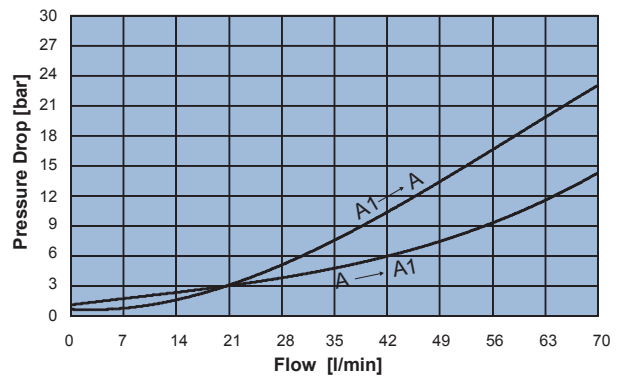
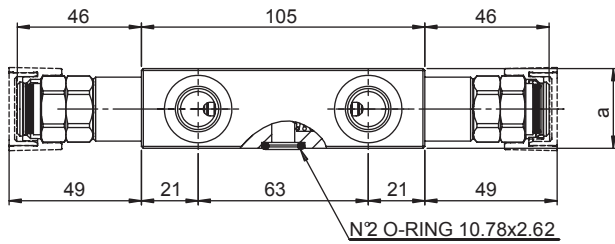
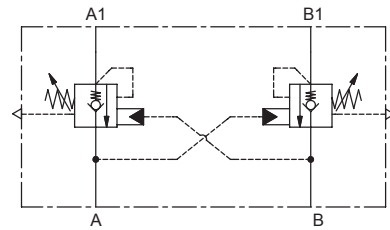
PILOT RATIO	
40	4:1
42	4:1 ADJUSTABLE DUMP SCREW
80	8:1
82	8:1 ADJUSTABLE DUMP SCREW

SPRINGS	rp 4:1		rp 8:1
	2	4	4
Setting range min.-max. [bar]	80 - 210	80 - 410	140 - 410
Pressure Increase [bar/turn]	40	72	72
Standard setting 4 l/min [bar]	200	350	350

PORTS	05
A,A1,B,B1	G 3/4"

DOUBLE ACTING FULLY COMPENSATED COUNTERBALANCE VALVE - A1/B1 FLANGED 20x55

- Flow..... **70 l/min**
- Max working pressure..... **350 bar**
- Compensation..... **Fully Compensated**
- Weight G 3/8"..... **1,9 Kg**
- Weight G 1/2"..... **2,2 Kg**
- Tamper proof cap..... **cod. 9021030190**



Note:
 - Pressure setting must be 30% higher than pressure induced by the load.
 - To be used only with A/B closed center spools.

	a
03	29.5
04	34.5

Ordering code

H 5 0 3 2 C **S** **0 0**

PILOT RATIO	
40	4:1

SPRINGS	2	3
Setting range min.-max. [bar]	60 - 210	120 - 350
Pressure Increase [bar/turn]	62	114
Standard setting 4 l/min [bar]	200	350

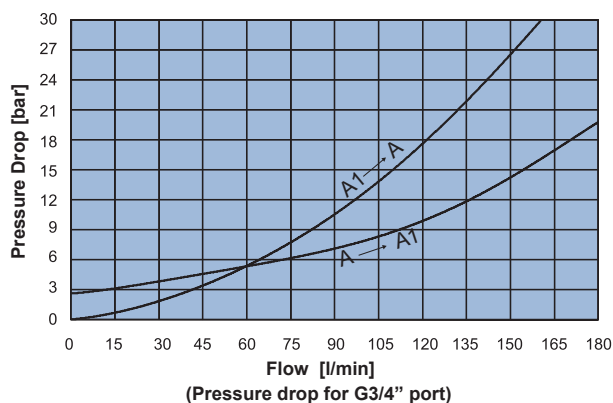
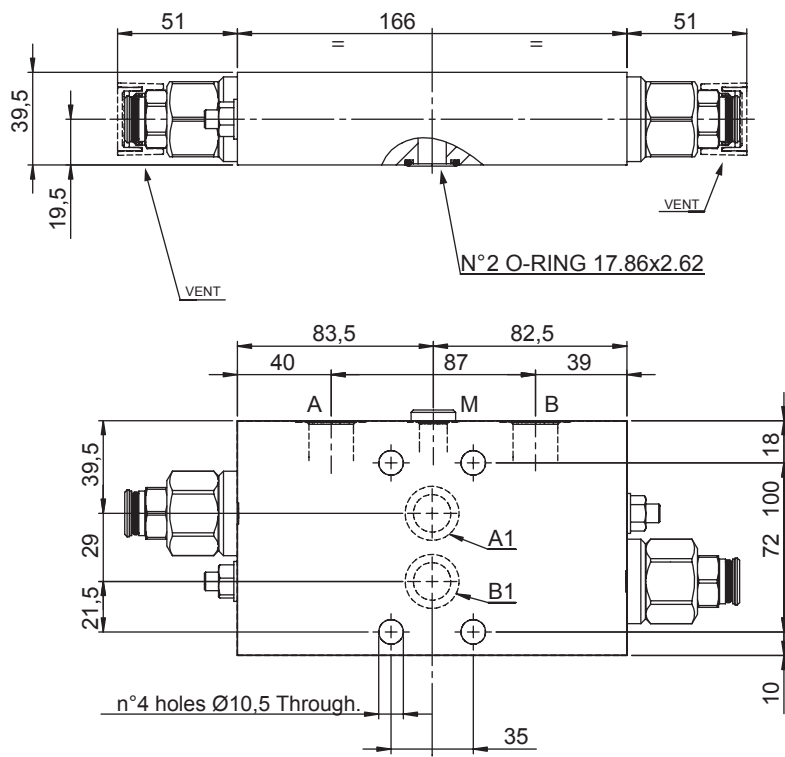
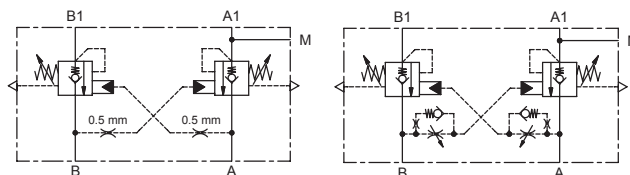
PORTS	03	04
A,B	G 3/8"	G 1/2"
A1,B1	Ø 8.5	Ø 8.5

DOUBLE ACTING FULLY COMPENSATED COUNTERBALANCE VALVE - A1/B1 FLANGED 35x72

- Flow..... **180 l/min**
- Max working pressure..... **410 bar**
- Compensation..... **Fully Compensated**
- Weight G 1/2"..... **5,1 Kg**
- Weight G 3/4"..... **5,1 Kg**
- Tamper proof cap..... **cod.9021030190**

SCHEME 40 - 80

SCHEME 42 - 82



Note:
 - Pressure setting must be 30% higher than pressure induced by the load.
 - To be used only with A/B closed center spools.

Ordering code

H 1 5 3 2 C **S** **0 0**

PILOT RATIO	
40	4:1
42	4:1 <small>ADJUSTABLE DUMP SCREW</small>
80	8:1
82	8:1 <small>ADJUSTABLE DUMP SCREW</small>

SPRINGS	rp 4:1		rp 8:1
	2	4	4
Setting range min.-max. [bar]	80 - 210	80 - 410	140 - 410
Pressure Increase [bar/turn]	40	72	72
Standard setting 4 l/min [bar]	200	350	350

PORTS	04	05
	A,B	G 1/2"
M	G 1/4"	G 1/4"
A1,A2	Ø 12	Ø 12

