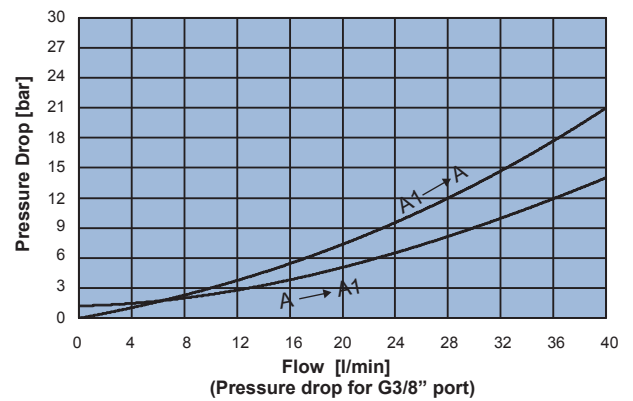
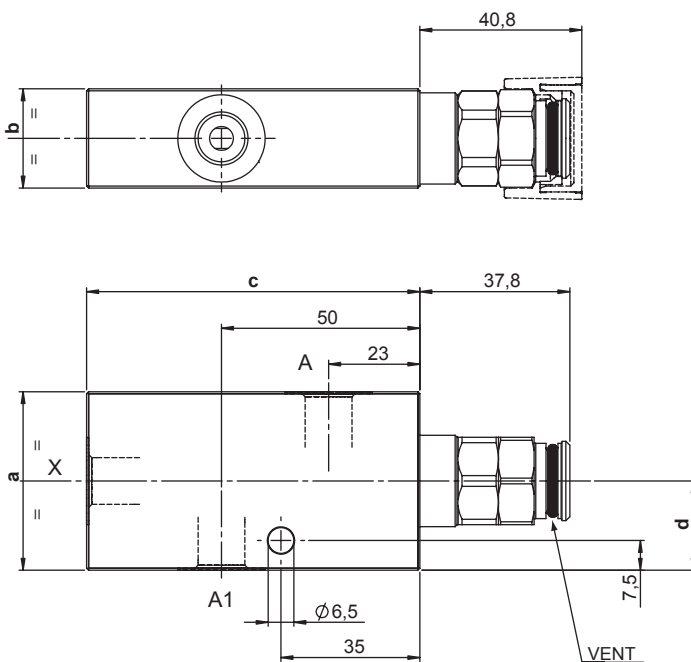
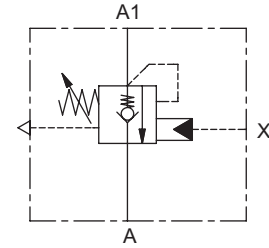


SINGLE ACTING FULLY COMPENSATED COUNTERBALANCE VALVE

- Flow **40 l/min**
- Max working pressure **350 bar**
- Compensation **Fully Compensated**
- Weight G 1/4" **0,75 Kg**
- Weight G 3/8" **1 Kg**
- Tamper proof cap **cod. 9021030190**



Note:
 - Pressure setting must be 30% higher than pressure induced by the load.
 - To be used only with A/B closed center spools.

	a	b	c	d
02	45	25	84	22,5
03	50	30	90	25

Ordering code

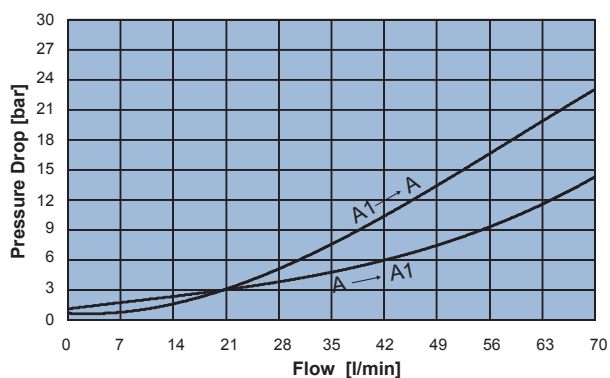
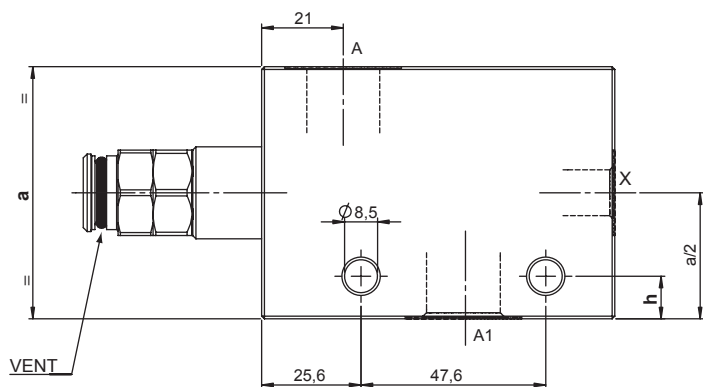
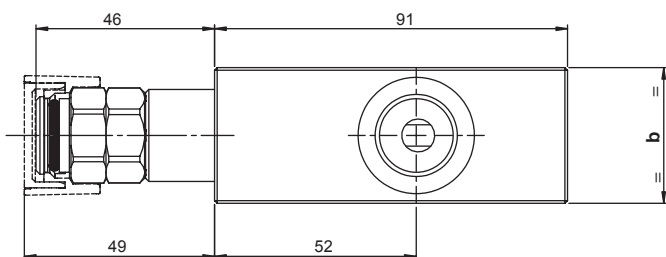
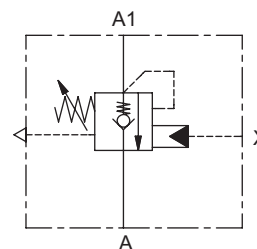
H 3 0 0 1 C **S** **0 0**

PILOT RATIO		SPRINGS		PORTS	
40	4:1	2	3	02	03
		Setting range min.-max. [bar]	80 - 210 / 150 - 350	A,A1,X	G 1/4" / G 3/8"
		Pressure Increase [bar/turn]	41 / 100		
		Standard setting 4 l/min [bar]	200 / 350		



SINGLE ACTING FULLY COMPENSATED COUNTERBALANCE VALVE

- Flow **70 l/min**
- Max working pressure **350 bar**
- Compensation **Fully Compensated**
- Weight G 3/8" **1,25 Kg**
- Weight G 1/2" **1,55 Kg**
- Tamper proof cap **cod. 9021030190**



Note:
 - Pressure setting must be 30% higher than pressure induced by the load.

- To be used only with A/B closed center spools.

	a	b	h
03	55	30	7
04	65	35	11

Ordering code

H 5 0 0 1 C **S** **0 0**

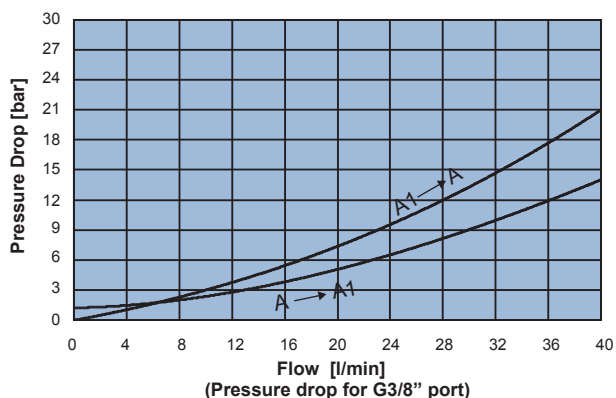
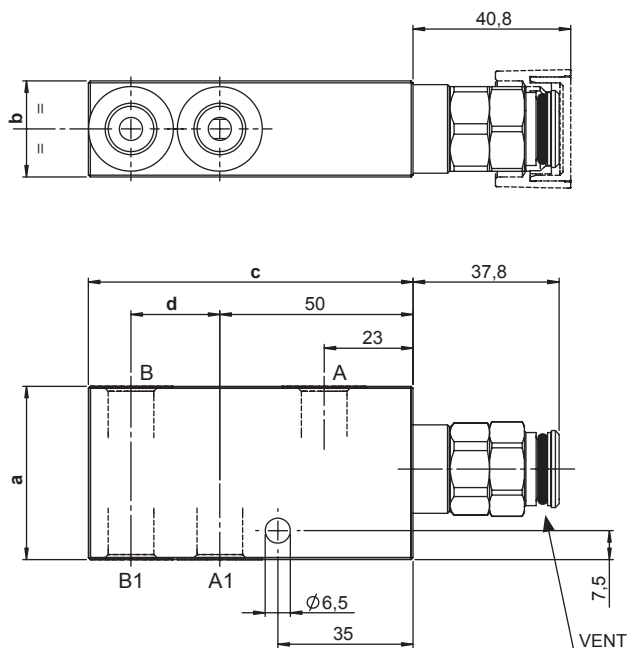
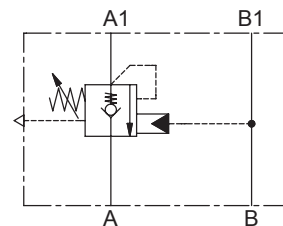
PILOT RATIO	
40	4:1
90	9:1

SPRINGS	rp 4:1		rp 9:1	
	2	3	2	3
Setting range min.-max. [bar]	60 - 210	120 - 350	80 - 250	190 - 350
Pressure Increase [bar/turn]	62	114	50	121
Standard setting 4 l/min [bar]	200	350	200	350

PORTS	03	04
A,A1	G 3/8"	G 1/2"
X	G 1/4"	G 1/4"

SINGLE ACTING FULLY COMPENSATED COUNTERBALANCE VALVE

- Flow..... **40 l/min**
- Max working pressure..... **350 bar**
- Compensation..... **Fully Compensated**
- Weight G 1/4"..... **0,75 Kg**
- Weight G 3/8"..... **1 Kg**
- Tamper proof cap..... **cod.9021030190**



Note:
 - Pressure setting must be 30% higher than pressure induced by the load.
 - To be used only with A/B closed center spools.

	a	b	c	d
02	45	25	84	23
03	50	30	95	30

Ordering code

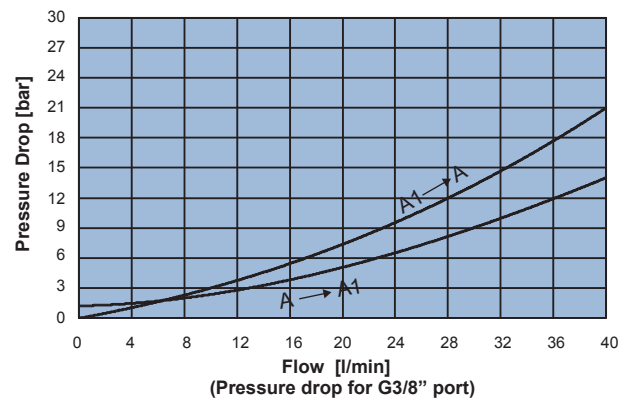
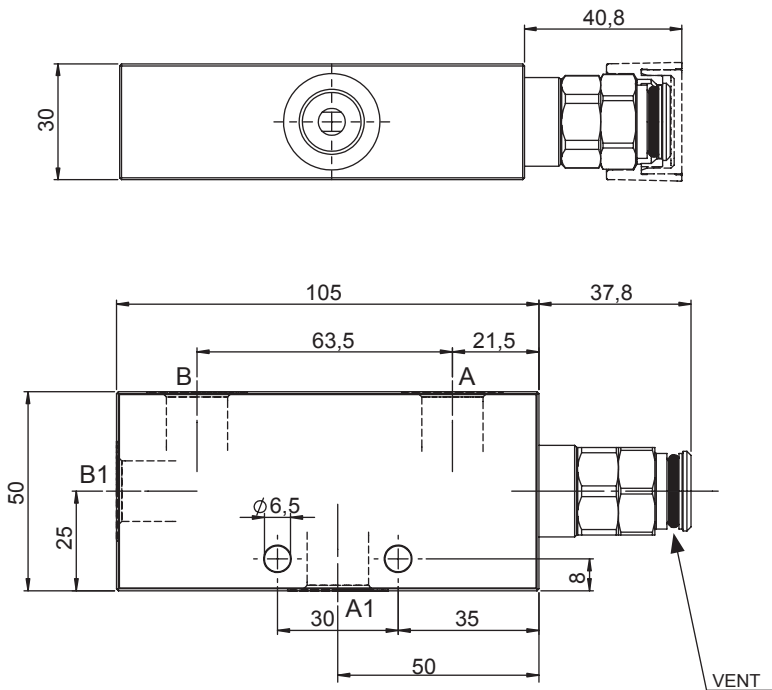
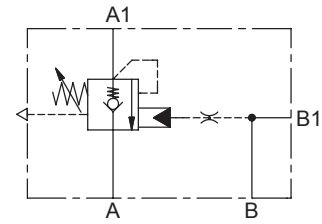
H 3 0 0 4 C **S** **0 0**

PILOT RATIO		SPRINGS		PORTS	
40	4:1	2	3	02	03
		Setting range min.-max. [bar]	80 - 210 150 - 350	A,B,A1,B1	G 1/4" G 3/8"
		Pressure Increase [bar/turn]	41 100		
		Standard setting 4 l/min [bar]	200 350		



SINGLE ACTING FULLY COMPENSATED COUNTERBALANCE VALVE

- Flow. **40 l/min**
- Max working pressure. **350 bar**
- Compensation. **Fully Compensated**
- Weight. **0,75 Kg**
- Tamper proof cap. **cod.9021030190**



Note:
 - Pressure setting must be 30% higher than pressure induced by the load.
 - To be used only with A/B closed center spools.

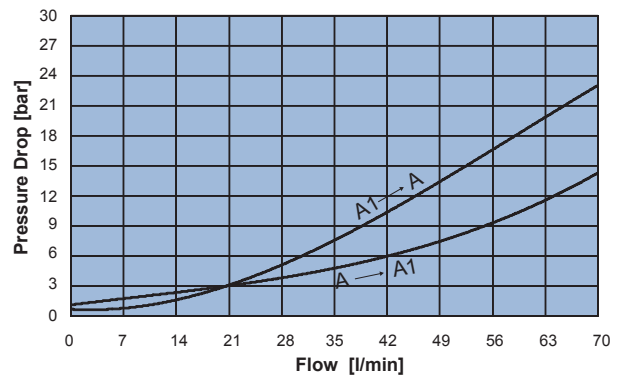
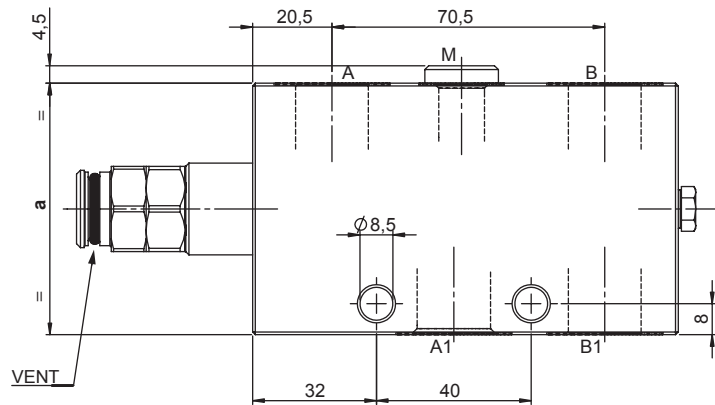
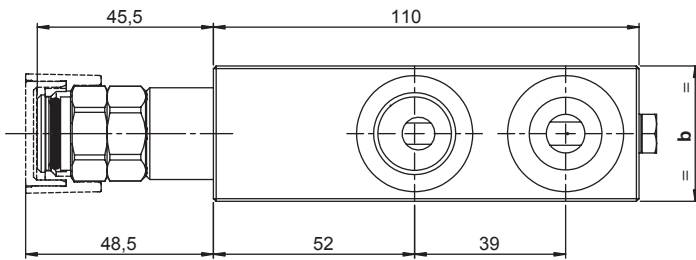
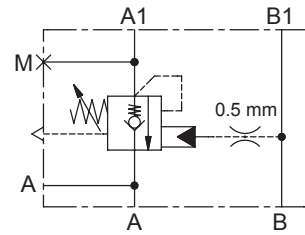
Ordering code

H 3 0 0 4 C **S** **0 0**

PILOT RATIO		SPRINGS		PORTS	
41	4:1+dia.0,5mm	2	3	03	G 3/8"
		Setting range min.-max. [bar]	80 - 210	150 - 350	
		Pressure Increase [bar/turn]	41	100	
		Standard setting 4 l/min [bar]	200	350	

SINGLE ACTING FULLY COMPENSATED COUNTERBALANCE VALVE

- Flow..... **70 l/min**
- Max working pressure..... **350 bar**
- Compensation..... **Fully Compensated**
- Weight G 3/8"..... **1,35 Kg**
- Weight G 1/2"..... **1,8 Kg**
- Tamper proof cap..... **cod. 9021030190**



Note:
 - Pressure setting must be 30% higher than pressure induced by the load.
 - To be used only with A/B closed center spools.

	a	b
03	55	30
04	65	35

Ordering code

H 5 0 0 4 C **S** **0 0**

PILOT RATIO	
40	4:1

SPRINGS	2	3
Setting range min.-max. [bar]	60 - 210	120 - 350
Pressure Increase [bar/turn]	62	114
Standard setting 4 l/min [bar]	200	350

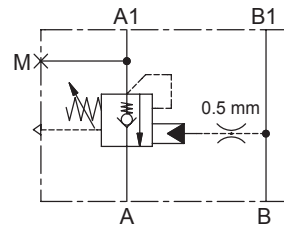
PORTS	03	04
A,A1,B,B1	G 3/8"	G 1/2"
M	G 1/4"	G 1/4"



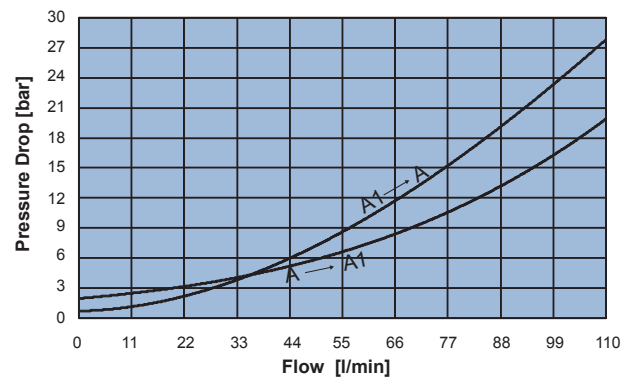
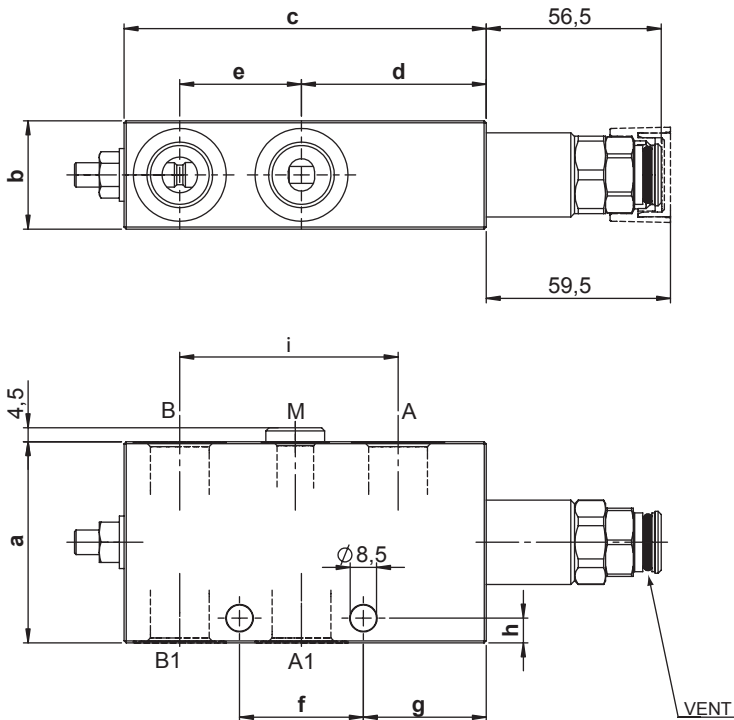
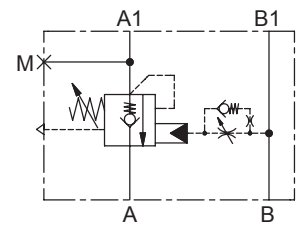
SINGLE ACTING FULLY COMPENSATED COUNTERBALANCE VALVE

- Flow..... **110 l/min**
- Max working pressure..... **410 bar**
- Compensation..... **Fully Compensated**
- Weight G 1/2"..... **2 Kg**
- Weight G 3/4"..... **2,6 Kg**
- Tamper proof cap..... **cod.9021030190**

SCHEME 40 - 90



SCHEME 42 - 92



Note:
 - Pressure setting must be 30% higher than pressure induced by the load.
 - To be used only with A/B closed center spools.

	a	b	c	d	e	f	g	h	i
04	65	35	117	59,7	39.3	40	39,7	8	70.5
05	70	40	130	60	47	47.6	36	11	78

Ordering code

H 1 0 0 4 C **S** **0 0**

PILOT RATIO	
40	4:1
42	4:1 ADJUSTABLE DUMP SCREW
90	9:1
92	9:1 ADJUSTABLE DUMP SCREW

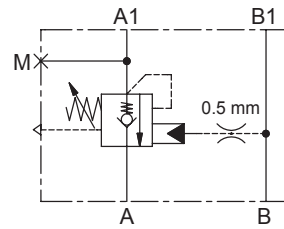
SPRINGS	rp 4:1		rp 9:1
	2	4	4
Setting range min.-max. [bar]	60 - 210	120 - 410	150 - 410
Pressure Increase [bar/turn]	52	85	100
Standard setting 4 l/min [bar]	200	350	350

PORTS	04	05
A,A1,B,B1	G 1/2"	G 3/4"
M	G 1/4"	G 1/4"

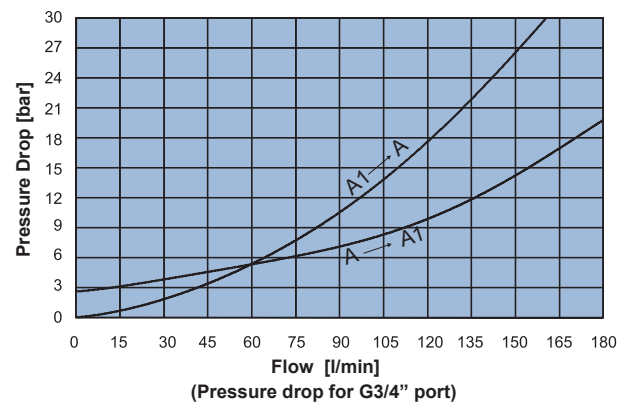
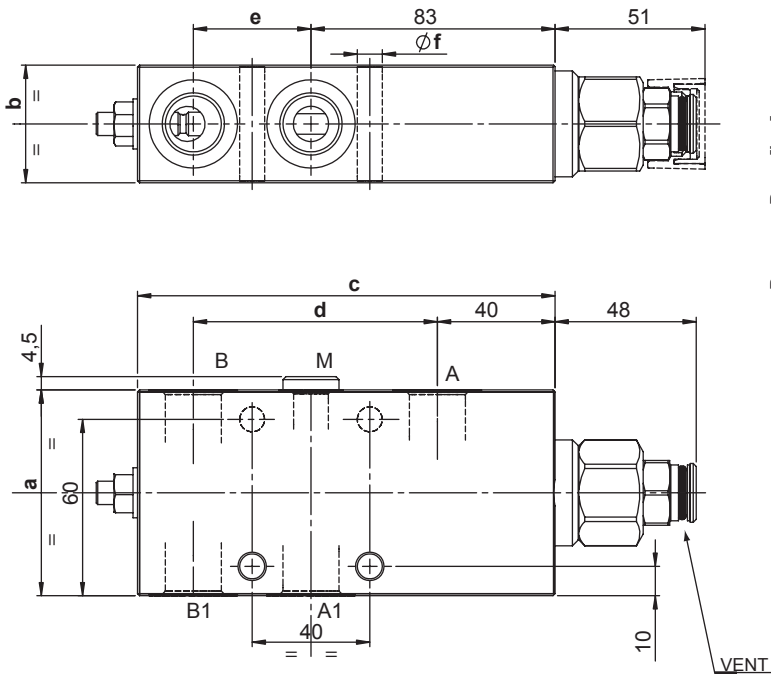
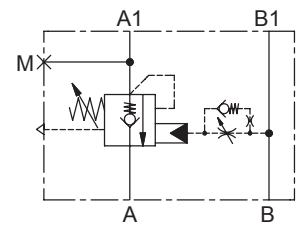
SINGLE ACTING FULLY COMPENSATED COUNTERBALANCE VALVE

- Flow..... **180 l/min**
- Max working pressure..... **410 bar**
- Compensation..... **Fully Compensated**
- Weight G 1/2"..... **3 Kg**
- Weight G 3/4"..... **3,4 Kg**
- Tamper proof cap..... **cod.9021030190**

SCHEME 40 - 80



SCHEME 42 - 82



Note:
 - Pressure setting must be 30% higher than pressure induced by the load.
 - To be used only with A/B closed center spools.

	a	b	c	d	e	f
04	70	40	142	83	40	8,5
05	80	40	147	86	43	10,5

Ordering code

H 1 5 0 4 C **S** **0 0**

PILOT RATIO	
40	4:1
42	4:1 ADJUSTABLE DUMP SCREW
80	8:1
82	8:1 ADJUSTABLE DUMP SCREW

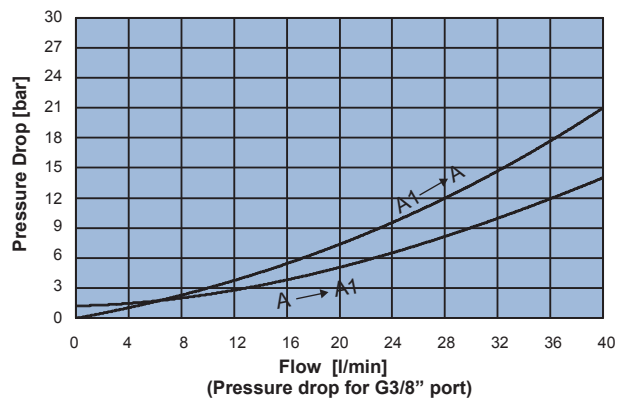
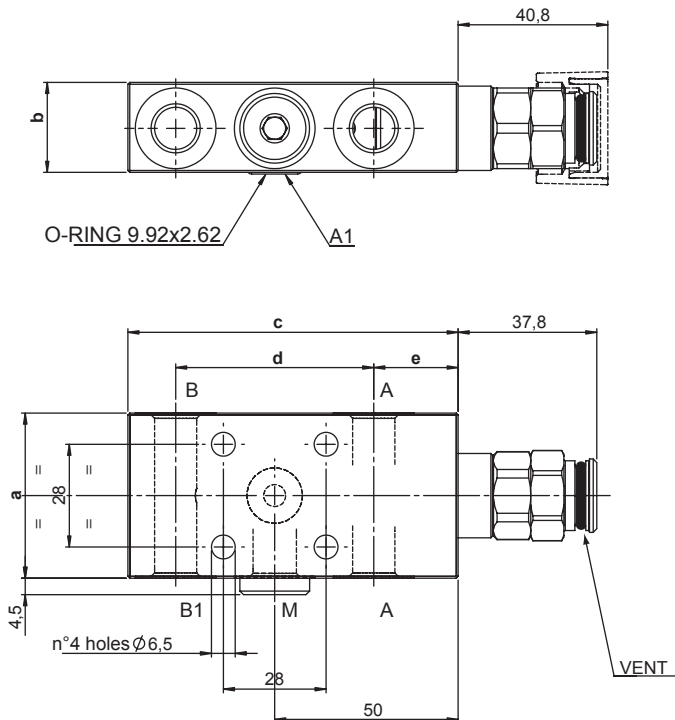
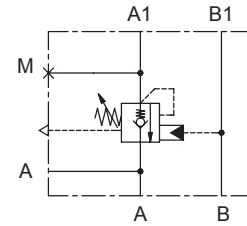
SPRINGS	rp 4:1		rp 8:1
	2	4	4
Setting range min.-max. [bar]	80 - 210	80 - 410	140 - 410
Pressure Increase [bar/turn]	40	72	72
Standard setting 4 l/min [bar]	200	350	350

PORTS	04	05
A,A1,B,B1	G 1/2"	G 3/4"
M	G 1/4"	G 1/4"



SINGLE ACTING FULLY COMPENSATED COUNTERBALANCE VALVE - A1 FLANGED 28x28

- Flow..... **40 l/min**
- Max working pressure..... **350 bar**
- Compensation..... **Fully Compensated**
- Weight G 1/4"..... **0,75 Kg**
- Weight G 3/8"..... **0,9 Kg**
- Tamper proof cap..... **cod.9021030190**



Note:
 - Pressure setting must be 30% higher than pressure induced by the load.
 - To be used only with A/B closed center spools.

	a	b	c	d	e
02	45	24,5	90	54	23
03	50	29,5	95	59	21

Ordering code

H 3 0 0 5 C **S** **0 0**

PILOT RATIO	
40	4:1

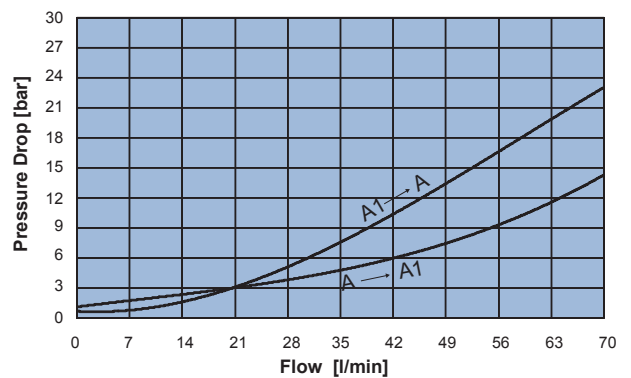
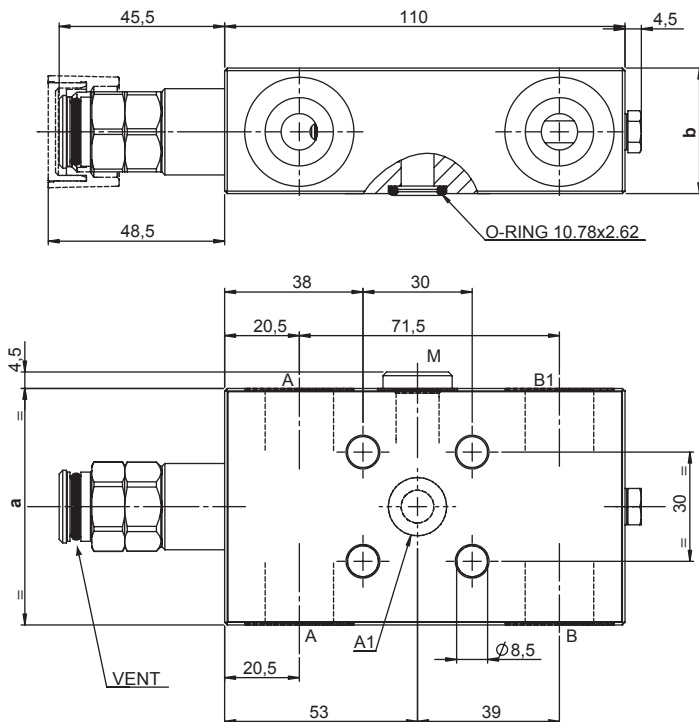
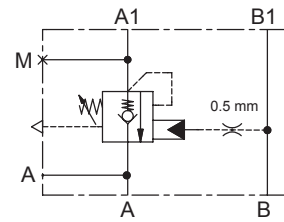
SPRINGS	2	3
Setting range min.-max. [bar]	80 - 210	150 - 350
Pressure Increase [bar/turn]	41	100
Standard setting 4 l/min [bar]	200	350

PORTS	02	03
A,B,B1	G 1/4"	G 3/8"
A1	Ø 6	Ø 6
M	G 1/4"	G 1/4"



SINGLE ACTING FULLY COMPENSATED COUNTERBALANCE VALVE - A1 FLANGED 30x30

- Flow..... **70 l/min**
- Max working pressure..... **350 bar**
- Compensation..... **Fully Compensated**
- Weight G 3/8"..... **1,3 Kg**
- Weight G 1/2"..... **1,75 Kg**
- Tamper proof cap..... **cod.9021030190**



Note:
 - Pressure setting must be 30% higher than pressure induced by the load.
 - To be used only with A/B closed center spools.

	a	b
03	55	29,5
04	65	34,5

Ordering code

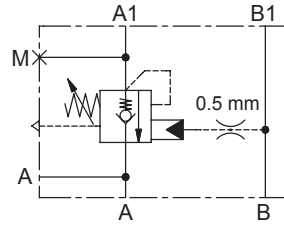
H 5 0 0 5 C **S** **0 0**

PILOT RATIO		SPRINGS		PORTS	
40	4:1	2	3	03	04
		Setting range min.-max. [bar]	60 - 210 120 - 350	A,B,B1	G 3/8" G 1/2"
		Pressure Increase [bar/turn]	62 114	A1	Ø 9 Ø 9
		Standard setting 4 l/min [bar]	200 350	M	G 1/4" G 1/4"

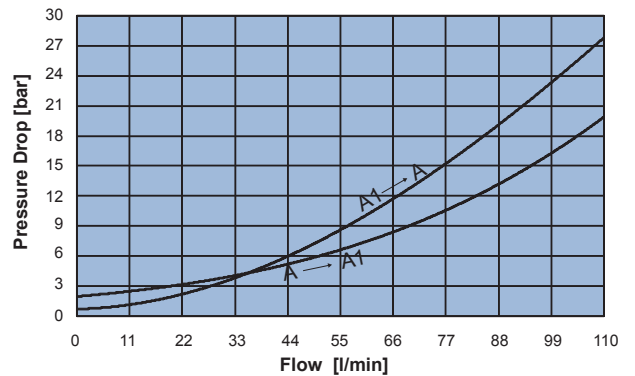
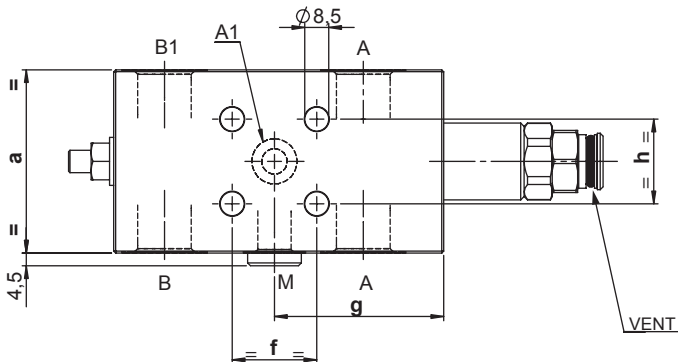
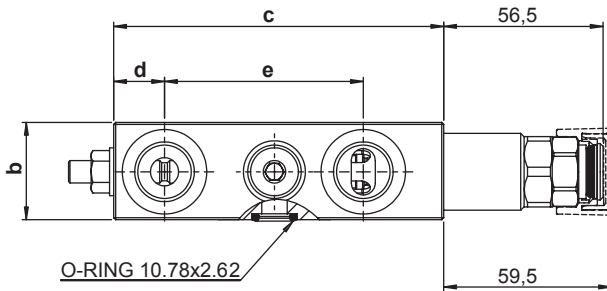
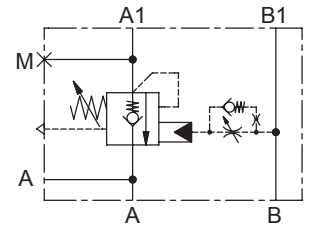
SINGLE ACTING FULLY COMPENSATED COUNTERBALANCE VALVE - A1 FLANGED f_{xh}

- Flow **110 l/min**
- Max working pressure **410 bar**
- Compensation **Fully Compensated**
- Weight G 1/2" **1,9 Kg**
- Weight G 3/4" **2,85 Kg**
- Tamper proof cap **cod. 9021030190**

SCHEME 40 - 90



SCHEME 42 - 92



Note:
 - Pressure setting must be 30% higher than pressure induced by the load.
 - To be used only with A/B closed center spools.

	a	b	c	d	e	f	g	h
04	65	34,5	117	26,5	72,5	30	45	30
05	80	39,5	130	22	86	40	62	40

Ordering code

H 1 0 0 5 C **S** **0 0**

PILOT RATIO	
40	4:1
42	4:1 ADJUSTABLE DUMP SCREW
90	9:1
92	9:1 ADJUSTABLE DUMP SCREW

SPRINGS	rp 4:1		rp 9:1
	2	4	4
Setting range min.-max. [bar]	60 - 210	120 - 410	150 - 410
Pressure Increase [bar/turn]	52	85	100
Standard setting 4 l/min [bar]	200	350	350

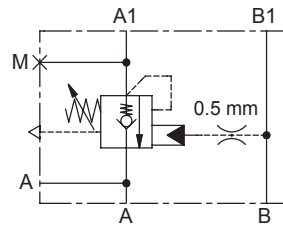
PORTS	04	05
A,B,B1	G 1/2"	G 3/4"
A1	Ø 9	Ø 8,5
M	G 1/4"	G 1/4"



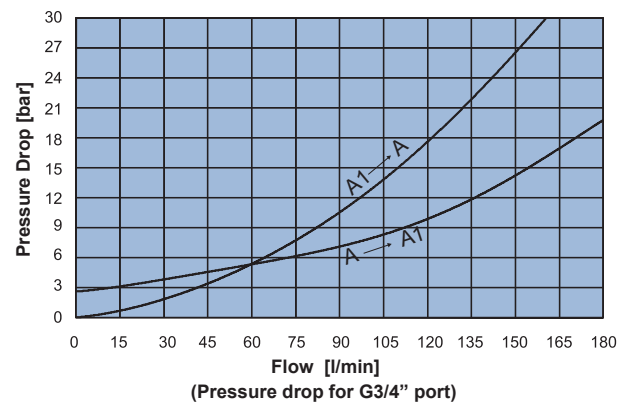
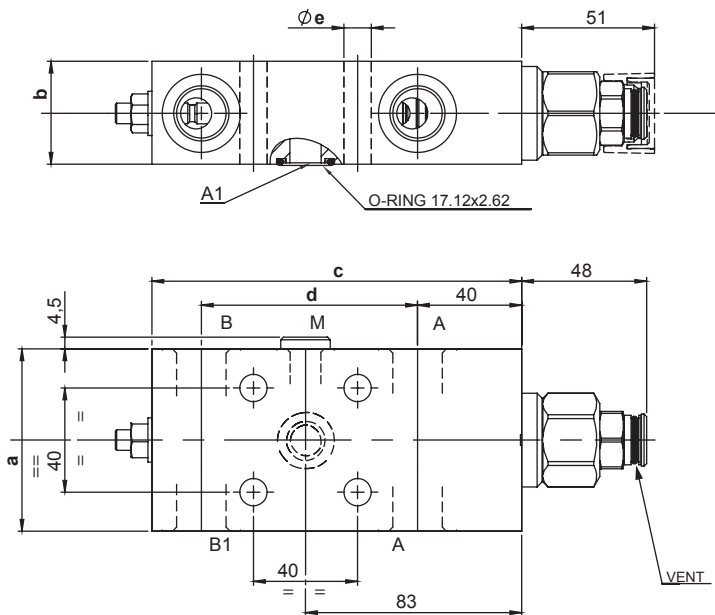
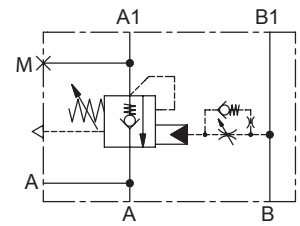
SINGLE ACTING FULLY COMPENSATED COUNTERBALANCE VALVE - A1 FLANGED 40x40

- Flow..... **180 l/min**
- Max working pressure..... **410 bar**
- Compensation..... **Fully Compensated**
- Weight G 1/2"..... **2,9 Kg**
- Weight G 3/4"..... **3,3 Kg**
- Tamper proof cap..... **cod. 9021030190**

SCHEME 40 - 80



SCHEME 42 - 82



Note:
- Pressure setting must be 30% higher than pressure induced by the load.

-To be used only with A/B closed center spools.

	a	b	c	d	e
04	70	39,5	142	83	10,5
05	80	39,5	147	86	10,5

Ordering code

H 1 5 0 5 C **S** **0 0**

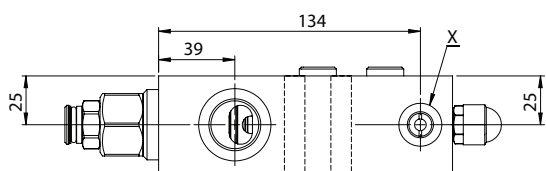
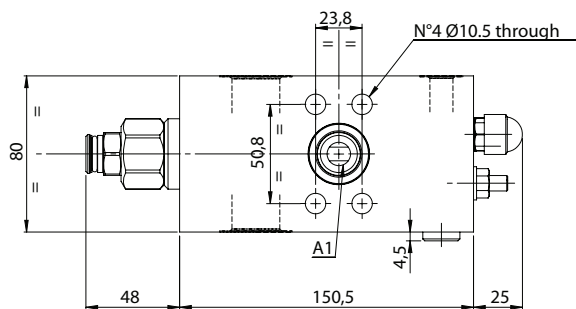
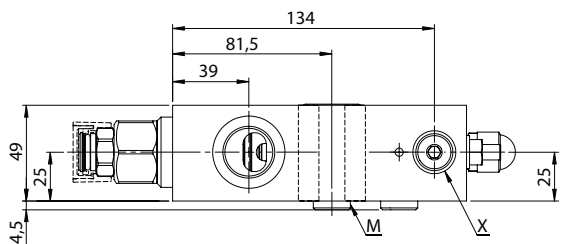
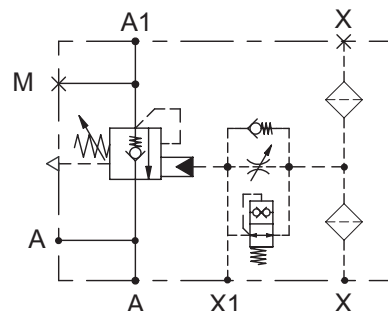
PILOT RATIO	
40	4:1
42	4:1 ADJUSTABLE DUMP SCREW
80	8:1
82	8:1 ADJUSTABLE DUMP SCREW

SPRINGS	rp 4:1		rp 8:1
	2	4	4
Setting range min.-max. [bar]	80 - 210	80 - 410	140 - 410
Pressure Increase [bar/turn]	40	72	72
Standard setting 4 l/min [bar]	200	350	350

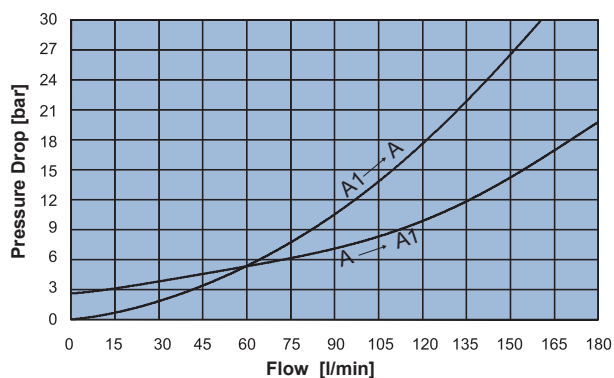
PORTS	04	05
A,B,B1	G 1/2"	G 3/4"
M	G 1/4"	G 1/4"
A1	Ø 12	Ø 12

SINGLE ACTING FULLY COMPENSATED COUNTERBALANCE VALVE - A1 FLANGED

- Flow **180 l/min**
- Max working pressure **410 bar**
- Compensation **Fully Compensated**
- Weight **4,4 Kg**
- Tamper proof cap **cod. 9021030190**



OR 4093 23.39x3.53 NBR 70° SH



Note:

- Pressure setting must be 30% higher than pressure induced by the load.
- To be used only with A/B closed center spools.
- Pilot ratio 4:1 is available upon request.
- Damped pilot signal with by-pass to ensure stability and fast response time regarding oil viscosity.

PATENTED

Ordering code

H 1 5 0 2 C **S** **0 0**

PILOT RATIO	
85	8:1

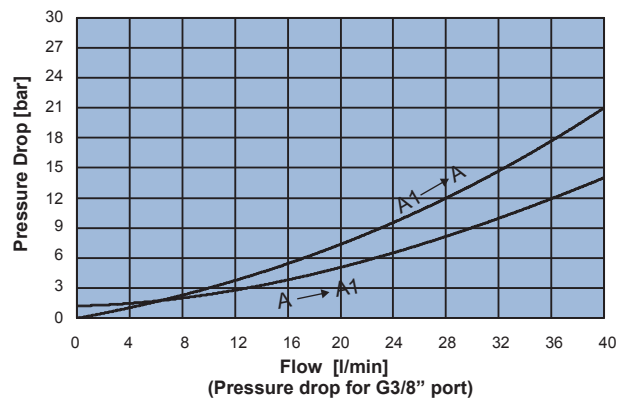
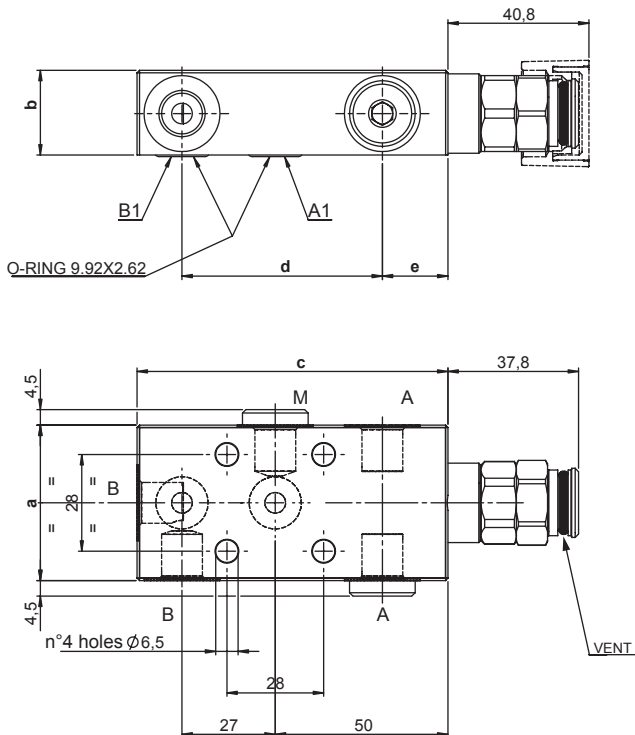
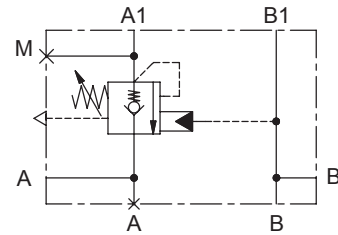
SPRINGS	4
Setting range min.-max. [bar]	140 - 410
Pressure Increase [bar/turn]	72
Standard setting 4 l/min [bar]	350

PORTS	65
A	G 3/4"
A1	3/4" SAE 6000
X	G 1/4"



SINGLE ACTING FULLY COMPENSATED COUNTERBALANCE VALVE - A1/B1 FLANGED 28x28

- Flow..... **40 l/min**
- Max working pressure..... **350 bar**
- Compensation..... **Fully Compensated**
- Weight G 1/4"..... **0,8 Kg**
- Weight G 3/8"..... **1 Kg**
- Tamper proof cap..... **cod. 9021030190**



Note:
 - Pressure setting must be 30% higher than pressure induced by the load.
 - To be used only with A/B closed center spools.

	a	b	c	d	e
02	45	24,5	90	58	19
03	50	29,5	95	59	21

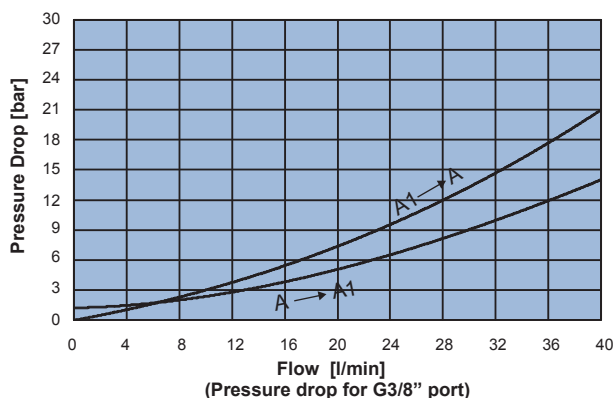
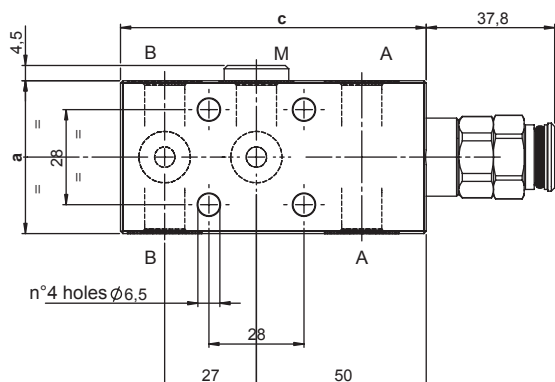
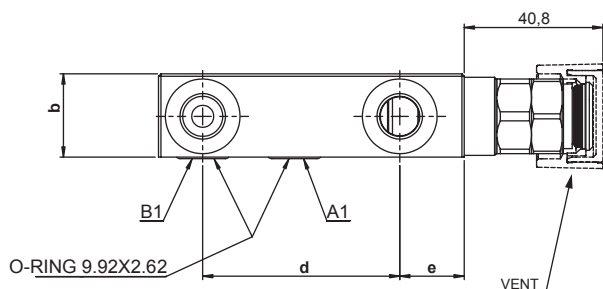
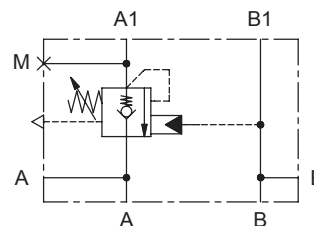
Ordering code

H 3 0 0 6 C **S** **0 0**

PILOT RATIO		SPRINGS		PORTS	
40	4:1	2	3	02	03
		Setting range min.-max. [bar]	80 - 210 150 - 350	A,B	G 1/4" G 3/8"
		Pressure Increase [bar/turn]	41 100	A1,B1	Ø 6 Ø 6
		Standard setting 4 l/min [bar]	200 350	M	G 1/4" G 1/4"

SINGLE ACTING FULLY COMPENSATED COUNTERBALANCE VALVE - A1/B1 FLANGED 28x28

- Flow **40 l/min**
- Max working pressure **350 bar**
- Compensation **Fully Compensated**
- Weight G 1/2" **0,75 Kg**
- Weight G 3/4" **0,9 Kg**
- Tamper proof cap **cod. 9021030190**



Note:
 - Pressure setting must be 30% higher than pressure induced by the load.
 - To be used only with A/B closed center spools.

	a	b	c	d	e
02	45	24,5	90	58	19
03	50	29,5	95	59	21

Ordering code

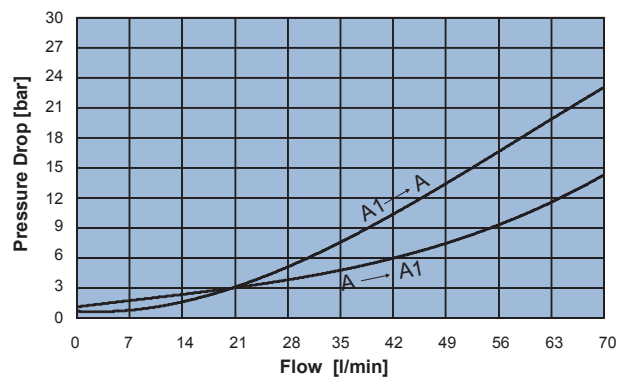
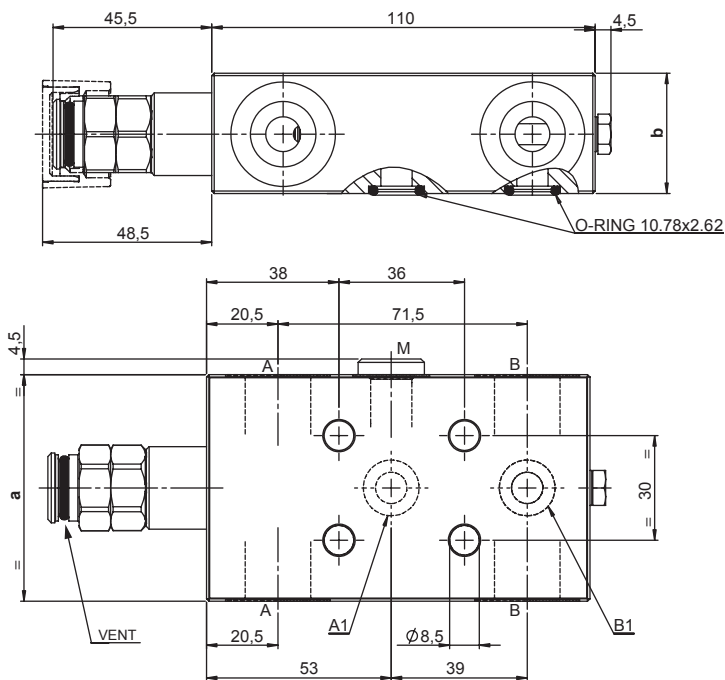
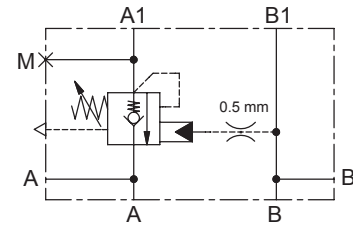
H 3 0 0 8 C **S** **0 0**

PILOT RATIO		SPRINGS			PORTS		
40	4:1	2	3		02	03	
		Setting range min.-max. [bar]	80 - 210	150 - 350	A,B	G 1/4"	G 3/8"
		Pressure Increase [bar/turn]	41	100	A1,B1	Ø 6	Ø 6
		Standard setting 4 l/min [bar]	200	350	M	G 1/4"	G 1/4"



SINGLE ACTING COUNTERBALANCE VALVE FLANGED 30x36

- Flow..... **70 l/min**
- Max working pressure..... **350 bar**
- Compensation..... **Fully Compensated**
- Weight G 3/8"..... **1,5 Kg**
- Weight G 1/2"..... **1,7 Kg**
- Tamper proof cap..... **cod.9021030190**



Note:
 - Pressure setting must be 30% higher than pressure induced by the load.
 - To be used only with A/B closed center spools.

	a	b
03	55	29,5
04	65	34,5

Ordering code

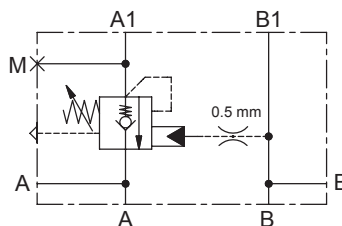
H 5 0 0 6 C **S** **0 0**

PILOT RATIO		SPRINGS		PORTS	
40	4:1	2	3	03	04
		Setting range min.-max. [bar]	60 - 210 120 - 350	A,B	G 3/8" G 1/2"
		Pressure Increase [bar/turn]	62 114	A1,B1	Ø 9 Ø 9
		Standard setting 4 l/min [bar]	200 350	M	G 1/4" G 1/4"

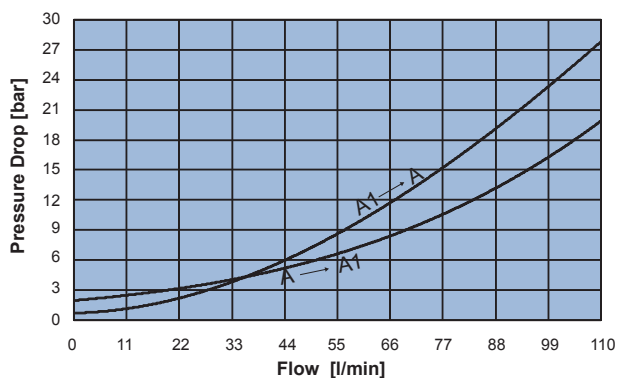
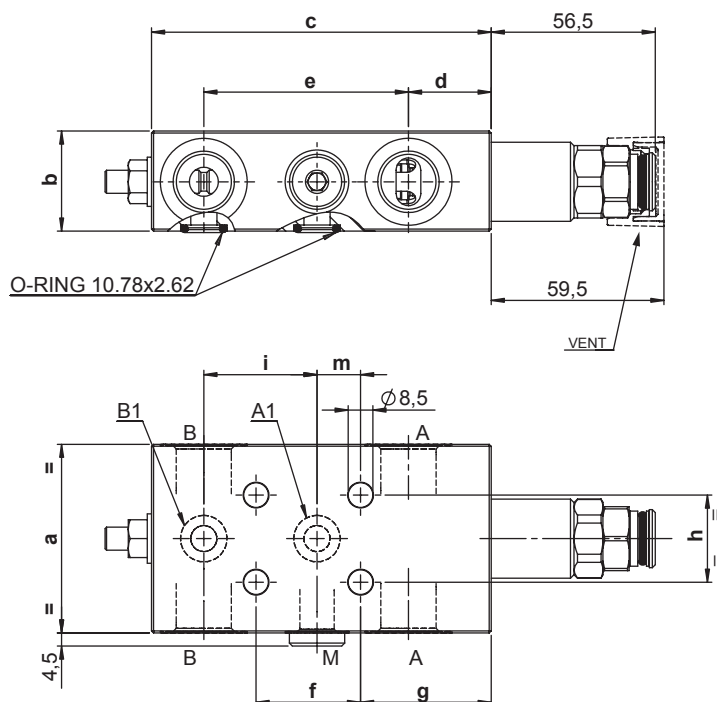
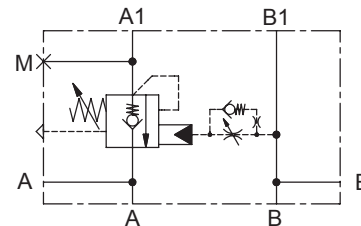
SINGLE ACTING FULLY COMPENSATED COUNTERBALANCE VALVE - A1/B1 FLANGED fxh

- Flow..... **110 l/min**
- Max working pressure..... **410 bar**
- Compensation..... **Fully Compensated**
- Weight G 1/2"..... **1,9 Kg**
- Weight G 3/4"..... **2,2 Kg**
- Tamper proof cap..... **cod.9021030190**

SCHEME 40 - 90



SCHEME 42 - 92



Note:
- Pressure setting must be 30% higher than pressure induced by the load.

-To be used only with A/B closed center spools.

	a	b	c	d	e	f	g	h	i	m
04	65	34,5	117	28,5	70,5	36	45	30	39	15

Ordering code

H 1 0 0 6 C **S** **0 0**

PILOT RATIO	
40	4:1
42	4:1 ADJUSTABLE DUMP SCREW
90	9:1
92	9:1 ADJUSTABLE DUMP SCREW

SPRINGS	rp 4:1		rp 9:1
	2	4	4
Setting range min.-max. [bar]	60 - 210	120 - 410	150 - 410
Pressure Increase [bar/turn]	52	85	100
Standard setting 4 l/min [bar]	200	350	350

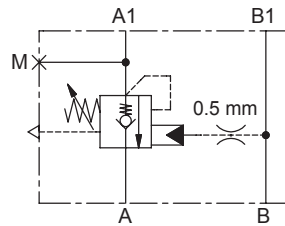
PORTS	04
A,B	G 1/2"
A1,B1	Ø 9
M	G 1/4"



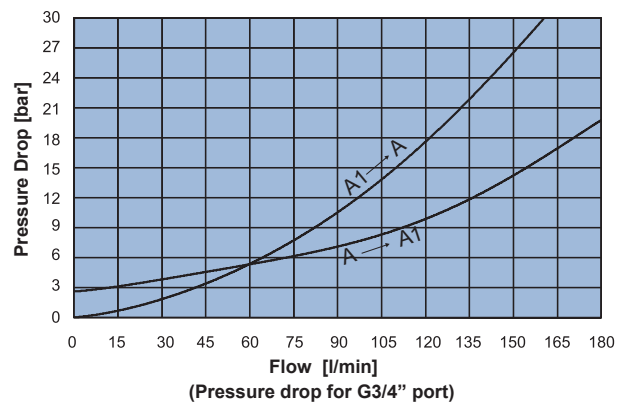
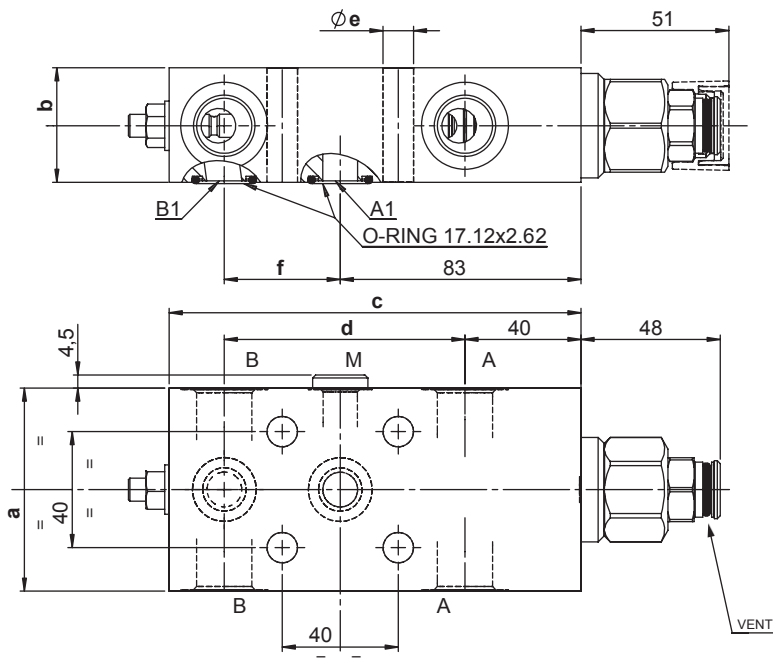
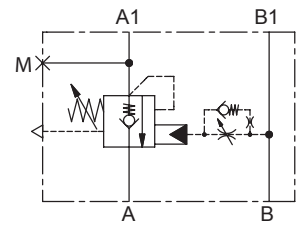
SINGLE ACTING FULLY COMPENSATED COUNTERBALANCE VALVE - A1/B1 FLANGED 40x40

- Flow..... **180 l/min**
- Max working pressure..... **410 bar**
- Compensation..... **Fully Compensated**
- Weight G 1/2"..... **2,9 Kg**
- Weight G 3/4"..... **3,3 Kg**
- Tamper proof cap..... **cod. 9021030190**

SCHEME 40 - 80



SCHEME 42 - 82



Note:
 - Pressure setting must be 30% higher than pressure induced by the load.
 - To be used only with A/B closed center spools.

	a	b	c	d	e	f
04	70	39,5	142	83	10,5	40
05	80	39,5	147	86	10,5	43

Ordering code

H 1 5 0 6 C **S** **0 0**

PILOT RATIO	
40	4:1
42	4:1 ADJUSTABLE DUMP SCREW
80	8:1
82	8:1 ADJUSTABLE DUMP SCREW

SPRINGS	4:1		8:1
	2	4	4
Setting range min.-max. [bar]	80 - 210	80 - 410	140 - 410
Pressure Increase [bar/turn]	40	72	72
Standard setting 4 l/min [bar]	200	350	350

PORTS	04	05
A,B	G 1/2"	G 3/4"
M	G 1/4"	G 1/4"
A1,A2	Ø 12	Ø 12