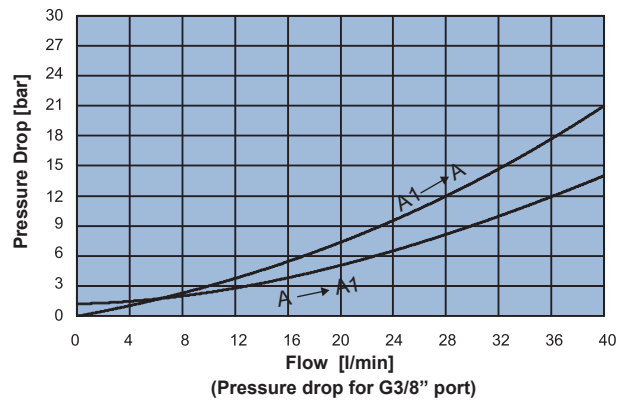
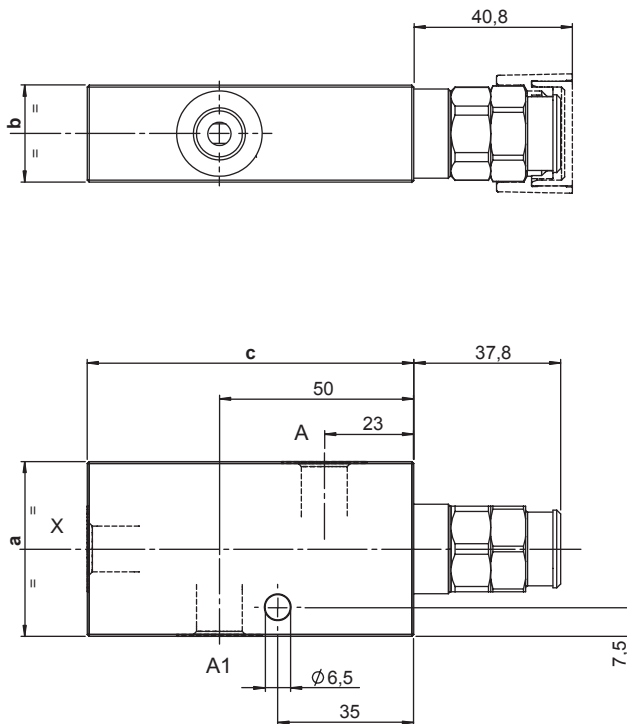
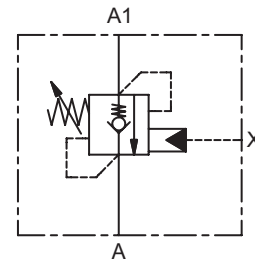


**SINGLE ACTING COUNTERBALANCE VALVE**

- Flow..... **40 l/min**
- Max working pressure..... **350 bar**
- Compensation..... **Not Compensated**
- Weight G 1/4"..... **0,8 Kg**
- Weight G 3/8"..... **1 Kg**
- Tamper proof cap..... **cod. 9021030190**



**Note:**

- Pressure setting must be 30% higher than pressure induced by the load.
- Back pressure can influence the opening pressure (LHD03X-C is recommended for circuits with high back pressure)

	a	b	c
<b>02</b>	45	25	84
<b>03</b>	50	30	90

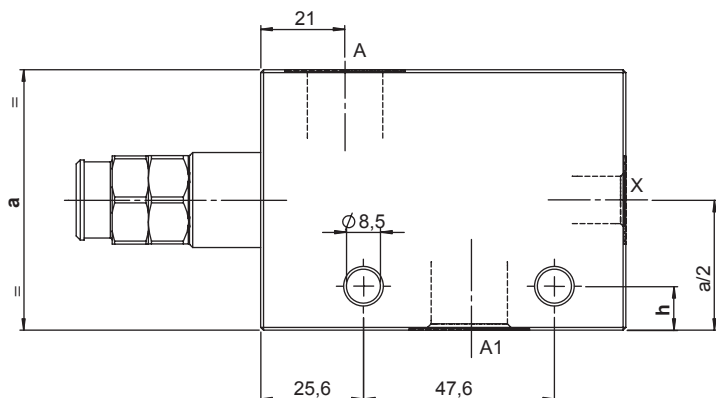
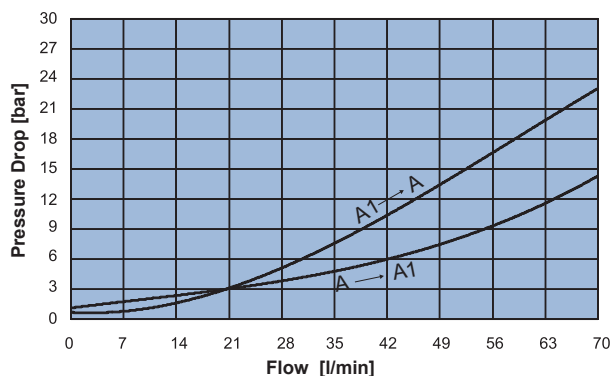
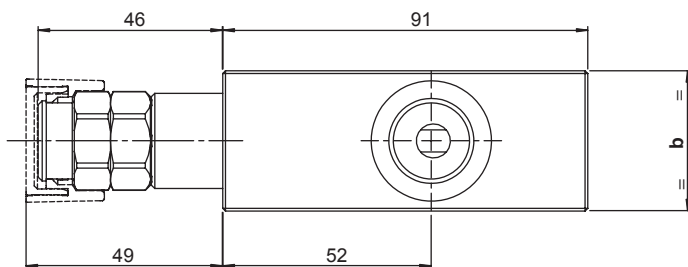
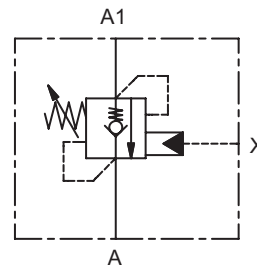
**Ordering code**

**H 3 0 0 1 N**   **S**  **0 0**

PILOT RATIO		SPRINGS		PORTS	
<b>40</b>	<b>4:1</b>	<b>2</b>	<b>3</b>	<b>02</b>	<b>03</b>
		Setting range min.-max. [bar]	80 - 210 / 150 - 350	A,A1,X	G 1/4" / G 3/8"
		Pressure Increase [bar/turn]	41 / 100		
		Standard setting 4 l/min [bar]	200 / 350		

**SINGLE ACTING COUNTERBALANCE VALVE**

- Flow..... **70 l/min**
- Max working pressure..... **350 bar**
- Compensation..... **Not Compensated**
- Weight G 3/8"..... **1,2 Kg**
- Weight G 1/2"..... **1,5 Kg**
- Tamper proof cap..... **cod. 9021030190**



**Note:**  
 - Pressure setting must be 30% higher than pressure induced by the load.  
 - Back pressure can influence the opening pressure (LHD05X-C is recommended for circuits with high back pressure)

	a	b	h
<b>03</b>	55	30	7
<b>04</b>	65	35	11

**Ordering code**

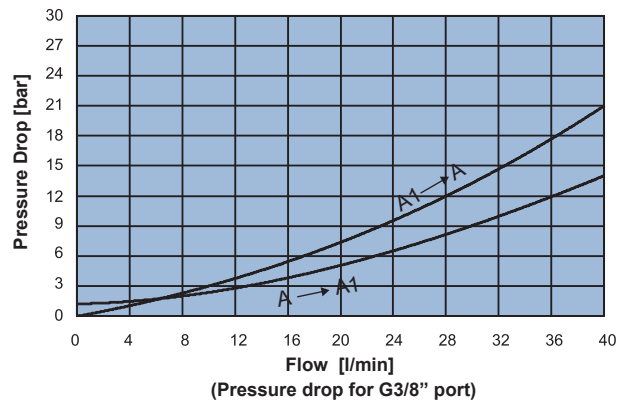
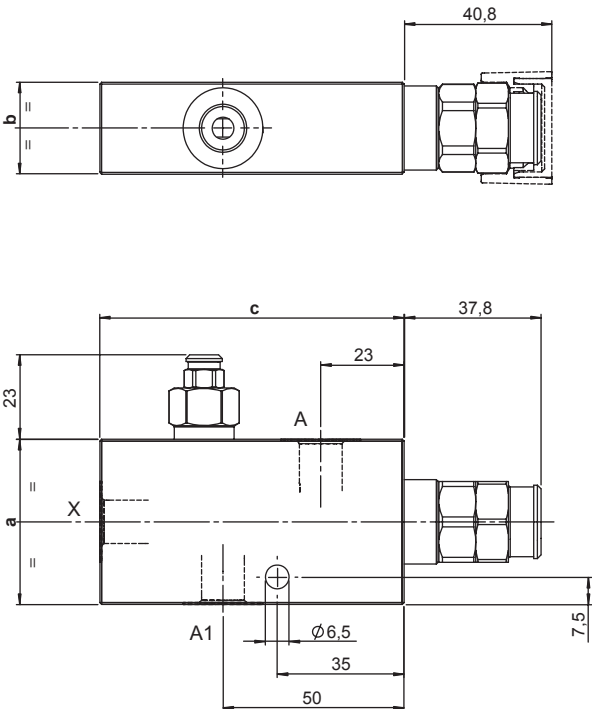
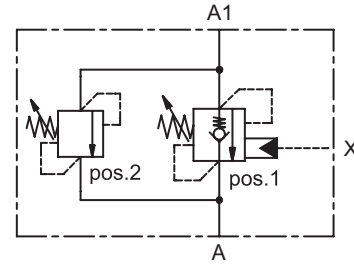
**H 5 0 0 1 N**     **S**     **0 0**

PILOT RATIO		SPRINGS				PORTS		
		rp 4:1		rp 9:1				
<b>40</b>	<b>4:1</b>	<b>2</b>	<b>3</b>	<b>2</b>	<b>3</b>	<b>03</b>	<b>04</b>	
<b>90</b>	<b>9:1</b>					A,A1	G 3/8"	G 1/2"
						X	G 1/4"	G 1/4"
		Setting range min.-max. [bar]	60 - 210	120 - 350	80 - 250	190 - 350		
		Pressure Increase [bar/turn]	62	114	50	121		
		Standard setting 4 l/min [bar]	200	350	200	350		



**SINGLE ACTING COUNTERBALANCE VALVE WITH PRESSURE RELIEF**

- Flow. . . . . **40 l/min**
- Max working pressure. . . . . **350 bar**
- Compensation. . . . . **Not Compensated**
- Weight G 1/4". . . . . **0,8 Kg**
- Weight G 3/8". . . . . **1 Kg**
- Tamper proof cap. . . . . **cod. 9021030190**



**Note:**  
 - Antishock valve pos.2 max flow 3 l/min  
 - Pressure setting must be 30% higher than pressure induced by the load.  
 - Back pressure can influence the opening pressure (LHD03X-C is recommended for circuits with high back pressure)

	a	b	c
<b>02</b>	45	25	84
<b>03</b>	50	30	90

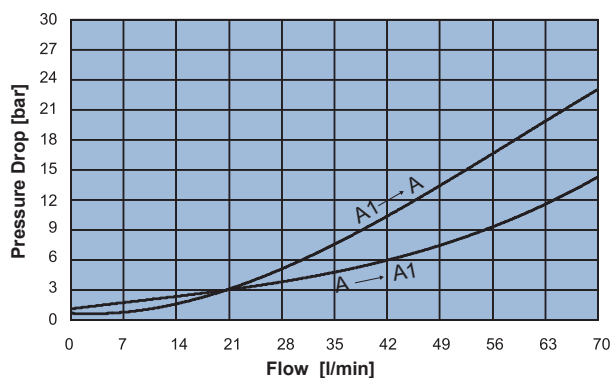
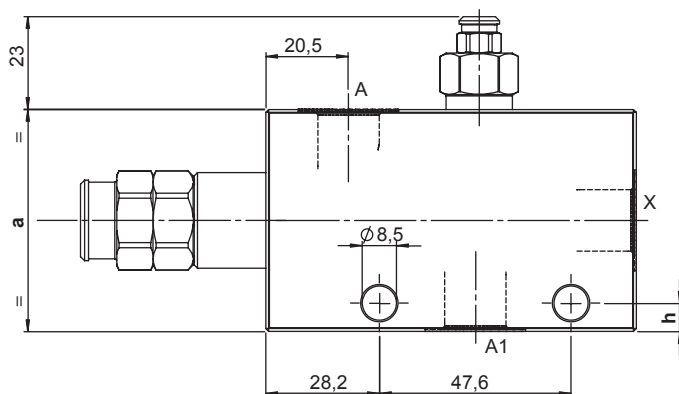
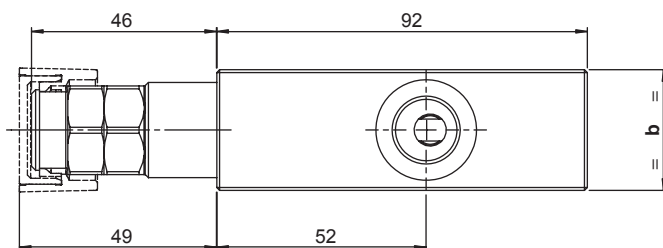
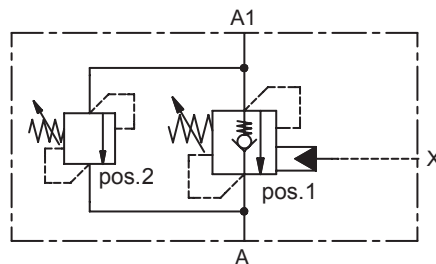
**Ordering code**

**H 3 0 0 1 N**     **S**     **0 0**

PILOT RATIO		SPRINGS		PORTS	
<b>46</b>	<b>4:1 + relief A1-A</b>	<b>3</b>		<b>02</b>	<b>03</b>
		pos.1	pos.2	A,A1,X	G 1/4" G 3/8"
		Setting range min.-max. [bar]	120 - 350 250 - 400		
		Pressure Increase [bar/turn]	100 250		
		Standard setting [bar]	350 @ 4 l/min 300 @ 20 cc/min		

**SINGLE ACTING COUNTERBALANCE VALVE WITH PRESSURE RELIEF**

- Flow..... **70 l/min**
- Max working pressure..... **350 bar**
- Compensation..... **Not Compensated**
- Weight G 3/8"..... **1,2 Kg**
- Weight G 1/2"..... **1,4 Kg**
- Tamper proof cap..... **cod. 9021030190**



**Note:**  
 - Antishock valve pos.2 max flow 3 l/min  
 - Pressure setting must be 30% higher than pressure induced by the load.  
 - Back pressure can influence the opening pressure (LHD05X-C is recommended for circuits with high back pressure)

	a	b	h
<b>03</b>	55	30	7
<b>04</b>	65	35	11

**Ordering code**

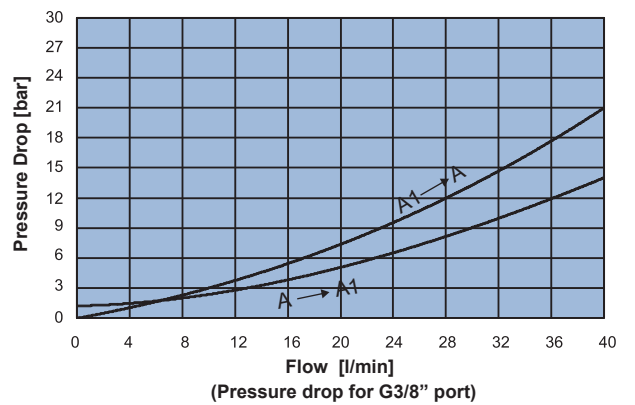
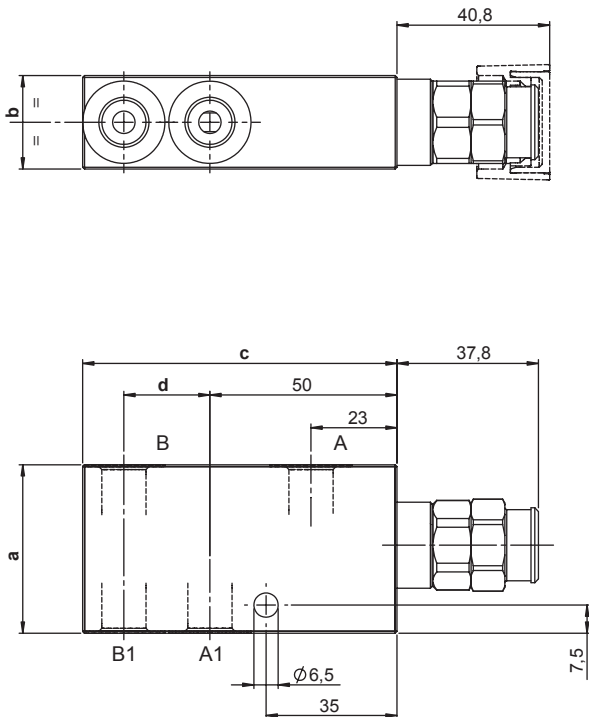
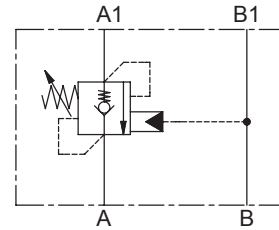
**H 5 0 0 1 N**     **S**     **0 0**

PILOT RATIO		SPRINGS		PORTS	
<b>46</b>	<b>4:1 + relief A1-A</b>	<b>3</b>		<b>03</b>	<b>04</b>
		pos.1	pos.2	A,A1	G 3/8" G 1/2"
		Setting range min.-max. [bar]	120 - 350 250 - 400	X	G 1/4" G 1/4"
		Pressure Increase [bar/turn]	114 250		
		Standard setting [bar]	350 @ 4 l/min 300 @ 20 cc/min		



**SINGLE ACTING COUNTERBALANCE VALVE**

- Flow..... **40 l/min**
- Max working pressure..... **350 bar**
- Compensation..... **Not Compensated**
- Weight G 1/4"..... **0,75 Kg**
- Weight G 3/8"..... **1,1 Kg**
- Tamper proof cap..... **cod. 9021030190**



**Note:**  
 - Pressure setting must be 30% higher than pressure induced by the load.  
 - Back pressure can influence the opening pressure (LHD03X-C is recommended for circuits with high back pressure)

	a	b	c	d
<b>02</b>	45	25	84	23
<b>03</b>	50	30	95	30

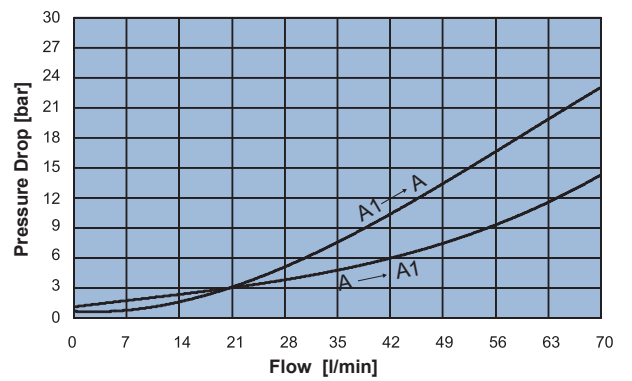
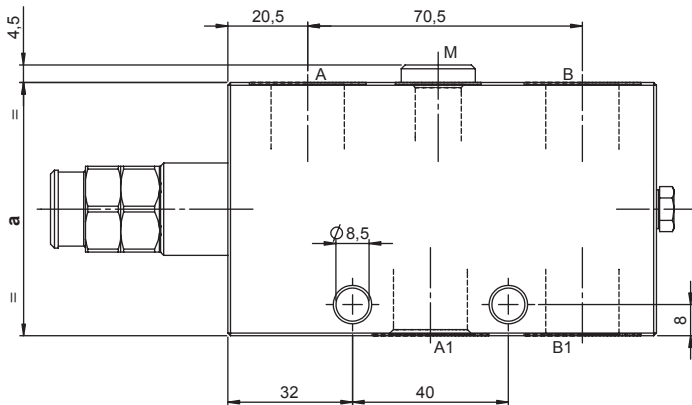
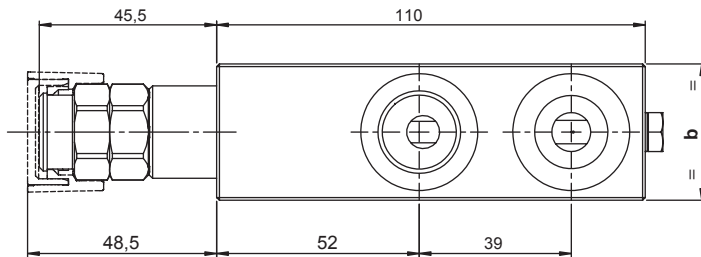
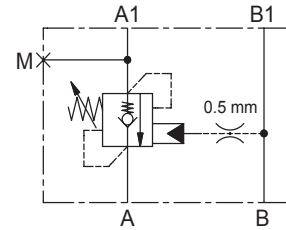
**Ordering code**

**H 3 0 0 4 N**   **S**  **0 0**

PILOT RATIO		SPRINGS		PORTS	
<b>40</b>	<b>4:1</b>	<b>2</b>	<b>3</b>	<b>02</b>	<b>03</b>
		Setting range min.-max. [bar]	80 - 210    150 - 350	A,B,A1,B1	G 1/4"    G 3/8"
		Pressure Increase [bar/turn]	41    100		
		Standard setting 4 l/min [bar]	200    350		

**SINGLE ACTING COUNTERBALANCE VALVE**

- Flow..... **70 l/min**
- Max working pressure..... **350 bar**
- Compensation..... **Not Compensated**
- Weight G 3/8"..... **1,35 Kg**
- Weight G 1/2"..... **1,8 Kg**
- Tamper proof cap..... **cod. 9021030190**



**Note:**  
 - Pressure setting must be 30% higher than pressure induced by the load.  
 - Back pressure can influence the opening pressure (LHD05X-C is recommended for circuits with high back pressure)

	a	b
<b>03</b>	55	30
<b>04</b>	65	35

**Ordering code**

**H 5 0 0 4 N**     **S**   **0 0**

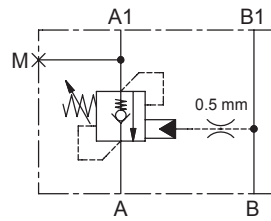
PILOT RATIO		SPRINGS		PORTS	
<b>40</b>	<b>4:1</b>		<b>4:1</b>	<b>03</b>	<b>04</b>
		<b>2</b>	<b>3</b>	A,A1,B,B1	G 3/8" G 1/2"
		Setting range min.-max. [bar]	60 - 210 120 - 350	M	G 1/4" G 1/4"
		Pressure Increase [bar/turn]	62 114		
		Standard setting 4 l/min [bar]	200 350		



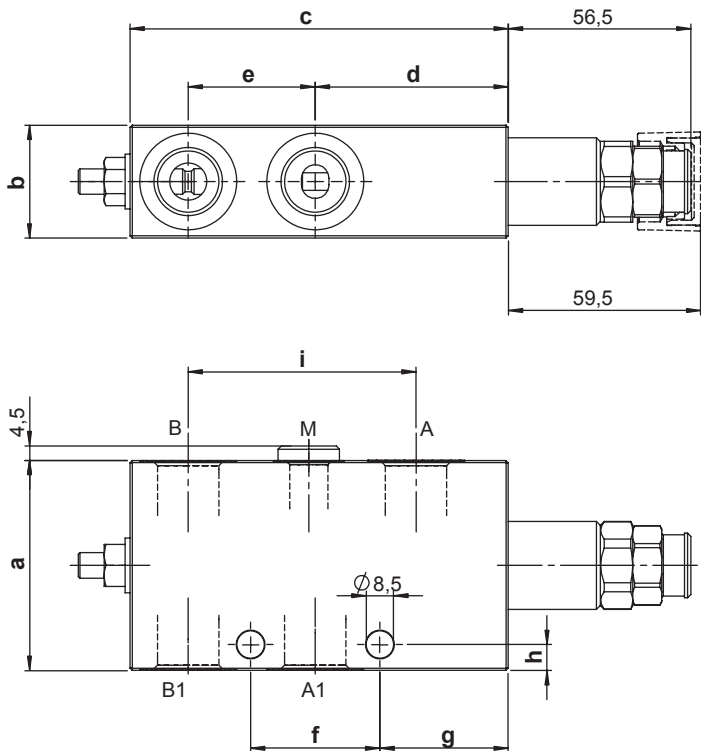
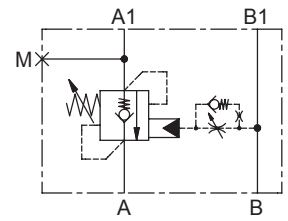
**SINGLE ACTING COUNTERBALANCE VALVE**

- Flow..... **110 l/min**
- Max working pressure..... **410 bar**
- Compensation..... **Not Compensated**
- Weight G 1/2"..... **2 Kg**
- Weight G 3/4"..... **2,5 Kg**
- Tamper proof cap..... **cod.9021030190**

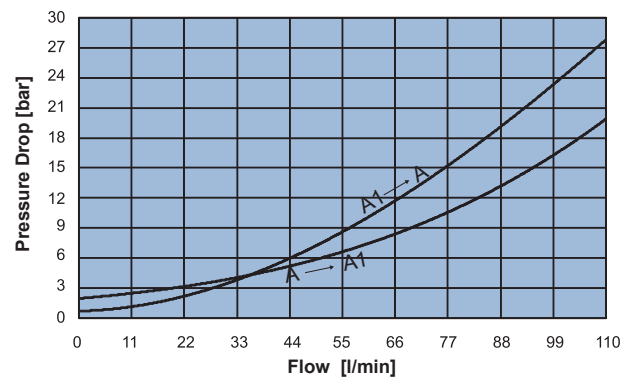
**SCHEME 40 - 90**



**SCHEME 42 - 92**



	a	b	c	d	e	f	g	h	i
<b>04</b>	65	35	117	59,7	39.3	40	39,7	8	70.5
<b>05</b>	70	40	130	60	47	47.6	36	11	78



**Note:**

- Pressure setting must be 30% higher than pressure induced by the load.
- Back pressure can influence the opening pressure (LHD10X-C is recommended for circuits with high back pressure)

**Ordering code**

**H 1 0 0 4 N**     **S**     **0 0**

PILOT RATIO	
<b>40</b>	<b>4:1</b>
<b>42</b>	<b>4:1</b> ADJUSTABLE DUMP SCREW
<b>90</b>	<b>9:1</b>
<b>92</b>	<b>9:1</b> ADJUSTABLE DUMP SCREW

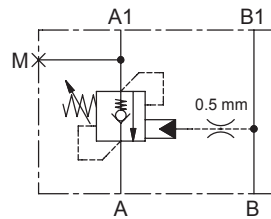
SPRINGS	rp 4:1		rp 9:1
	<b>2</b>	<b>4</b>	<b>4</b>
Setting range min.-max. [bar]	60 - 210	120 - 410	150 - 410
Pressure Increase [bar/turn]	52	85	100
Standard setting 4 l/min [bar]	200	350	350

PORTS	<b>04</b>	<b>05</b>
A,A1,B,B1	G 1/2"	G 3/4"
M	G 1/4"	G 1/4"

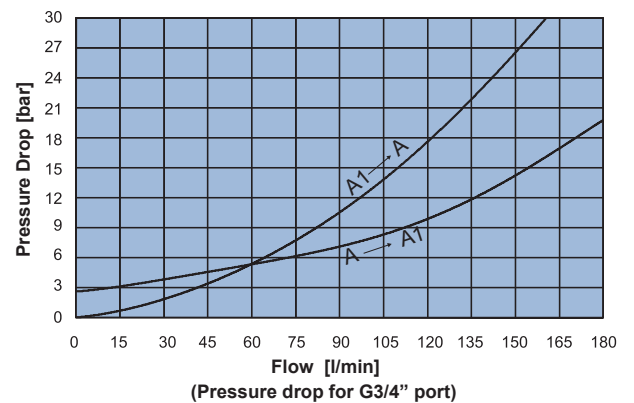
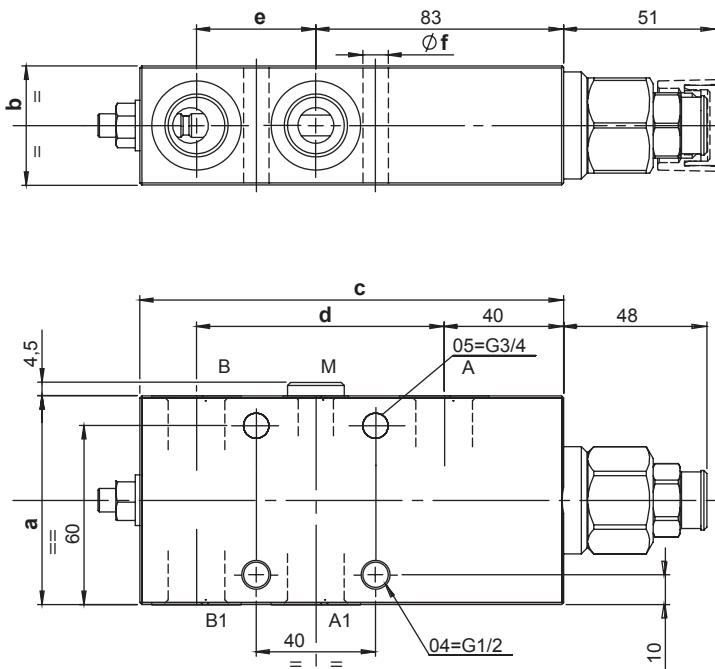
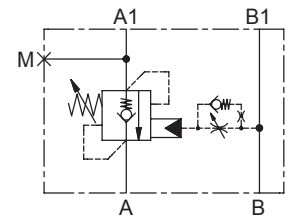
**SINGLE ACTING COUNTERBALANCE VALVE**

- Flow..... **180 l/min**
- Max working pressure..... **410 bar**
- Compensation..... **Not Compensated**
- Weight G 1/2"..... **3 Kg**
- Weight G 3/4"..... **3,4 Kg**
- Tamper proof cap..... **cod. 9021030190**

**SCHEME 40 - 80**



**SCHEME 42 - 82**



**Note:**  
 - Pressure setting must be 30% higher than pressure induced by the load.  
 - Back pressure can influence the opening pressure (LHD15X-C is recommended for circuits with high back pressure)

	a	b	c	d	e	f
<b>04</b>	70	40	142	83	40	8,5
<b>05</b>	80	40	147	86	43	10,5

**Ordering code**

**H 1 5 0 4 N**       **S**    **0 0**

PILOT RATIO	
<b>40</b>	<b>4:1</b>
<b>42</b>	<b>4:1</b> ADJUSTABLE DUMP SCREW
<b>80</b>	<b>8:1</b>
<b>82</b>	<b>8:1</b> ADJUSTABLE DUMP SCREW

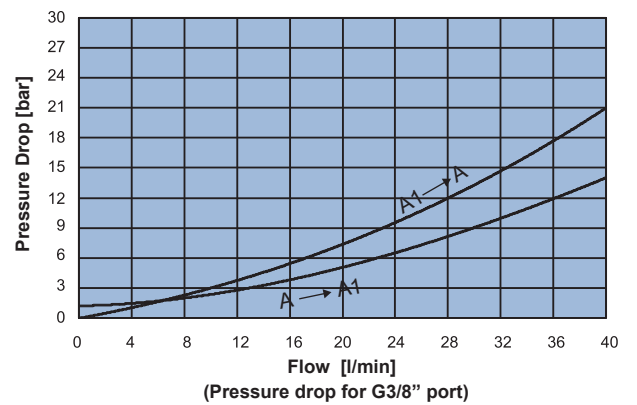
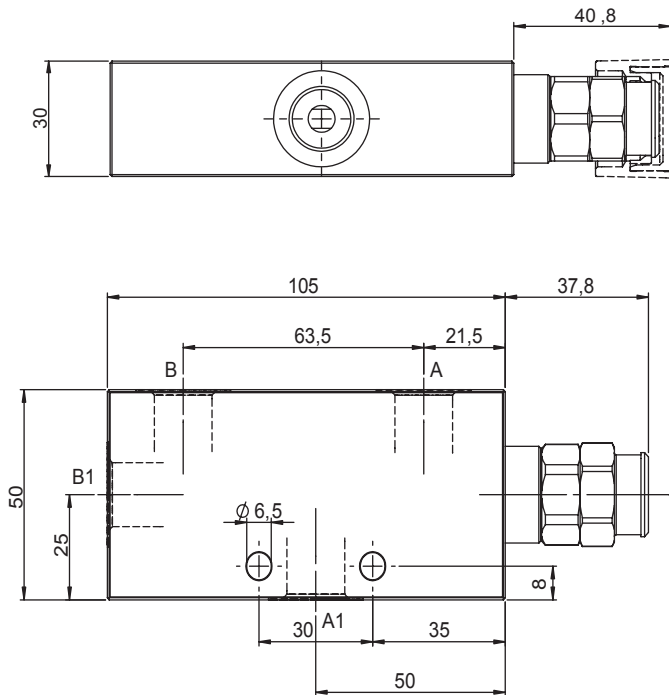
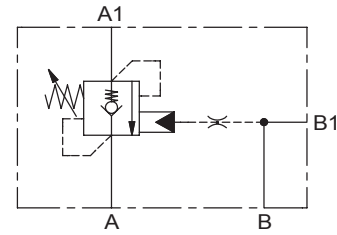
SPRINGS	rp 4:1		rp 8:1
	<b>2</b>	<b>4</b>	<b>4</b>
Setting range min.-max. [bar]	80 - 210	80 - 410	140 - 410
Pressure Increase [bar/turn]	40	72	72
Standard setting 4 l/min [bar]	200	350	350

PORTS	<b>04</b>	<b>05</b>
A,A1,B,B1	G 1/2"	G 3/4"
M	G 1/4"	G 1/4"



**SINGLE ACTING COUNTERBALANCE VALVE**

- Flow. . . . . **40 l/min**
- Max working pressure. . . . . **350 bar**
- Compensation. . . . . **Not Compensated**
- Weight. . . . . **0,75 Kg**
- Tamper proof cap. . . . . **cod.9021030190**



**Note:**  
 - Pressure setting must be 30% higher than pressure induced by the load.  
 - Back pressure can influence the opening pressure (LHD03X-C is recommended for circuits with high back pressure)

**Ordering code**

**H 3 0 0 4 N**     **S**   **0 0**

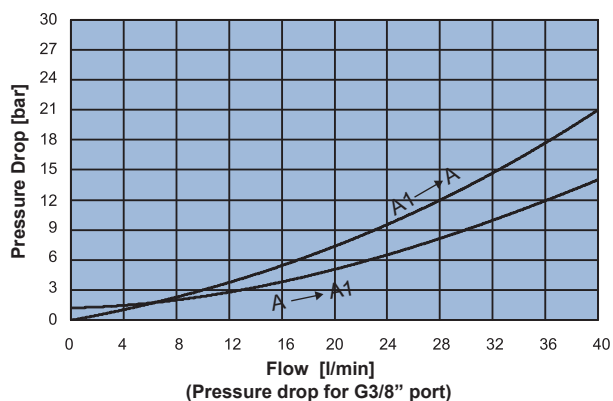
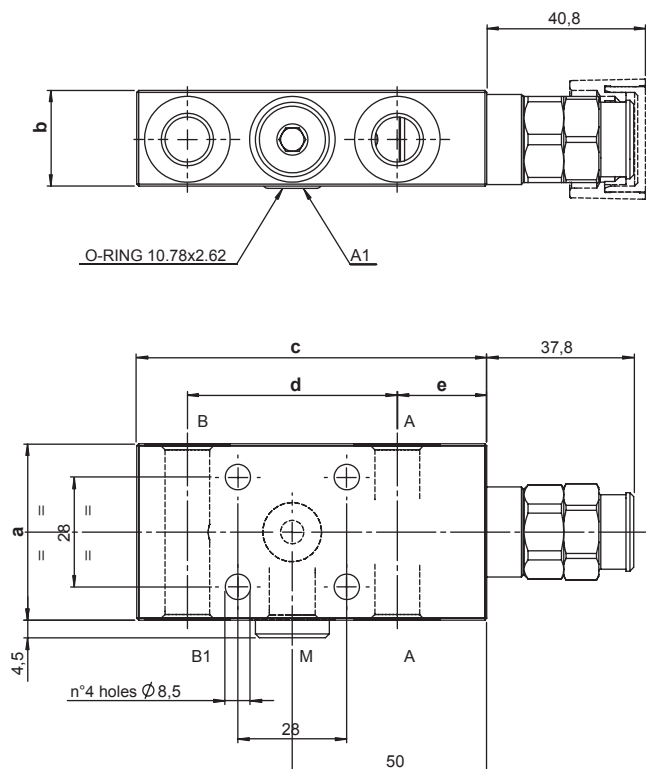
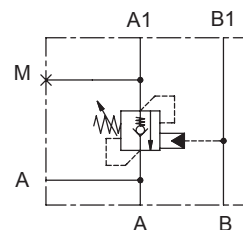
PILOT RATIO	
<b>41</b>	<b>4:1+dia.0,5mm</b>

SPRINGS	2	3
Setting range min.-max. [bar]	80 - 210	150 - 350
Pressure Increase [bar/turn]	41	100
Standard setting 4 l/min [bar]	200	350

PORTS	03
A,B,A1,B1	G 3/8"

**SINGLE ACTING COUNTERBALANCE VALVE FLANGED 28x28**

- Flow..... **40 l/min**
- Max working pressure..... **350 bar**
- Compensation..... **Not Compensated**
- Weight G 1/4"..... **0,75 Kg**
- Weight G 3/8"..... **1 Kg**
- Tamper proof cap..... **cod. 9021030190**



**Note:**  
 - Pressure setting must be 30% higher than pressure induced by the load.  
 - Back pressure can influence the opening pressure (LHD03X-C is recommended for circuits with high back pressure)

	a	b	c	d	e
<b>02</b>	45	24,5	90	54	23
<b>03</b>	50	29,5	95	60	20

**Ordering code**

**H 3 0 0 5 N**     **S**     **0 0**

PILOT RATIO	
<b>40</b>	<b>4:1</b>

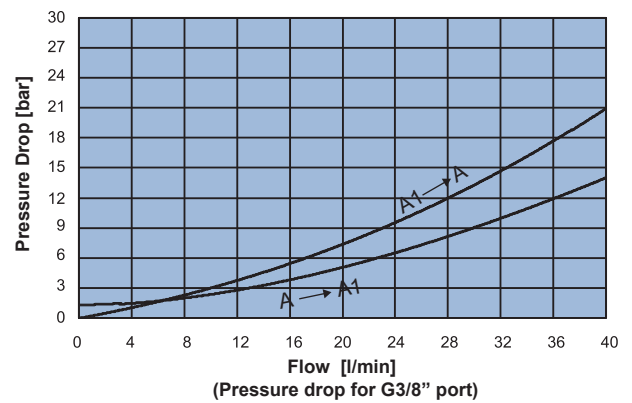
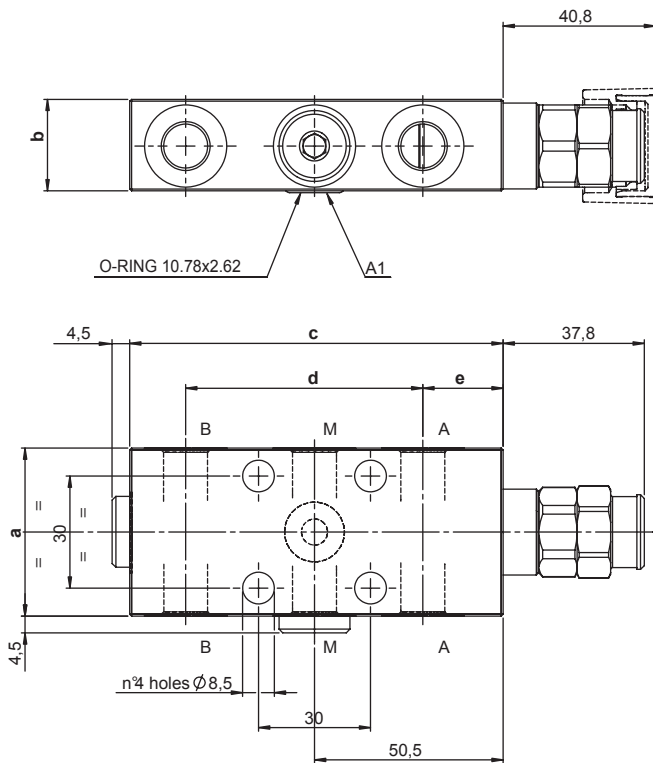
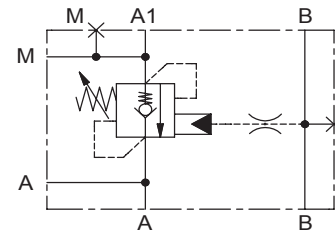
SPRINGS	2	3
Setting range min.-max. [bar]	80 - 210	150 - 350
Pressure Increase [bar/turn]	41	100
Standard setting 4 l/min [bar]	200	350

PORTS	02	03
A,B,B1	G 1/4"	G 3/8"
A1	Ø 6	Ø 6
M	G 1/4"	G 1/4"



**SINGLE ACTING COUNTERBALANCE VALVE FLANGED 30x30**

- Flow..... **40 l/min**
- Max working pressure..... **350 bar**
- Compensation..... **Not Compensated**
- Weight G 1/4"..... **0,8 Kg**
- Weight G 3/8"..... **1 Kg**
- Tamper proof cap..... **cod.9021030190**



**Note:**  
 - Pressure setting must be 30% higher than pressure induced by the load.  
 - Back pressure can influence the opening pressure (LHD03X-C is recommended for circuits with high back pressure)

	a	b	c	d	e
<b>02</b>	45	24,5	100	63,5	21,5
<b>03</b>	50	29,5	100	66	19,5

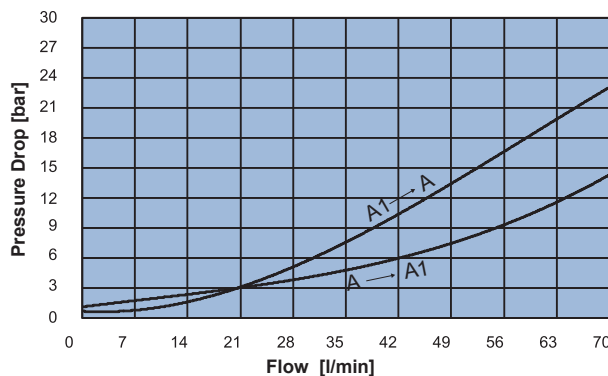
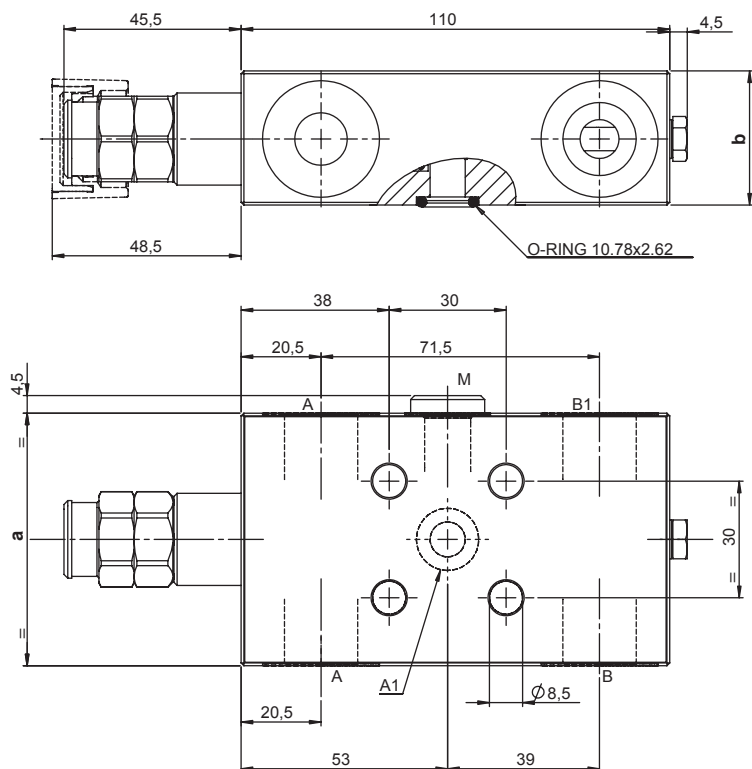
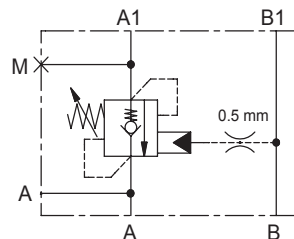
**Ordering code**

**H 3 0 0 7 N**   **S**  **0 0**

PILOT RATIO		SPRINGS		PORTS	
<b>40</b>	<b>4:1</b>	<b>2</b>	<b>3</b>	<b>02</b>	<b>03</b>
		Setting range min.-max. [bar]	80 - 210 / 150 - 350	A,B	G 1/4" / G 3/8"
		Pressure Increase [bar/turn]	41 / 100	A1	Ø 6 / Ø 6
		Standard setting 4 l/min [bar]	200 / 350	M	G 1/4" / G 1/4"

**SINGLE ACTING COUNTERBALANCE VALVE FLANGED 30x30**

- Flow ..... **70 l/min**
- Max working pressure ..... **350 bar**
- Compensation ..... **Not Compensated**
- Weight G 3/8" ..... **1,3 Kg**
- Weight G 1/2" ..... **1,75 Kg**
- Tamper proof cap ..... **cod. 9021030190**



**Note:**  
 - Pressure setting must be 30% higher than pressure induced by the load.  
 - Back pressure can influence the opening pressure (LHD05X-C is recommended for circuits with high back pressure)

	a	b
<b>03</b>	55	29,5
<b>04</b>	65	34,5

**Ordering code**

**H 5 0 0 5 N**     **S**   **0 0**

PILOT RATIO	
<b>40</b>	<b>4:1</b>

SPRINGS	2	3
Setting range min.-max. [bar]	60 - 210	120 - 350
Pressure Increase [bar/turn]	62	114
Standard setting 4 l/min [bar]	200	350

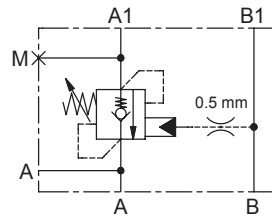
PORTS	03	04
A,B,B1	G 3/8"	G 1/2"
A1	Ø 9	Ø 9
M	G 1/4"	G 1/4"



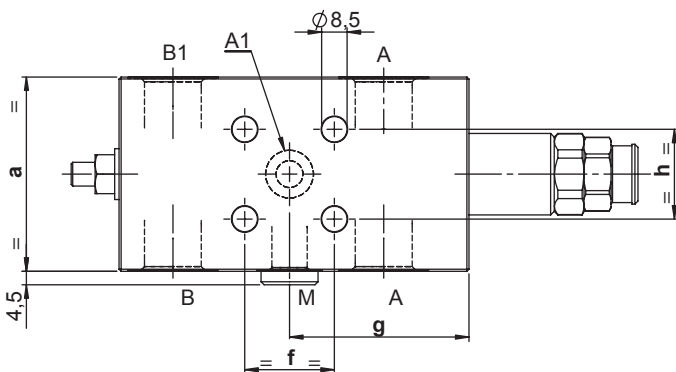
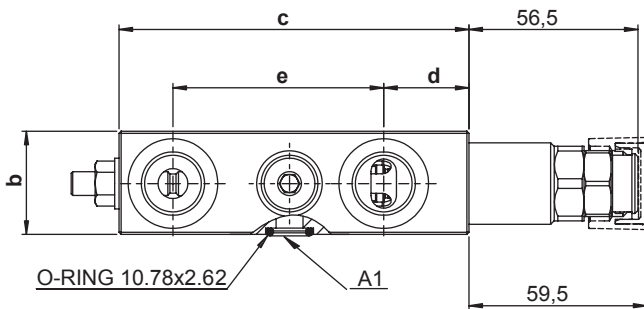
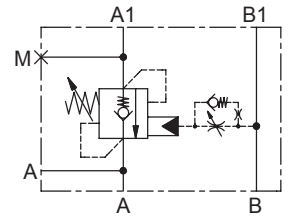
**SINGLE ACTING COUNTERBALANCE VALVE FLANGED fxh**

- Flow..... **110 l/min**
- Max working pressure..... **410 bar**
- Compensation..... **Not Compensated**
- Weight G 1/2"..... **1,9 Kg**
- Weight G 3/4"..... **2,2 Kg**
- Tamper proof cap..... **cod.9021030190**

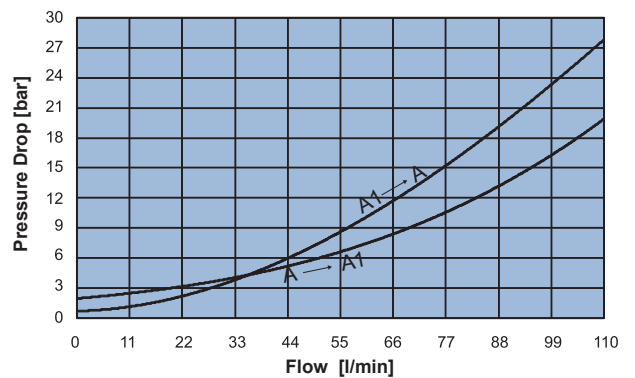
**SCHEME 40 - 90**



**SCHEME 42 - 92**



	a	b	c	d	e	f	g	h
<b>04</b>	65	34,5	117	26,5	72,5	30	60	30
<b>05</b>	80	39,5	130	22	86	40	62	40



**Note:**

- Pressure setting must be 30% higher than pressure induced by the load.
- Back pressure can influence the opening pressure (LHD10X-C is recommended for circuits with high back pressure)

**Ordering code**

**H 1 0 0 5 N**       **S**    **0 0**

PILOT RATIO	
<b>40</b>	<b>4:1</b>
<b>42</b>	<b>4:1</b> ADJUSTABLE DUMP SCREW
<b>90</b>	<b>9:1</b>
<b>92</b>	<b>9:1</b> ADJUSTABLE DUMP SCREW

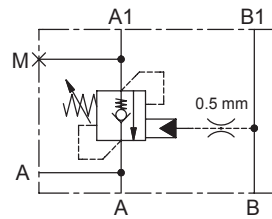
SPRINGS	rp 4:1		rp 9:1
	<b>2</b>	<b>4</b>	<b>4</b>
Setting range min.-max. [bar]	60 - 210	120 - 410	150 - 410
Pressure Increase [bar/turn]	52	85	100
Standard setting 4 l/min [bar]	200	350	350

PORTS	<b>04</b>	<b>05</b>
A,B,B1	G 1/2"	G 3/4"
A1	Ø 9	Ø 9
M	G 1/4"	G 1/4"

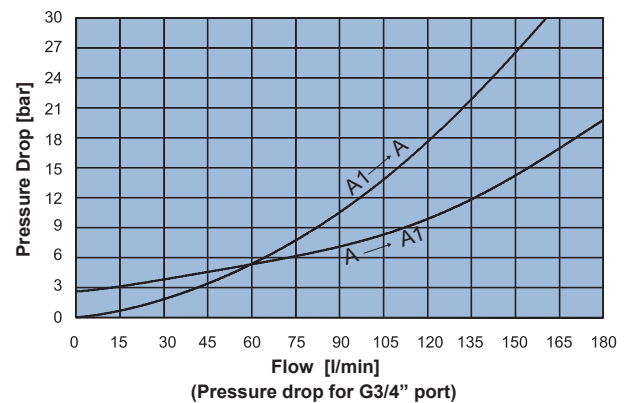
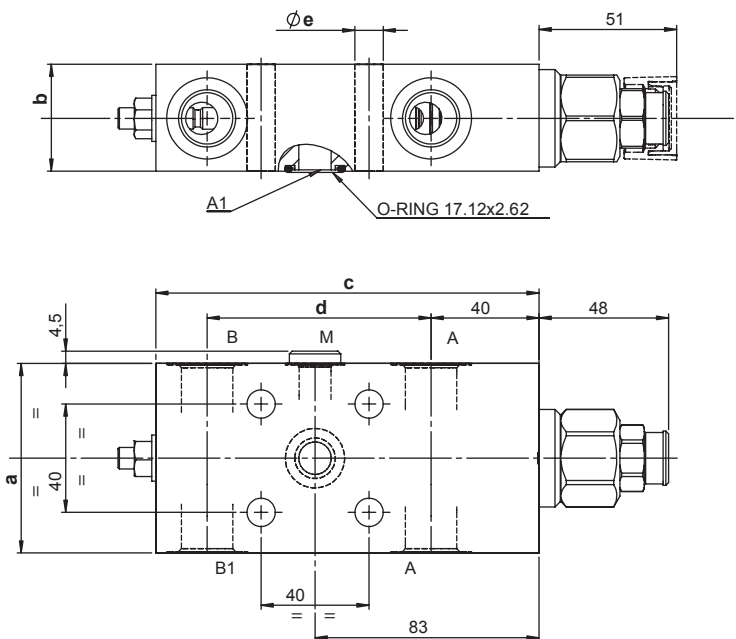
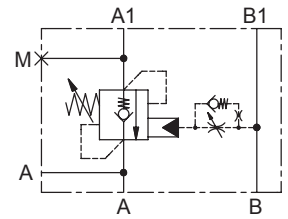
**SINGLE ACTING COUNTERBALANCE VALVE FLANGED 40x40**

- Flow..... **180 l/min**
- Max working pressure..... **410 bar**
- Compensation..... **Not Compensated**
- Weight G 1/2"..... **2,9 Kg**
- Weight G 3/4"..... **3,3 Kg**
- Tamper proof cap..... **cod.9021030190**

**SCHEME 40 - 80**



**SCHEME 42 - 82**



**Note:**

- Pressure setting must be 30% higher than pressure induced by the load.
- Back pressure can influence the opening pressure (LHD15X-C is recommended for circuits with high back pressure)

	a	b	c	d	e
<b>04</b>	70	39,5	142	83	10,5
<b>05</b>	80	39,5	147	86	10,5

**Ordering code**

**H 1 5 0 5 N**       **S**    **0 0**

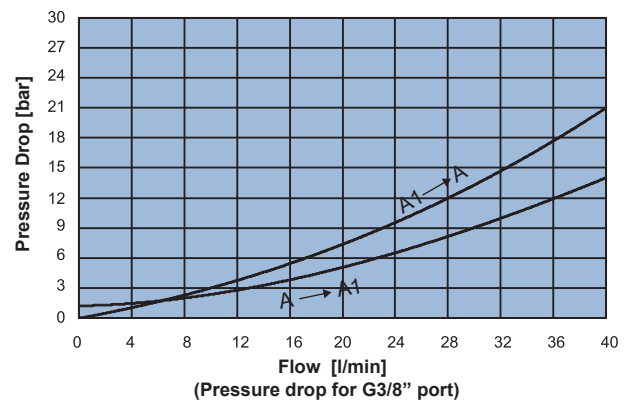
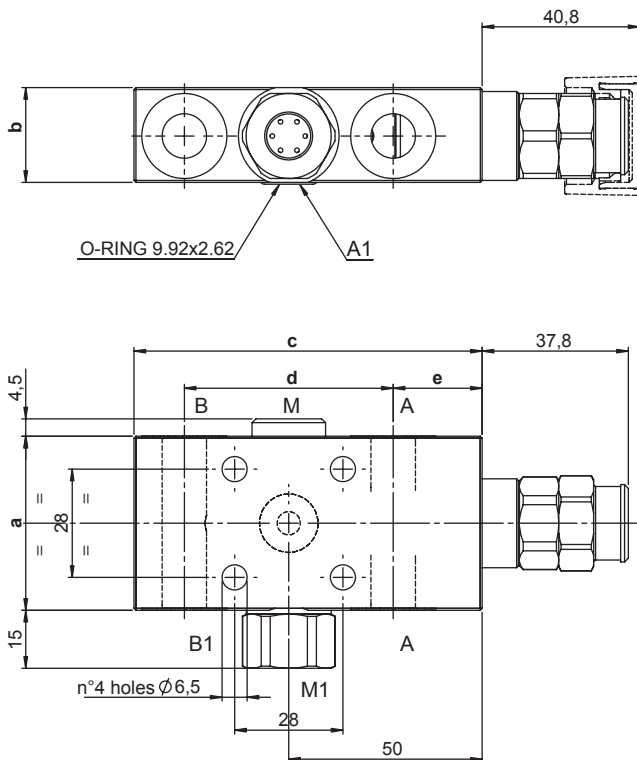
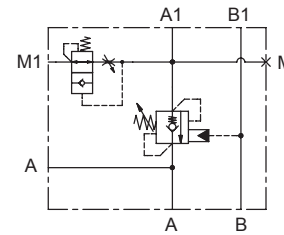
PILOT RATIO	
<b>40</b>	<b>4:1</b>
<b>42</b>	<b>4:1</b> ADJUSTABLE DUMP SCREW
<b>80</b>	<b>8:1</b>
<b>82</b>	<b>8:1</b> ADJUSTABLE DUMP SCREW

SPRINGS	rp 4:1		rp 8:1
	<b>2</b>	<b>4</b>	<b>4</b>
Setting range min.-max. [bar]	80 - 210	80 - 410	140 - 410
Pressure Increase [bar/turn]	40	72	72
Standard setting 4 l/min [bar]	200	350	350

PORTS	<b>04</b>	<b>05</b>
A,B,B1	G 1/2"	G 3/4"
M	G 1/4"	G 1/4"
A1	Ø 12	Ø 12

**SINGLE ACTING COUNTERBALANCE VALVE FLANGED 28x28**

- Flow..... **40 l/min**
- Max working pressure..... **350 bar**
- Compensation..... **Not Compensated**
- Weight G 1/4"..... **0,8 Kg**
- Weight G 3/8"..... **1 Kg**
- Tamper proof cap..... **cod. 9021030190**



**Note:**  
 - Pressure setting must be 30% higher than pressure induced by the load.  
 - Back pressure can influence the opening pressure (LHD03X-C is recommended for circuits with high back pressure)

	a	b	c	d	e
<b>02</b>	45	24,5	90	54	23
<b>03</b>	50	29,5	95	59	21

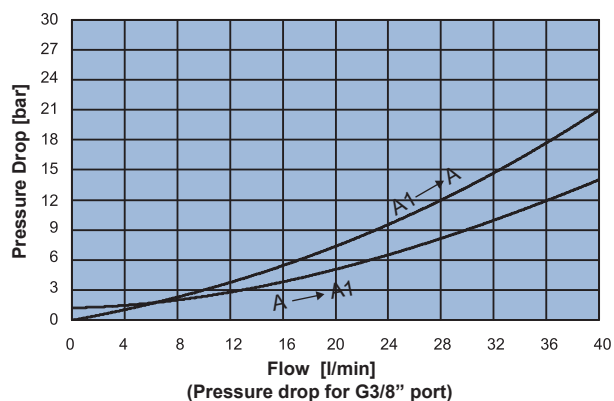
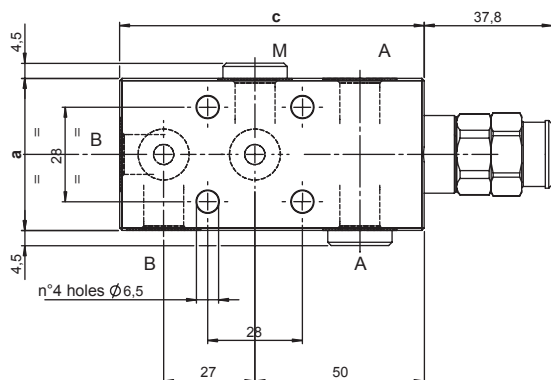
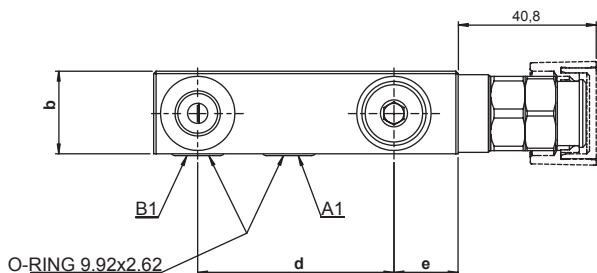
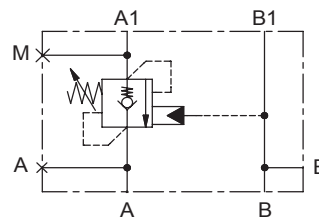
**Ordering code**

**H 3 0 0 5 N**   **S**  **0 0**

PILOT RATIO		SPRINGS		PORTS	
<b>43</b>	<b>4:1</b>	<b>2</b>	<b>3</b>	<b>02</b>	<b>03</b>
		Setting range min.-max. [bar]	80 - 210    150 - 350	A,B,B1	G 1/4"    G 3/8"
		Pressure Increase [bar/turn]	41    100	A1	Ø 6    Ø 6
		Standard setting 4 l/min [bar]	200    350	M	G 1/4"    G 1/4"

**SINGLE ACTING COUNTERBALANCE VALVE FLANGED 28x28**

- Flow ..... **40 l/min**
- Max working pressure ..... **350 bar**
- Compensation ..... **Not Compensated**
- Weight G 1/4" ..... **0,8 Kg**
- Weight G 3/8" ..... **1 Kg**
- Tamper proof cap ..... **cod. 9021030190**



**Note:**  
 - Pressure setting must be 30% higher than pressure induced by the load.  
 - Back pressure can influence the opening pressure (LHD03X-C is recommended for circuits with high back pressure)

	a	b	c	d	e
<b>02</b>	45	24,5	90	58	19
<b>03</b>	50	29,5	95	59	21

**Ordering code**

**H 3 0 0 6 N**   **S**  **0 0**

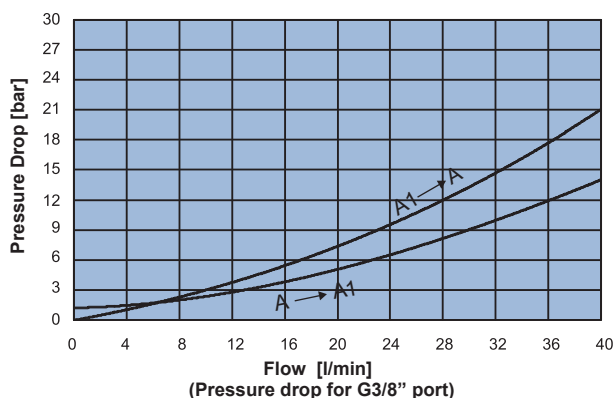
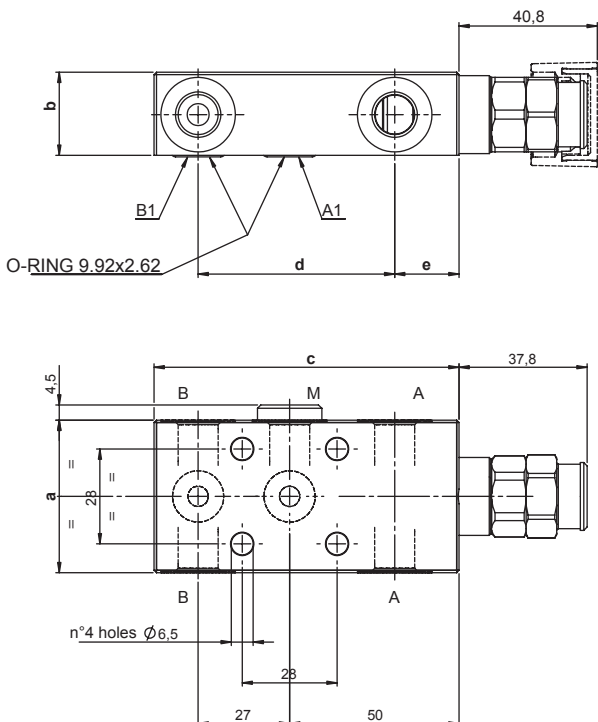
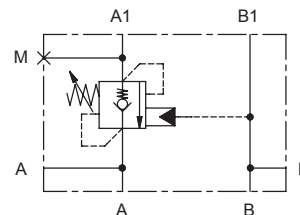
PILOT RATIO		SPRINGS		PORTS	
<b>40</b>	<b>4:1</b>	<b>2</b>	<b>3</b>	<b>02</b>	<b>03</b>
		Setting range min.-max. [bar]	80 - 210    150 - 350	A,B	G 1/4"    G 3/8"
		Pressure Increase [bar/turn]	41    100	A1,B1	Ø 6    Ø 6
		Standard setting 4 l/min [bar]	200    350	M	G 1/4"    G 1/4"





**SINGLE ACTING COUNTERBALANCE VALVE FLANGED 28x28**

- Flow..... **40 l/min**
- Max working pressure..... **350 bar**
- Compensation..... **Not Compensated**
- Weight G 1/4"..... **0,75 Kg**
- Weight G 3/8"..... **1 Kg**
- Tamper proof cap..... **cod.9021030190**



**Note:**  
 - Pressure setting must be 30% higher than pressure induced by the load.  
 - Back pressure can influence the opening pressure (LHD03X-C is recommended for circuits with high back pressure)

	a	b	c	d	e
<b>02</b>	45	24,5	90	58	19
<b>03</b>	50	29,5	95	59	21

**Ordering code**

**H 3 0 0 8 N**   **S**  **0 0**

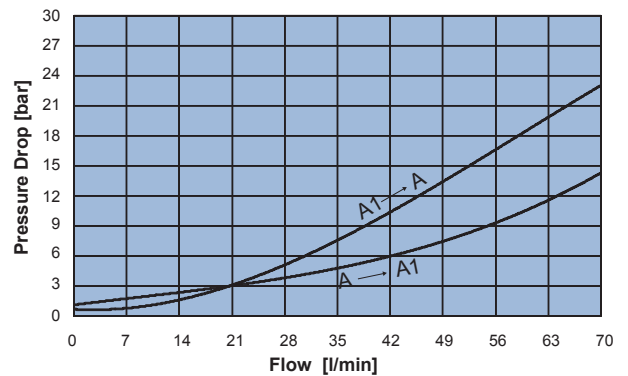
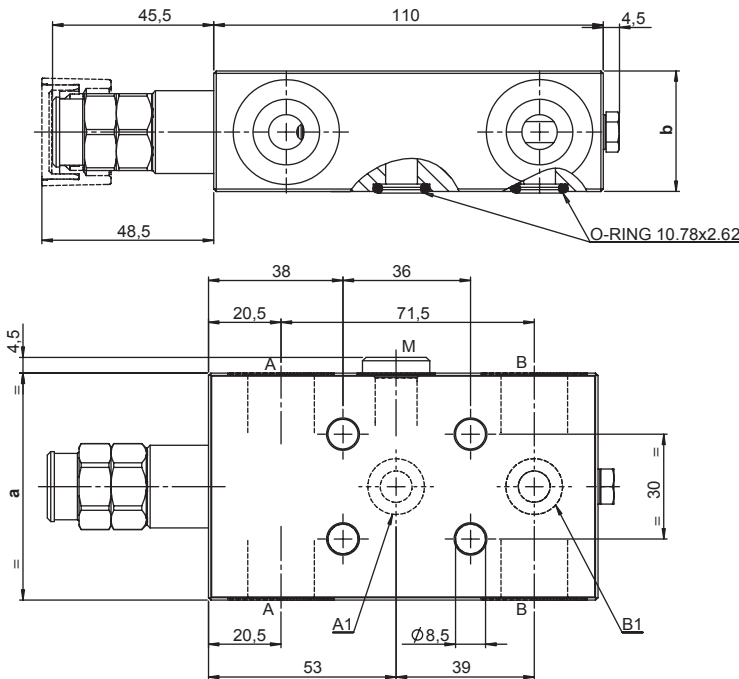
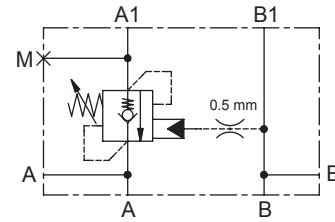
PILOT RATIO	
<b>40</b>	<b>4:1</b>

SPRINGS	2	3
Setting range min.-max. [bar]	80 - 210	150 - 350
Pressure Increase [bar/turn]	41	100
Standard setting 4 l/min [bar]	200	350

PORTS	02	03
A,B	G 1/4"	G 3/8"
A1,B1	Ø 6	Ø 6
M	G 1/4"	G 1/4"

**SINGLE ACTING COUNTERBALANCE VALVE FLANGED 30x36**

- Flow ..... **70 l/min**
- Max working pressure ..... **350 bar**
- Compensation ..... **Not Compensated**
- Weight G 3/8" ..... **1,3 Kg**
- Weight G 1/2" ..... **1,7 Kg**
- Tamper proof cap ..... **cod. 9021030190**



**Note:**  
 - Pressure setting must be 30% higher than pressure induced by the load.  
 - Back pressure can influence the opening pressure (LHD05X-C is recommended for circuits with high back pressure)

	a	b
<b>03</b>	55	29,5
<b>04</b>	65	34,5

**Ordering code**

**H 5 0 0 6 N**     **S**     **0 0**

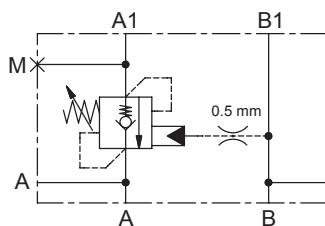
PILOT RATIO		SPRINGS		PORTS	
<b>40</b>	<b>4:1</b>	<b>2</b>	<b>3</b>	<b>03</b>	<b>04</b>
		Setting range min.-max. [bar]	60 - 210    120 - 350	A,B	G 3/8"    G 1/2"
		Pressure Increase [bar/turn]	62    114	A1,B1	Ø 9    Ø 9
		Standard setting 4 l/min [bar]	200    350	M	G 1/4"    G 1/4"



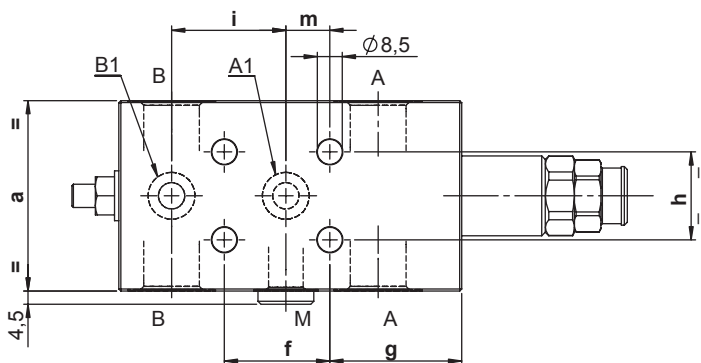
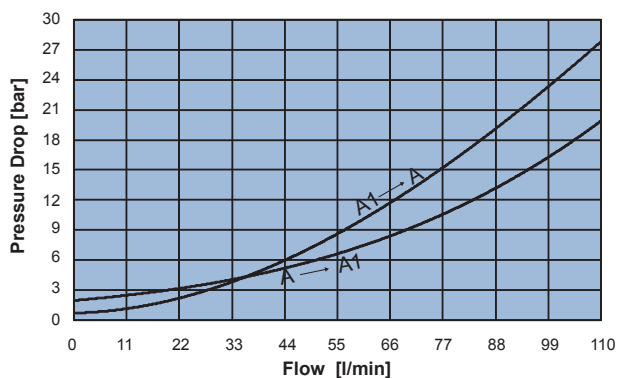
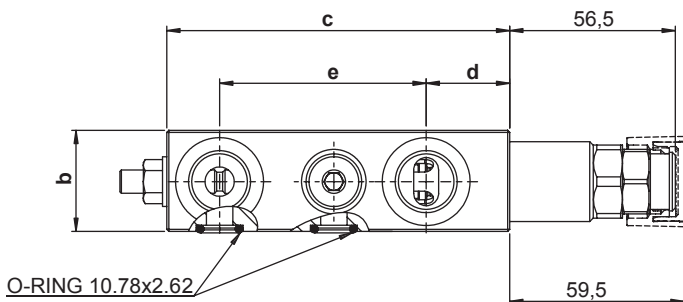
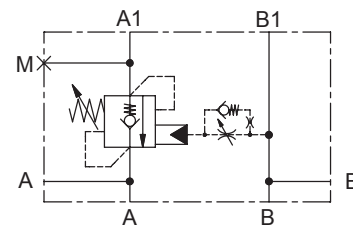
**SINGLE ACTING COUNTERBALANCE VALVE FLANGED 30x36**

- Flow..... **110 l/min**
- Max working pressure..... **410 bar**
- Compensation..... **Not Compensated**
- Weight..... **1,9 Kg**
- Tamper proof cap..... **cod.9021030190**

**SCHEME 40 - 90**



**SCHEME 42 - 92**



**Note:**  
 - Pressure setting must be 30% higher than pressure induced by the load.  
 - Back pressure can influence the opening pressure (LHD10X-C is recommended for circuits with high back pressure)

	a	b	c	d	e	f	g	h	i	m
<b>04</b>	65	34,5	117	28,5	70,5	36	45	30	39	15

**Ordering code**

**H 1 0 0 6 N**     **S**     **0 0**

PILOT RATIO	
<b>40</b>	<b>4:1</b>
<b>42</b>	<b>4:1</b> ADJUSTABLE DUMP SCREW
<b>90</b>	<b>9:1</b>
<b>92</b>	<b>9:1</b> ADJUSTABLE DUMP SCREW

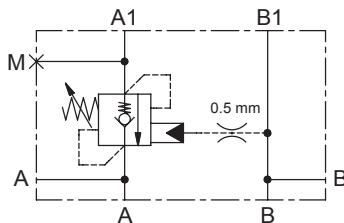
SPRINGS	rp 4:1		rp 9:1
	<b>2</b>	<b>4</b>	<b>4</b>
Setting range min.-max. [bar]	60 - 210	120 - 410	150 - 410
Pressure Increase [bar/turn]	52	85	100
Standard setting 4 l/min [bar]	200	350	350

PORTS	<b>04</b>
A,B,B1	G 1/2"
A1,B1	Ø 9
M	G 1/4"

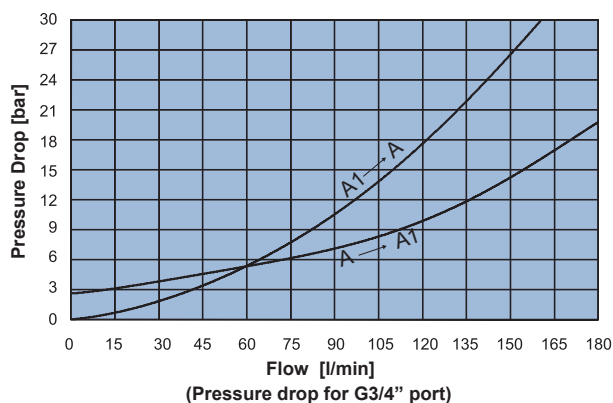
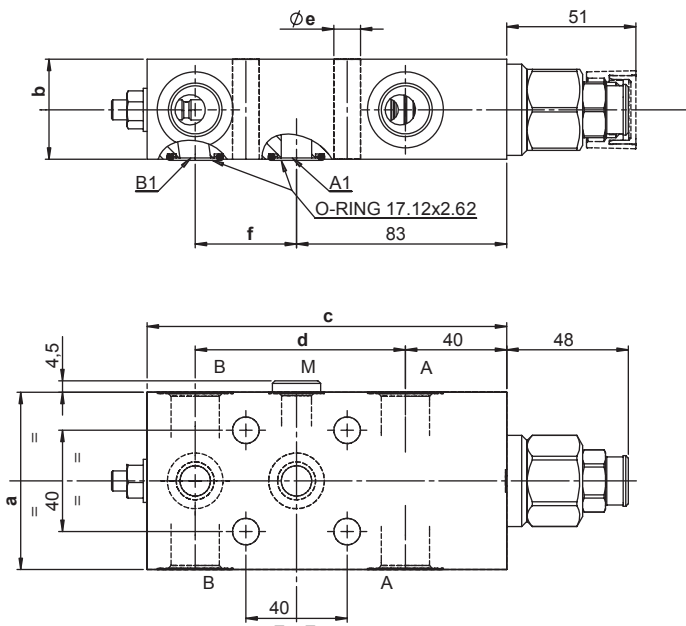
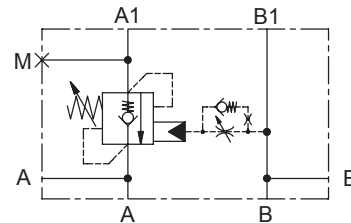
**SINGLE ACTING COUNTERBALANCE VALVE FLANGED 40x40**

- Flow..... **180 l/min**
- Max working pressure..... **410 bar**
- Compensation..... **Not Compensated**
- Weight G 1/2"..... **2,9 Kg**
- Weight G 3/4"..... **3,3 Kg**
- Tamper proof cap..... **cod.9021030190**

**SCHEME 40 - 80**



**SCHEME 42 - 82**



**Note:**  
 - Pressure setting must be 30% higher than pressure induced by the load.  
 - Back pressure can influence the opening pressure (LHD15X-C is recommended for circuits with high back pressure)

	a	b	c	d	e	f
<b>04</b>	70	39,5	142	83	10,5	40
<b>05</b>	80	39,5	147	86	10,5	43

**Ordering code**

**H 1 5 0 6 N**       **S**    **0 0**

PILOT RATIO	
<b>40</b>	<b>4:1</b>
<b>42</b>	<b>4:1</b> ADJUSTABLE DUMP SCREW
<b>80</b>	<b>8:1</b>
<b>82</b>	<b>8:1</b> ADJUSTABLE DUMP SCREW

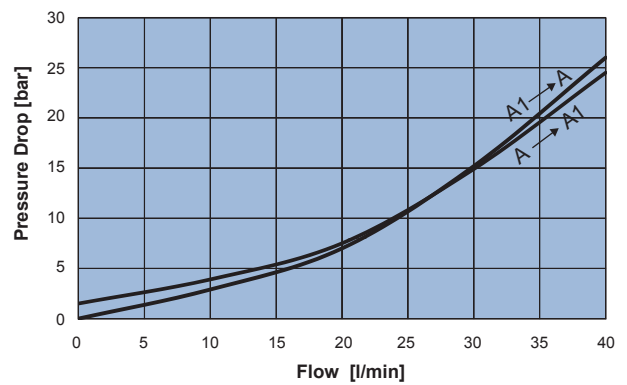
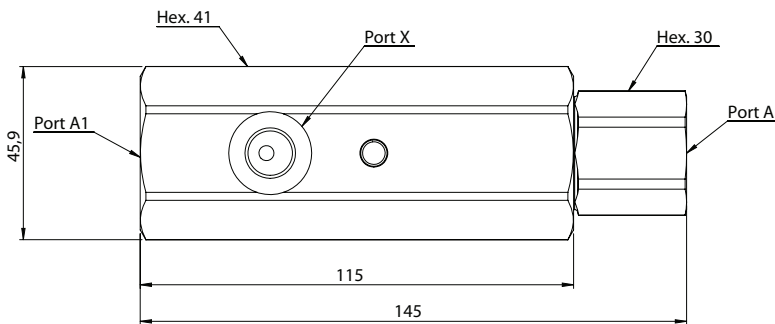
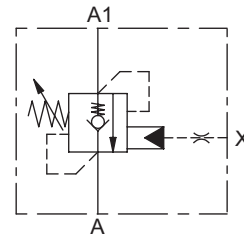
SPRINGS	rp 4:1		rp 8:1
	<b>2</b>	<b>4</b>	<b>4</b>
Setting range min.-max. [bar]	80 - 210	80 - 410	140 - 410
Pressure Increase [bar/turn]	40	72	72
Standard setting 4 l/min [bar]	200	350	350

PORTS	<b>04</b>	<b>05</b>
A,B	G 1/2"	G 3/4"
M	G 1/4"	G 1/4"
A1,B1	Ø 12	Ø 12



**SINGLE ACTING COUNTERBALANCE VALVE IN LINE WITH AXIAL DISCHARGE**

- Flow..... **40 l/min**
- Max working pressure..... **350 bar**
- Compensation..... **Not Compensated**
- Weight..... **1,3 Kg**



**Note:**  
- Pressure setting must be 30% higher than pressure induced by the load.

**Ordering code**

**H 5 2 0 0 N**     **S**   **0 0**

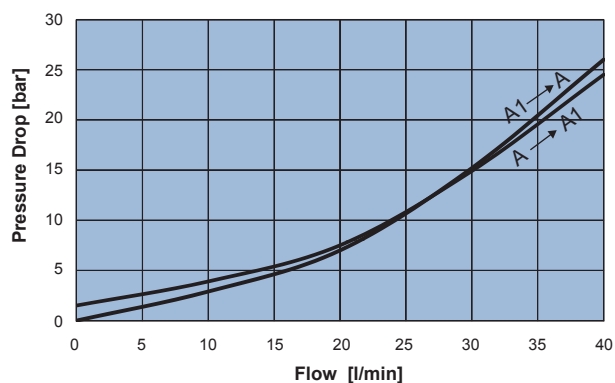
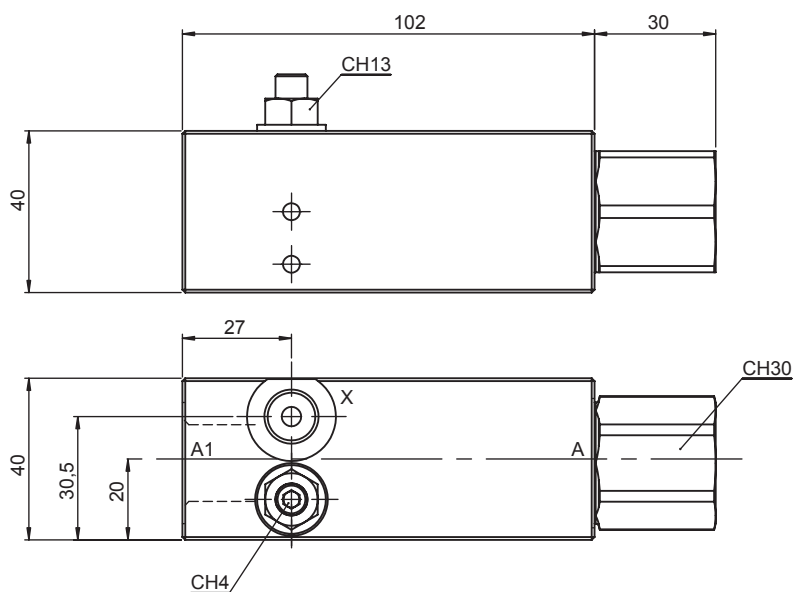
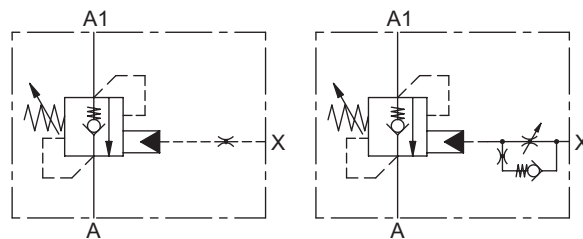
PILOT RATIO	
<b>90</b>	<b>9:1</b>

SPRINGS	<b>4</b>
Setting range min.-max. [bar]	130 - 450
Pressure Increase [bar/turn]	235
Standard setting 4 l/min [bar]	350

PORTS	<b>04</b>
A,A1	G 1/2"
X	G 1/4"

**SINGLE ACTING COUNTERBALANCE VALVE IN LINE WITH AXIAL DISCHARGE**

- Flow..... **40 l/min**
- Max working pressure..... **350 bar**
- Compensation..... **Not Compensated**
- Weight..... **1,2 Kg**



**Note:**  
- Pressure setting must be 30% higher than pressure induced by the load.

**Ordering code**

**H 5 2 0 1 N**     **S**     **0 0**

PILOT RATIO	
<b>40</b>	<b>4:1</b>
<b>42</b>	<b>4:1</b> + ADJUSTABLE DUMP SCREW

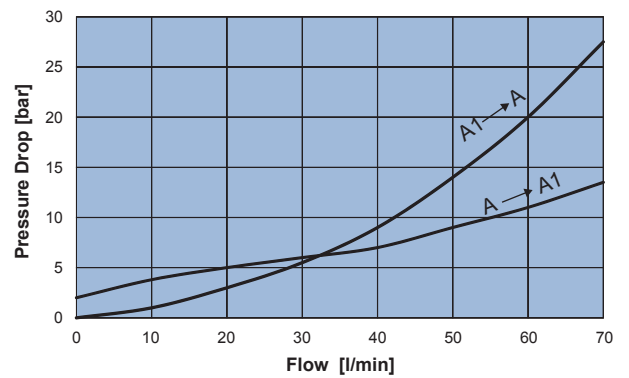
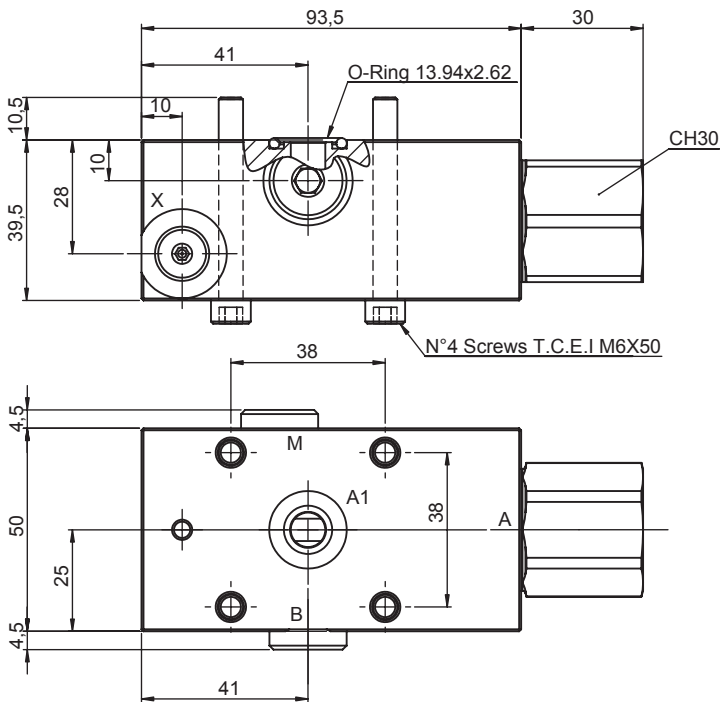
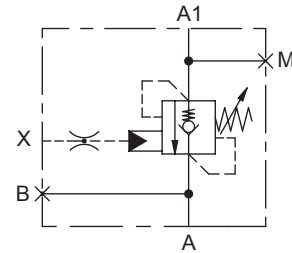
SPRINGS	<b>3</b>
Setting range min.-max. [bar]	211 - 350
Pressure Increase [bar/turn]	120
Standard setting 4 l/min [bar]	350

PORTS	<b>04</b>
A,A1	G 1/2"
X	G 1/4"



**SINGLE ACTING COUNTERBALANCE VALVE FLANGED 38x38 WITH AXIAL DISCHARGE**

- Flow..... **70 l/min**
- Max working pressure..... **350 bar**
- Compensation..... **Not Compensated**
- Weight..... **1,5 Kg**



**Note:**  
 - Pressure setting must be 30% higher than pressure induced by the load.  
 - Back pressure can influence the opening pressure (LHD05X-C is recommended for circuits with high back pressure)

**Ordering code**

**H 5 2 0 2 N**     **S**   **0 0**

RAPPORTO DI PILOTAGGIO	
<b>40</b>	<b>4:1</b>

MOLLE	<b>3</b>
Setting range min.-max. [bar]	211 - 350
Pressure Increase [bar/turn]	120
Standard setting 4 l/min [bar]	350

ATTACCHI	<b>04</b>
A	G 1/2"
B,X,M	G 1/4"
A1	Ø 8.5