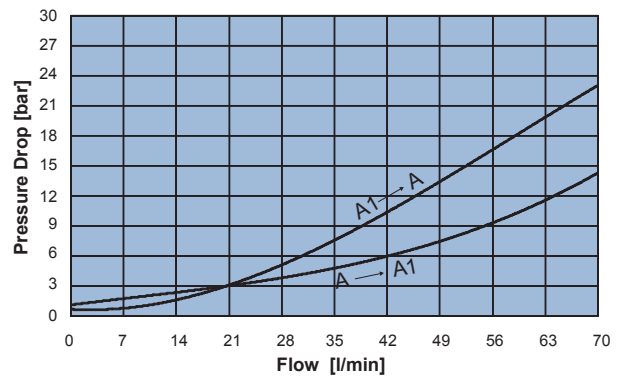
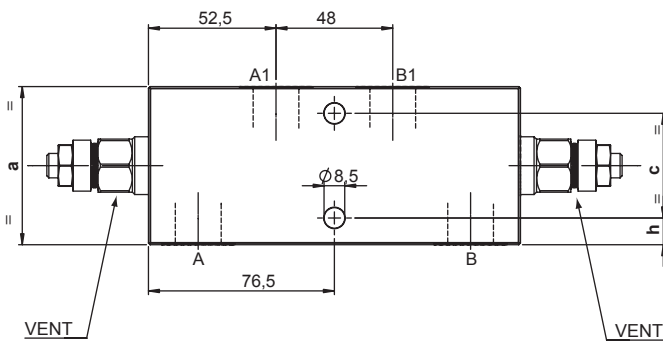
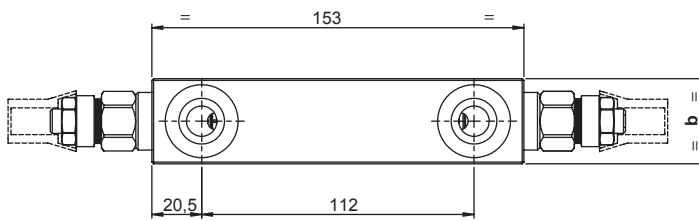
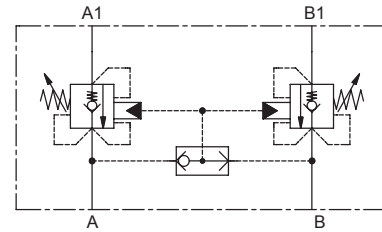


DOUBLE ACTING RELIEF COMPENSATED COUNTERBALANCE VALVE

- Flow **70 l/min**
- Max working pressure **350 bar**
- Compensation **Relief Compensated**
- Weight G 3/8" **1,9 Kg**
- Weight G 1/2" **2,6 Kg**
- Tamper proof cap. **cod. 4029250280**



Note:
- Pressure setting must be 30% higher than pressure induced by the load.

	a	b	c	h
03	55	30	38	8,5
04	65	35	43	11

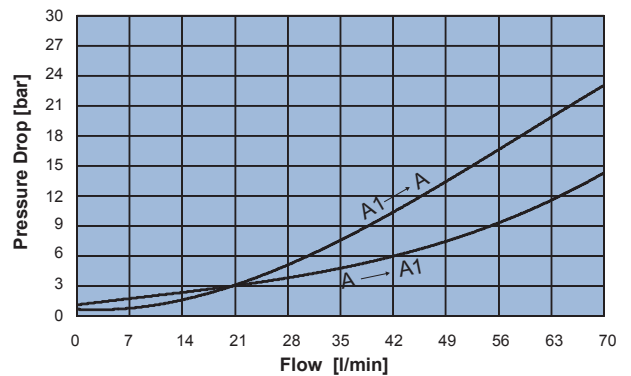
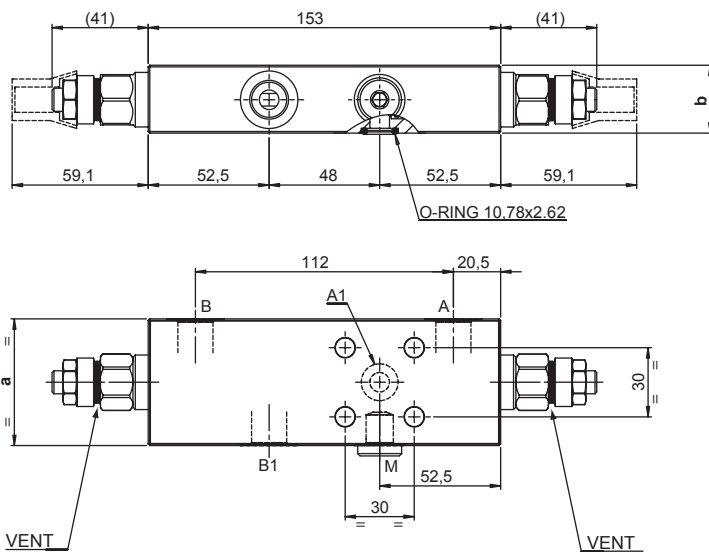
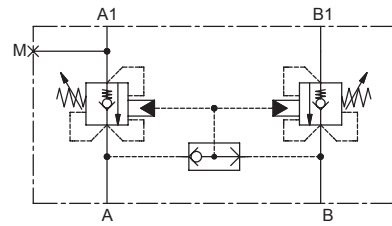
Ordering code

H 5 3 6 0 S **S** **0 0**

PILOT RATIO		SPRINGS		PORTS	
40	4:1	2	3	03	04
		Setting range min.-max. [bar]	60 - 210 120 - 350	A,B,A1,B1	G 3/8" G 1/2"
		Pressure Increase [bar/turn]	93 170		
		Standard setting 4 l/min [bar]	200 350		

DOUBLE ACTING RELIEF COMPENSATED COUNTERBALANCE VALVE - A1 FLANGED 30x30

- Flow..... **.70 l/min**
- Max working pressure..... **350 bar**
- Compensation..... **Relief Compensated**
- Weight G 3/8"..... **1,9 Kg**
- Weight G 1/2"..... **2,6 Kg**
- Tamper proof cap..... **cod. 4029250280**



Note:
- Pressure setting must be 30% higher than pressure induced by the load.

	a	b
03	55	29,5
04	65	34,5

Ordering code

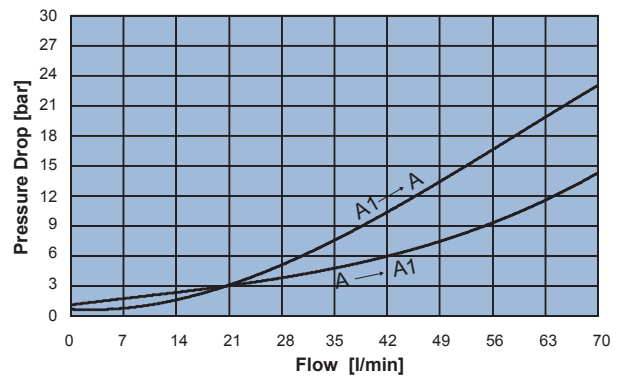
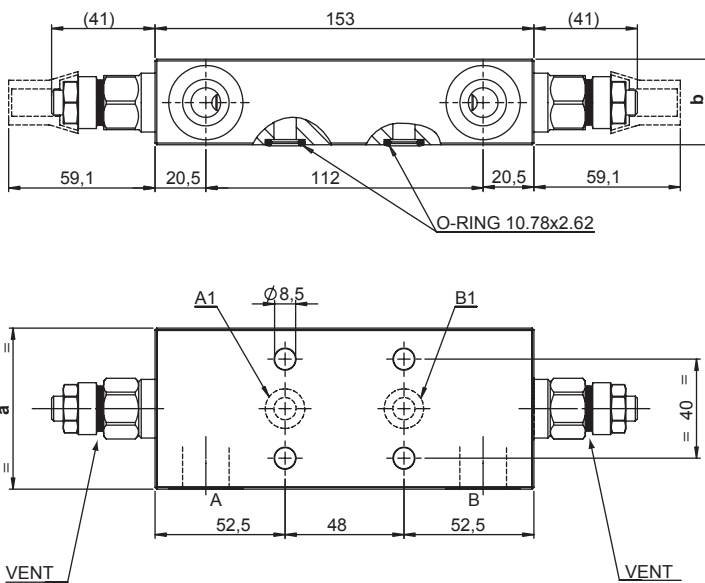
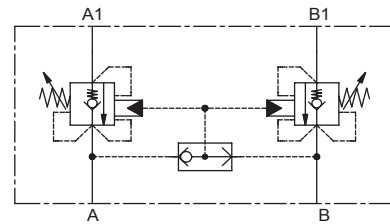
H 5 3 6 1 S **S** **0 0**

PILOT RATIO		SPRINGS			PORTS		
40	4:1	2	3		03	04	
		Setting range min.-max. [bar]	60 - 210	120 - 350	A,B,B1	G 3/8"	G 1/2"
		Pressure Increase [bar/turn]	93	170	A1	Ø 9	Ø 9
		Standard setting 4 l/min [bar]	200	350	M	G 1/4"	G 1/4"



DOUBLE ACTING RELIEF COMPENSATED COUNTERBALANCE VALVE - A1/B1 FLANGED 40x48

- Flow..... **70 l/min**
- Max working pressure..... **350 bar**
- Compensation..... **Relief Compensated**
- Weight G 3/8"..... **1,9 Kg**
- Weight G 1/2"..... **2,6 Kg**
- Tamper proof cap..... **cod. 4029250280**



Note:
- Pressure setting must be 30% higher than pressure induced by the load.

	a	b
03	55	29,5
04	65	34,5

Ordering code

H 5 3 6 2 S **S** **0 0**

PILOT RATIO		SPRINGS		PORTS	
40	4:1	2	3	03	04
		Setting range min.-max. [bar]	60 - 210 120 - 350	A,B	G 3/8" G 1/2"
		Pressure Increase [bar/turn]	93 170	A1,B1	Ø 9 Ø 9
		Standard setting 4 l/min [bar]	200 350		