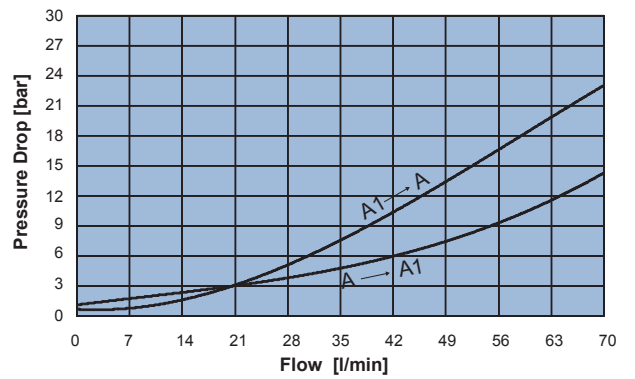
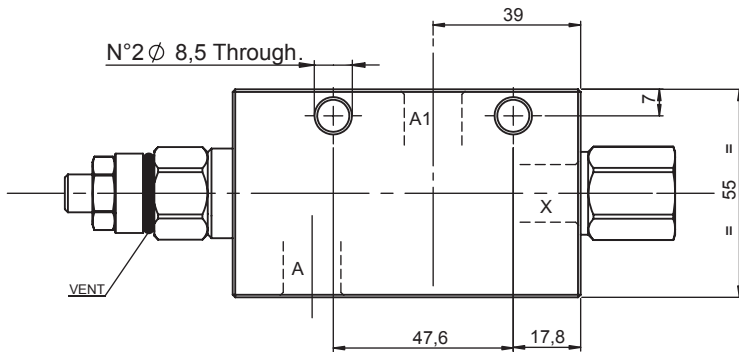
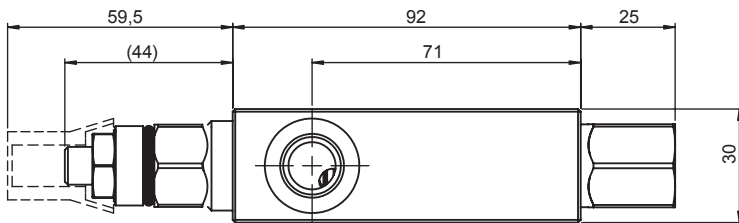
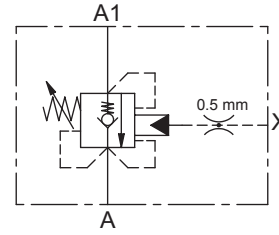


SINGLE ACTING RELIEF COMPENSATED COUNTERBALANCE VALVE

- Flow..... **70 l/min**
- Max working pressure..... **350 bar**
- Compensation..... **Relief Compensated**
- Weight..... **1,2 Kg**
- Tamper proof cap..... **cod. 4029250280**



Note:
- Pressure setting must be 30% higher than pressure induced by the load.

Ordering code

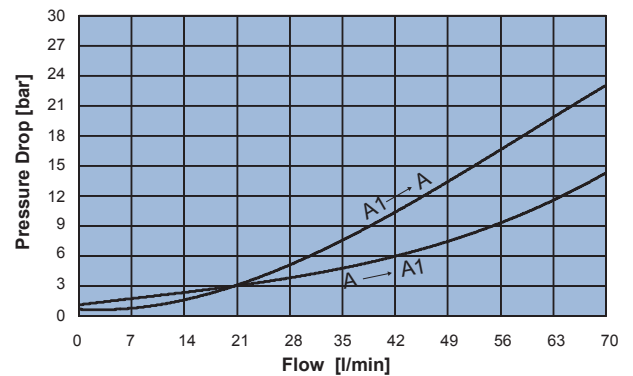
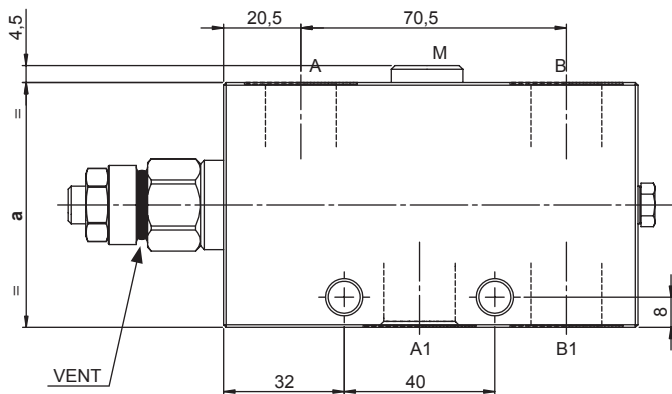
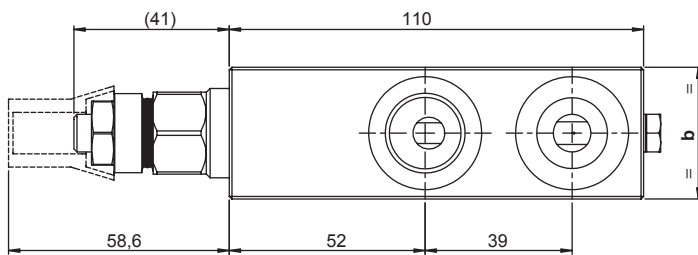
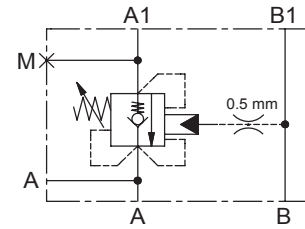
H 5 3 0 1 S **S** **0 0**

PILOT RATIO		SPRINGS		PORTS	
40	4:1	2	3	03	
				A,A1,X G 3/8"	
		Setting range min.-max. [bar]	60 - 210	120 - 350	
		Pressure Increase [bar/turn]	93	170	
		Standard setting 4 l/min [bar]	200	350	



SINGLE ACTING RELIEF COMPENSATED COUNTERBALANCE VALVE

- Flow..... **70 l/min**
- Max working pressure..... **350 bar**
- Compensation..... **Relief Compensated**
- Weight G 3/8"..... **1,3 Kg**
- Weight G 1/2"..... **1,8 Kg**
- Tamper proof cap..... **cod. 4029250280**



Note:
- Pressure setting must be 30% higher than pressure induced by the load.

	a	b
03	55	30
04	65	35

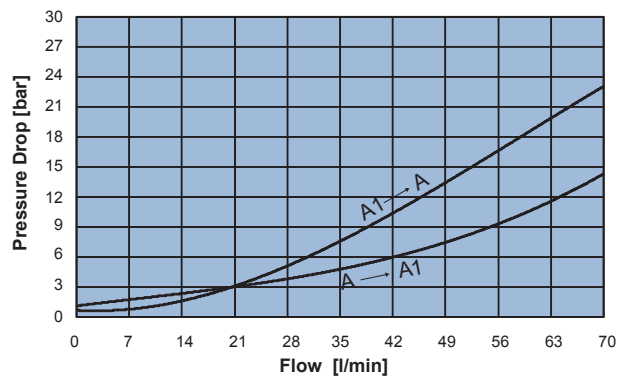
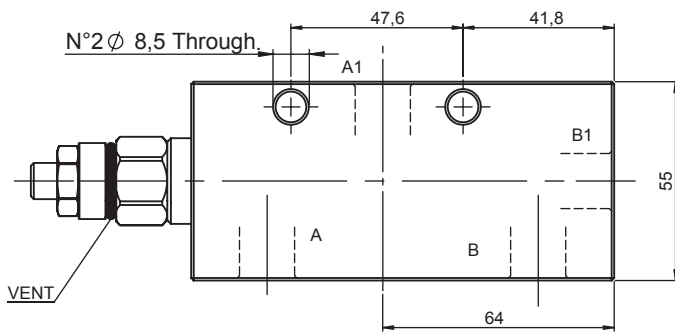
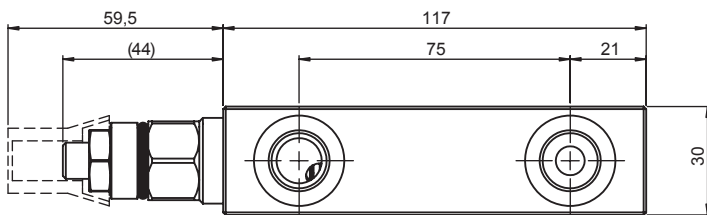
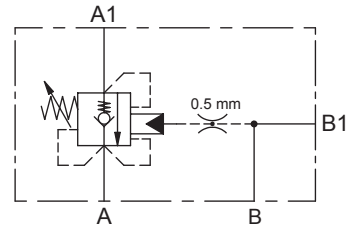
Ordering code

H 5 3 0 4 S **S** **0 0**

PILOT RATIO		SPRINGS		PORTS	
40	4:1	2	3	03	04
		Setting range min.-max. [bar]	60 - 210 120 - 350	A,A1,B,B1	G 3/8" G 1/2"
		Pressure Increase [bar/turn]	93 170	M	G 1/4" G 1/4"
		Standard setting 4 l/min [bar]	200 350		

SINGLE ACTING RELIEF COMPENSATED COUNTERBALANCE VALVE

- Flow..... **70 l/min**
- Max working pressure..... **210 bar**
- Compensation..... **Relief Compensated**
- Weight..... **1,8 Kg**
- Tamper proof cap..... **cod. 4029250280**



Note:
- Pressure setting must be 30% higher than pressure induced by the load.

Ordering code

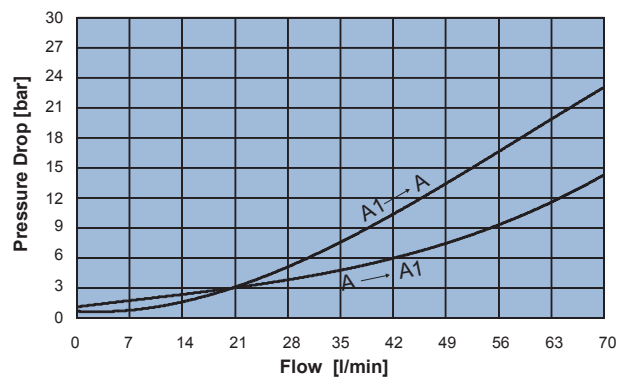
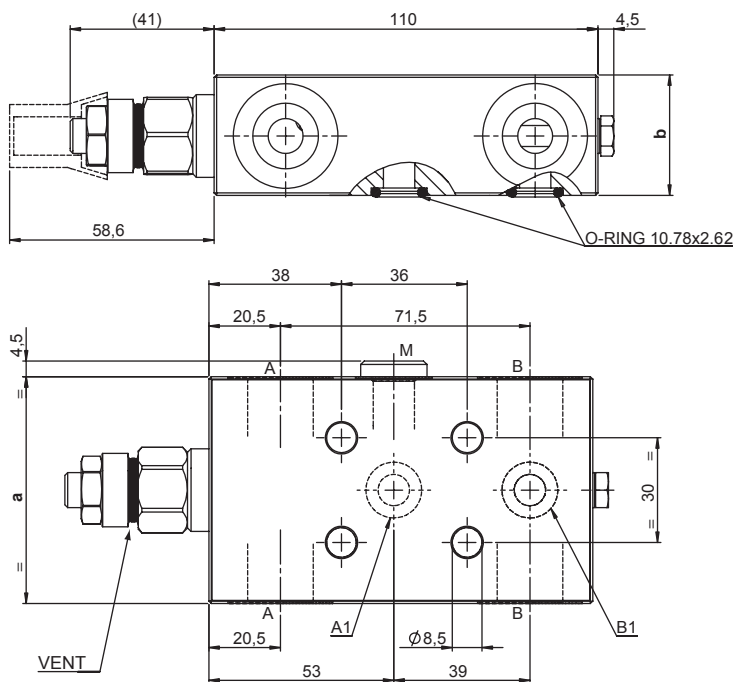
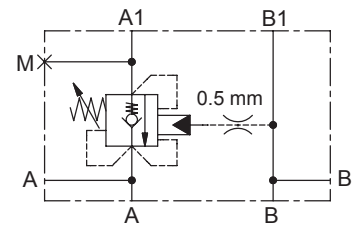
H 5 3 0 4 S **S** **0 0**

PILOT RATIO		SPRINGS		PORTS	
41	4:1	2	3	03	
				A,A1,B,B1 G 3/8"	
		Setting range min.-max. [bar]	60 - 210 120 - 350		
		Pressure Increase [bar/turn]	93 170		
		Standard setting 4 l/min [bar]	200 350		



SINGLE ACTING RELIEF COMPENSATED COUNTERBALANCE VALVE - A1/B1 FLANGED 30x36

- Flow **70 l/min**
- Max working pressure **350 bar**
- Compensation **Relief Compensated**
- Weight G 3/8" **1,5 Kg**
- Weight G 1/2" **1,8 Kg**
- Tamper proof cap **cod. 4029250280**



Note:
- Pressure setting must be 30% higher than pressure induced by the load.

	a	b
03	55	29,5
04	65	34,5

Ordering code

H 5 3 0 6 S **S** **0 0**

PILOT RATIO		PORTS		
40 4:1	SPRINGS	2	3	03 04
	Setting range min.-max. [bar]	60 - 210	120 - 350	A,B G 3/8" G 1/2"
	Pressure Increase [bar/turn]	93	170	A1,B1 $\phi 9$ $\phi 9$
	Standard setting 4 l/min [bar]	200	350	M G 1/4" G 1/4"

