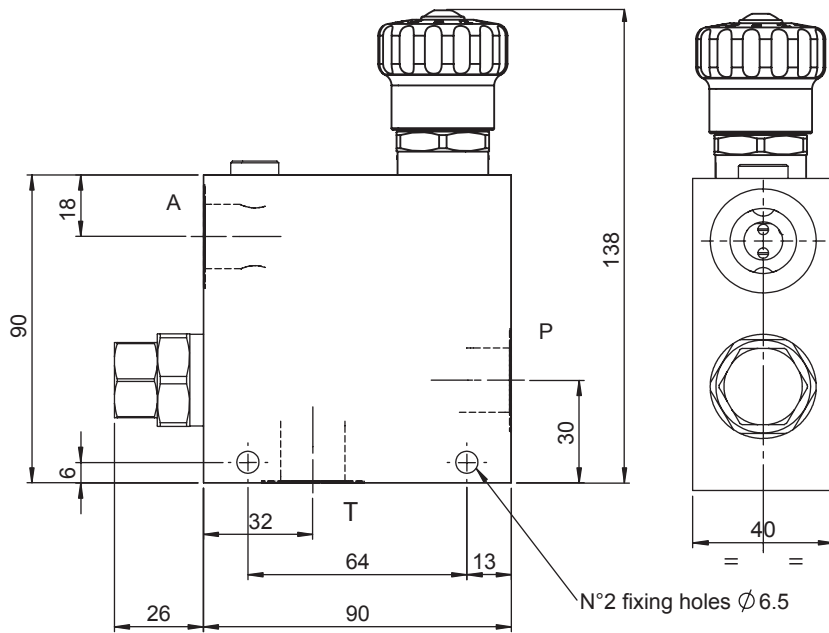
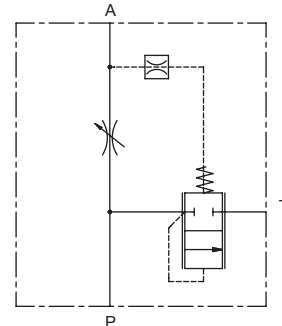



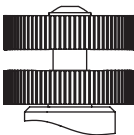
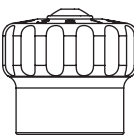
3 WAY FLOW CONTROL VALVE, MANUAL CONTROL

- Max regulated flow **50 l/min**
- Maximum flow **90 l/min**
- Max pressure P:A **350 bar**
- Seals **NBR**
- Weight **1,8 Kg**



Ordering code

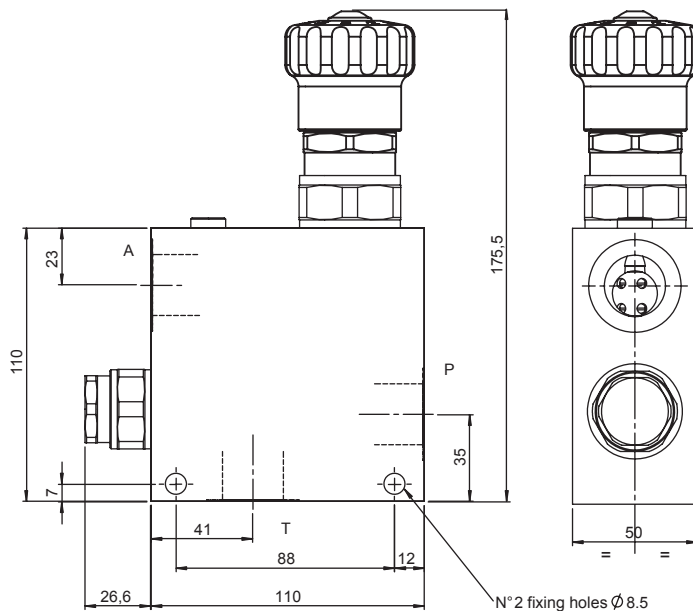
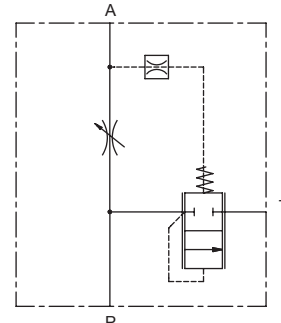
6 F 3 0 0 **0 0 S** **0 0 0**

0	4	5
		
Screw	Handknob	Friction lock hand knob

PORTS	03	04
A,P,T	G 3/8"	G 1/2"

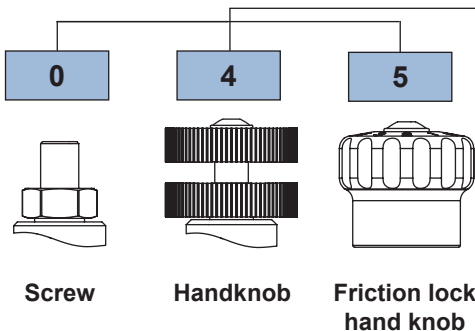
3 WAY FLOW CONTROL VALVE, MANUAL CONTROL

- Max regulated flow **90 l/min**
- Maximum flow **150 l/min**
- Max pressure P:A..... **350 bar**
- Seals..... **NBR**
- Weight **2 Kg**



Ordering code

6 F 3 0 0 [] 0 0 S [] 0 0 0

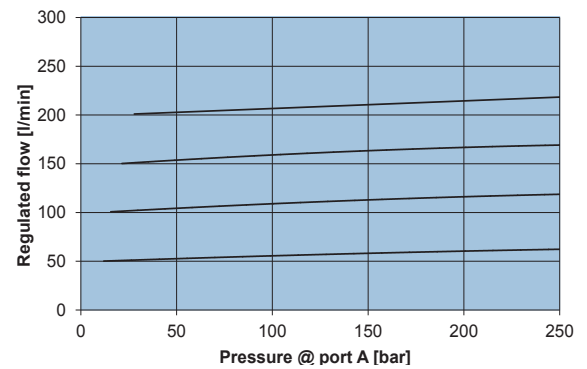
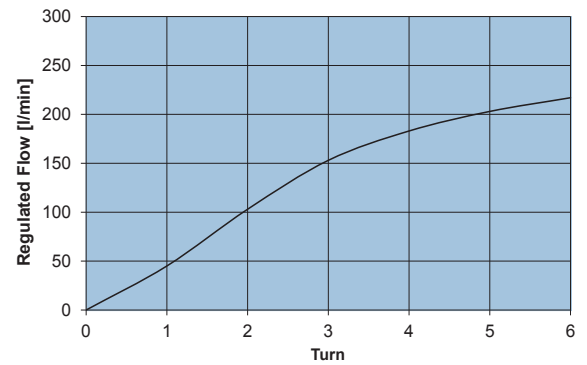
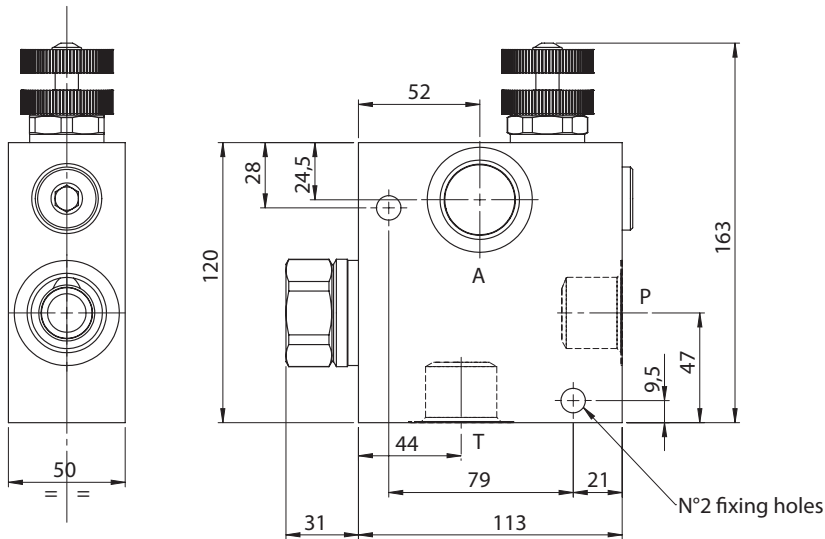
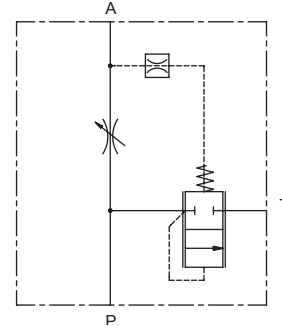


PORTS	05
A,P,T	G 3/4"

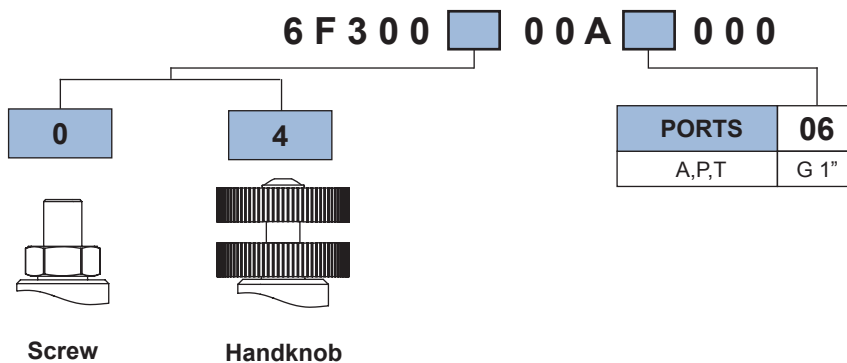


3 WAY FLOW CONTROL VALVE, MANUAL CONTROL

- Max regulated flow **200 l/min**
- Maximum flow **300 l/min**
- Max pressure P:A **210 bar**
- Seals **NBR and PTFE**
- Weight **2,3 Kg**

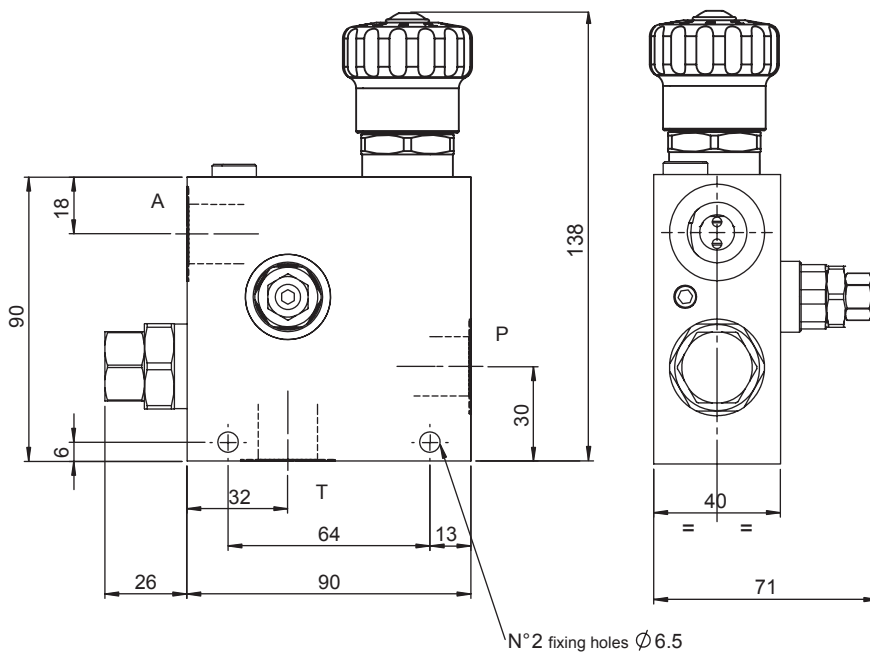
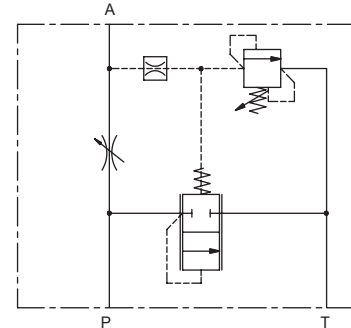


Ordering code



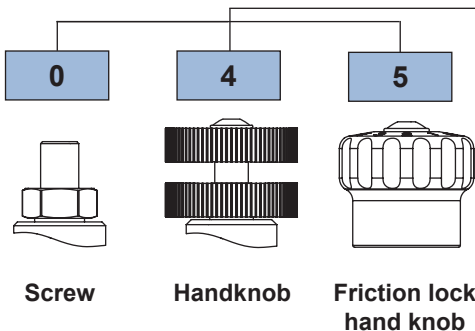
3 WAY FLOW CONTROL VALVE, MANUAL CONTROL AND PRESSURE RELIEF VALVE

- Max regulated flow **50 l/min**
- Maximum flow **90 l/min**
- Max pressure T **10 bar**
- Max pressure P:A **350 bar**
- Seals **NBR**
- Weight **2 Kg**



Ordering code

6 F 3 0 0 [] [] S [] 0 0 0



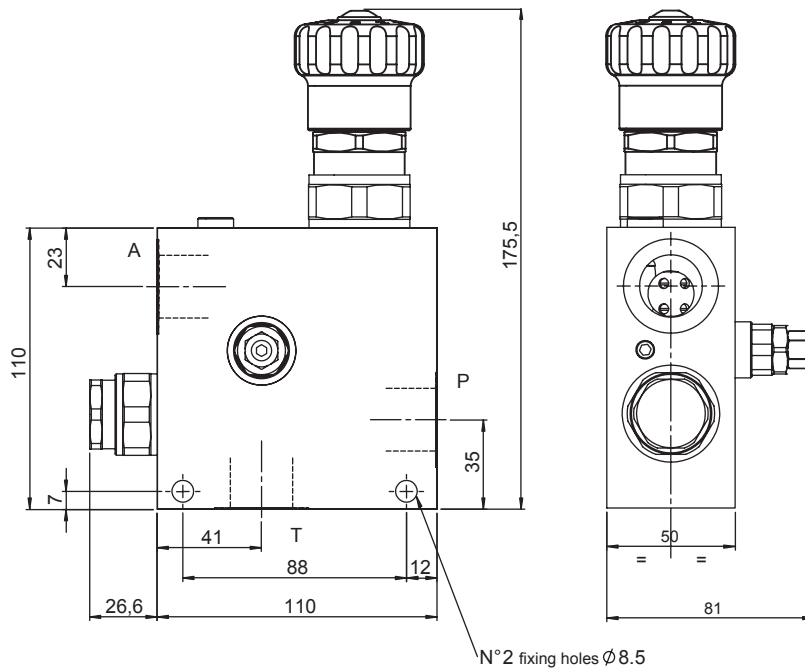
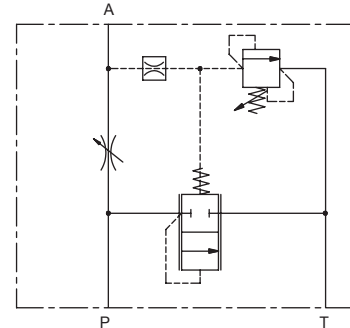
RELIEF VALVE	M2	M3
Setting range [bar]	40 - 220	50 - 350
Pressure increase [bar/turn]	34	63
Standard Setting 4 l/min [bar]	100	200

PORTS	03	04
A,P,T	G 3/8"	G 1/2"



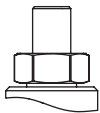
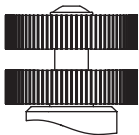
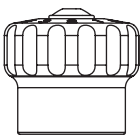
3 WAY FLOW CONTROL VALVE, MANUAL CONTROL AND PRESSURE RELIEF VALVE

- Max regulated flow **90 l/min**
- Maximum flow **150 l/min**
- Max pressure T **10 bar**
- Max pressure P:A **350 bar**
- Seals **NBR**
- Weight **2,2 Kg**



Ordering code

6 F 3 0 0 **S** **0 0 0**

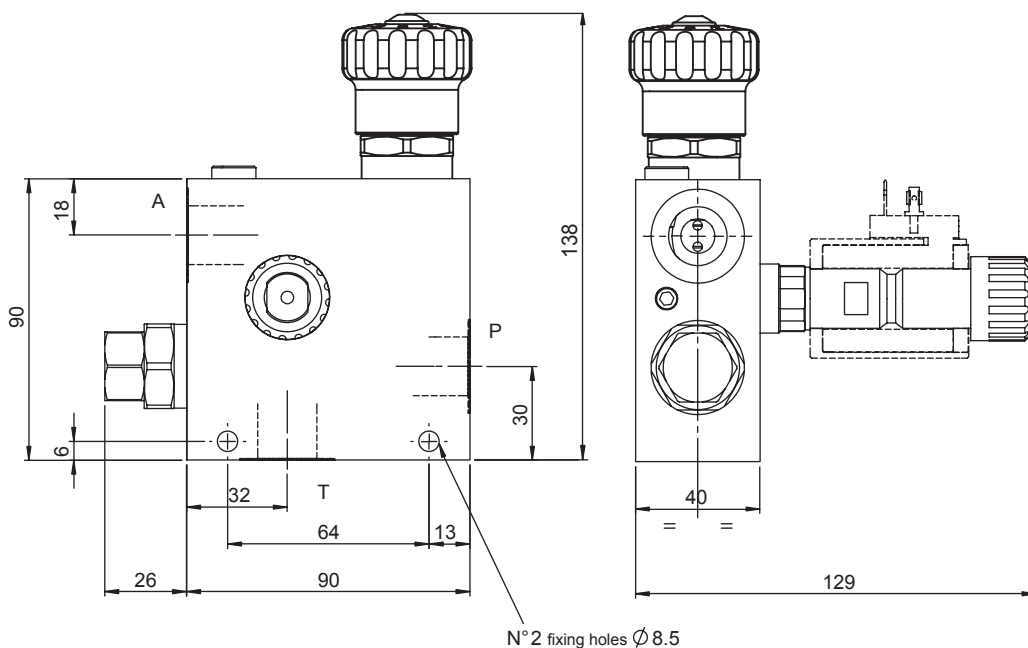
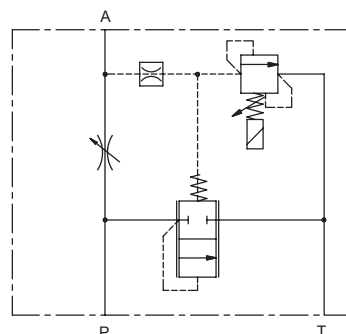
0	4	5
		
Screw	Handknob	Friction lock hand knob

RELIEF VALVE	M2	M3
Setting range [bar]	40 - 220	50 - 350
Pressure increase [bar/turn]	34	63
Standard Setting 4 l/min [bar]	100	200

PORTS	05
A,P,T	G 3/4"

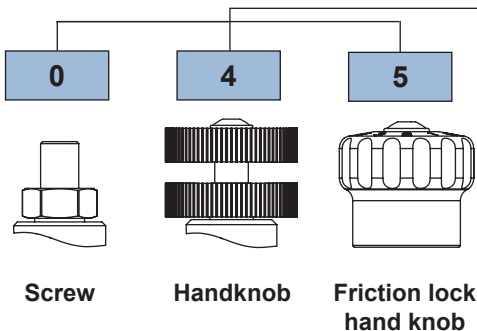
3 WAY FLOW CONTROL VALVE, MANUAL CONTROL & ELECTRO-PROPORTIONAL RELIEF VALVE

- Max regulated flow **50 l/min**
- Maximum flow **90 l/min**
- Max pressure T **10 bar**
- Max pressure P:A **350 bar**
- Seals **NBR**
- Max current at 12 Vcc **1800mA**
- Max current at 24 Vcc **900mA**
- PWM **120 Hz**
- Hysteresis **5%**
- Weight (with coil) **1,8 Kg**
- Ring nut tightening torque for coil: **5 Nm**
- Coil **09800** to be ordered separately (page 190)



Ordering code

6 F 3 0 0 [] [] S [] 0 0 0



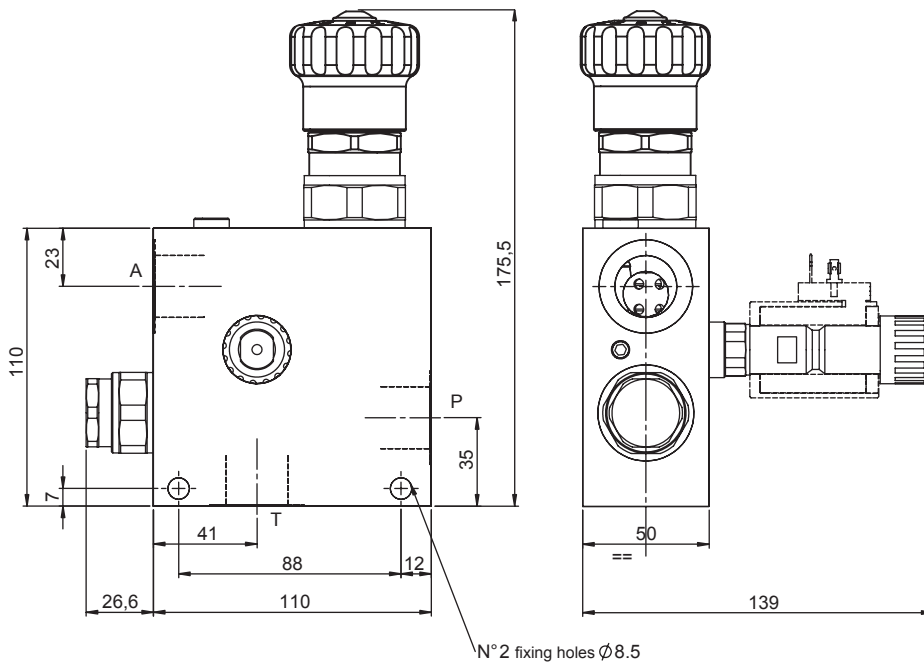
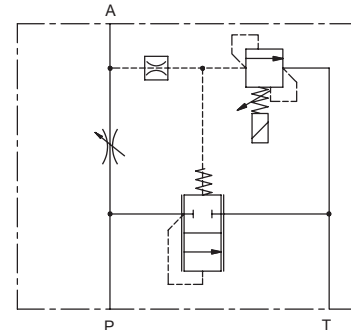
RELIEF VALVE	P2
Setting range [bar]	8 - 250

PORTS	03	04
A,P,T	G 3/8"	G 1/2"



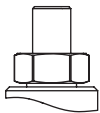
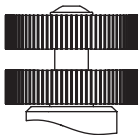
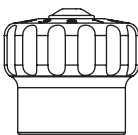
3 WAY FLOW CONTROL VALVE, MANUAL CONTROL & ELECTRO-PROPORTIONAL RELIEF VALVE

- Max regulated flow **90 l/min**
- Maximum flow **150 l/min**
- Max pressure T **10 bar**
- Max pressure P:A **350 bar**
- Seals **NBR**
- Max current at 12 Vcc **1800mA**
- Max current at 24 Vcc **900mA**
- PWM **120 Hz**
- Hysteresis **5%**
- Weight (with coil) **1,8 Kg**
- Ring nut tightening torque for coil: **5 Nm**
- Coil **09800** to be ordered separately (page 190)



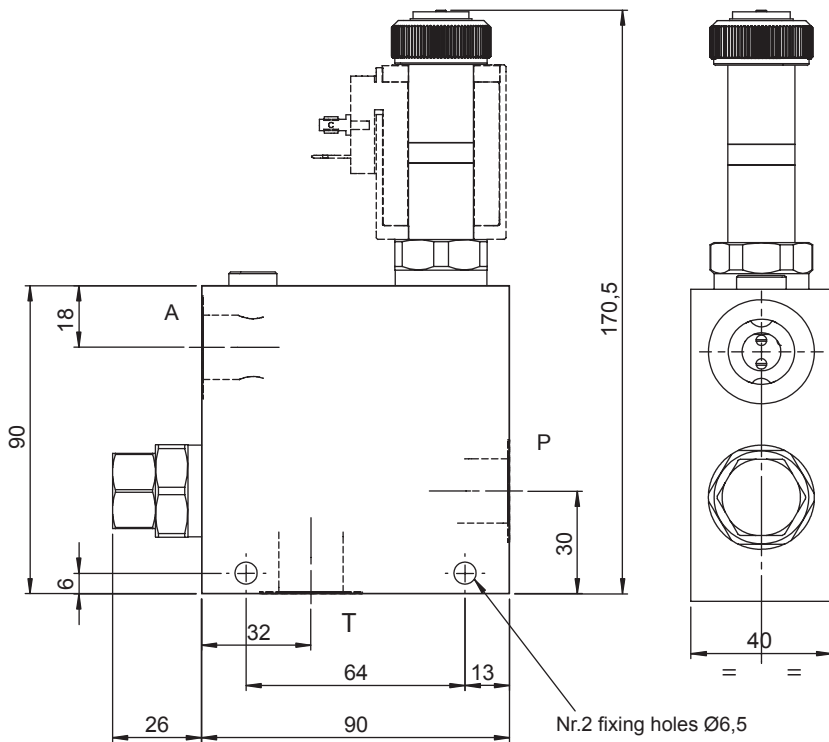
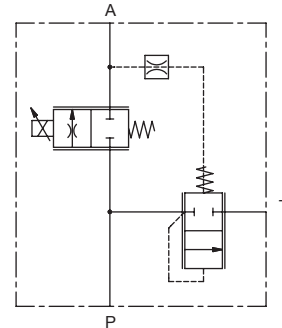
Ordering code

6 F 3 0 0 **S** **0 0 0**

0	4	5			
			RELIEF VALVE	P2	PORTS
Screw	Handknob	Friction lock hand knob	Setting range [bar]	8 - 250	05
					A,P,T G 3/4"

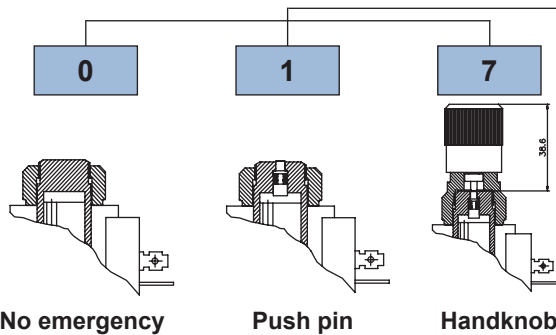
3 WAY FLOW CONTROL VALVE, ELECTRO-PROPORTIONAL CONTROL

- Max regulated flow **50 l/min**
- Maximum flow **90 l/min**
- Max pressure P:A **350 bar**
- Seals **NBR**
- Max current at 12 Vcc **1800mA**
- Max current at 24 Vcc **900mA**
- PWM **120 Hz**
- Hysteresis **5%**
- Weight (with coil) **1,8 Kg**
- Ring nut tightening torque for coil: **5 Nm**
- Coil **09800** to be ordered separately (page 190)



Ordering code

6 F 3 0 1 **0 0 S** **0 0 0**

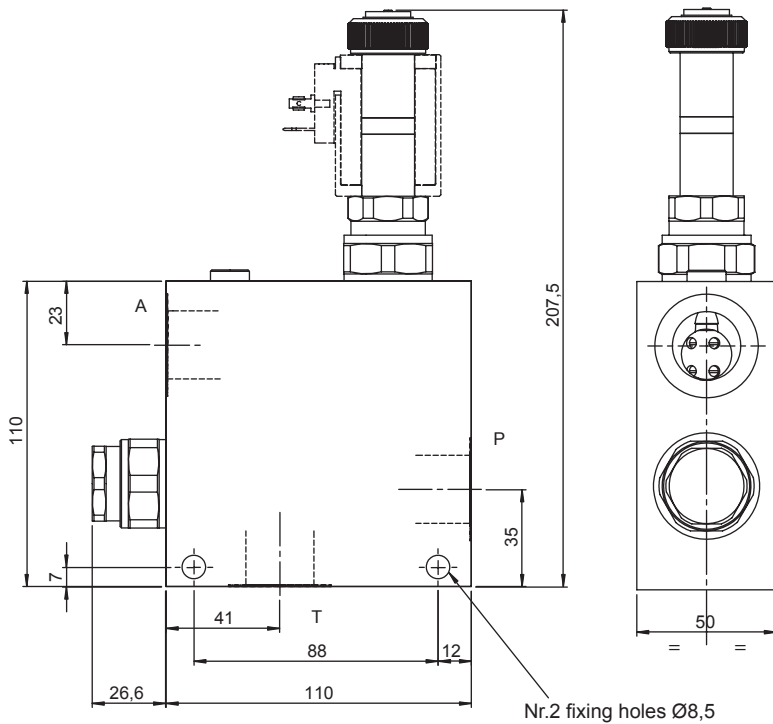
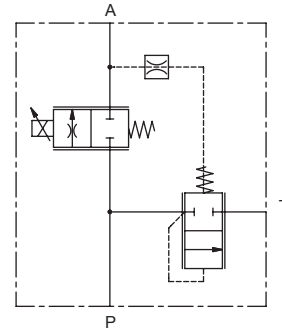


PORTS	03	04
A,P,T	G 3/8"	G 1/2"



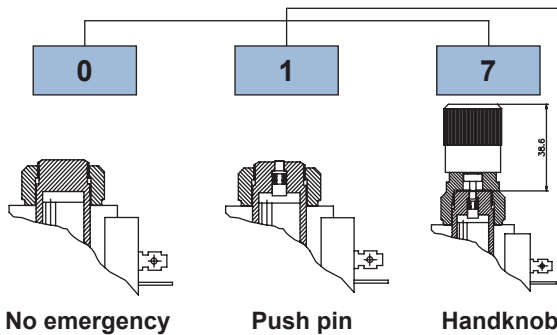
3 WAY FLOW CONTROL VALVE, ELECTRO-PROPORTIONAL CONTROL

- Max regulated flow **75 l/min**
- Maximum flow **150 l/min**
- Max pressure P:A **.350 bar**
- Seals **NBR**
- Max current at 12 Vcc **1800mA**
- Max current at 24 Vcc **.900mA**
- PWM **120 Hz**
- Hysteresis **5%**
- Weight (with coil) **2,2 Kg**
- Ring nut tightening torque for coil: **5 Nm**
- Coil **09800** to be ordered separately (page190)



Ordering code

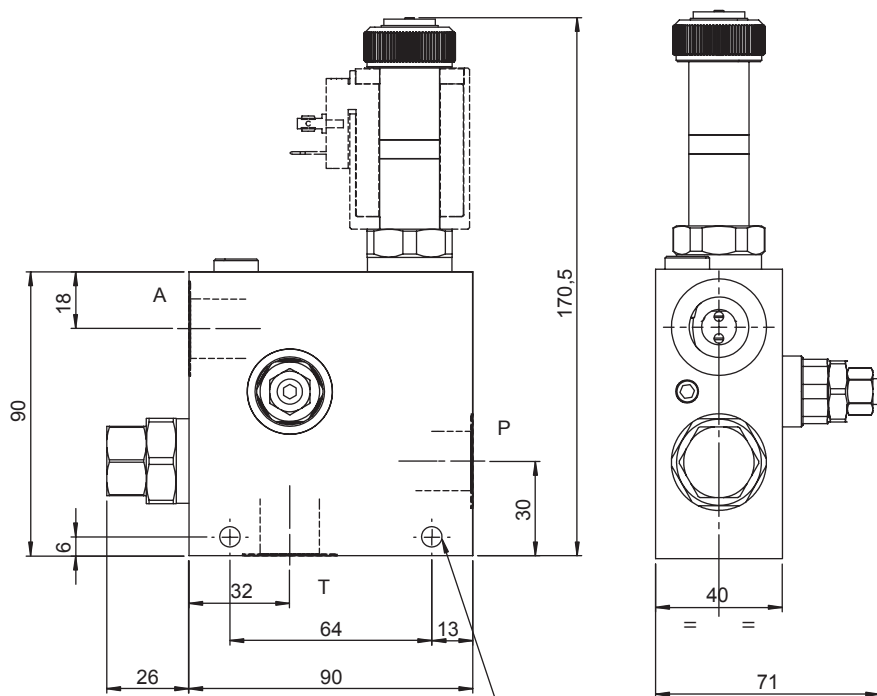
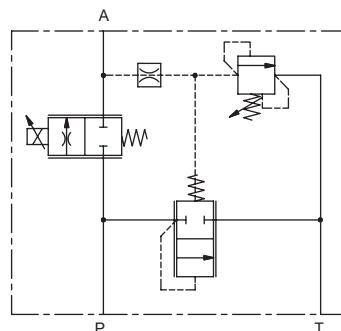
6 F 3 0 1 [] 0 0 S [] 0 0 0



PORTS	05
A,P,T	G 3/4"

3 WAY FLOW CONTROL VALVE, ELECTRO-PROPORTIONAL CONTROL & PRESSURE RELIEF VALVE

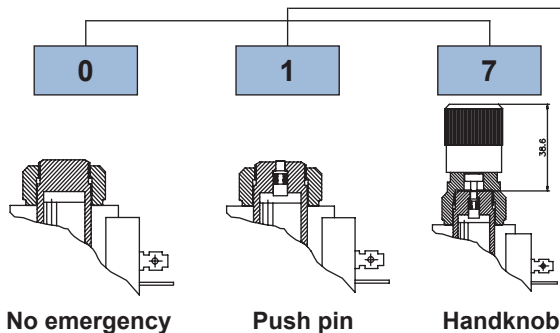
- Max regulated flow **50 l/min**
- Maximum flow **90 l/min**
- Max pressure T **10 bar**
- Max pressure P:A **350 bar**
- Seals **NBR**
- Max current at 12 Vcc **1800mA**
- Max current at 24 Vcc **900mA**
- PWM **120 Hz**
- Hysteresis **5%**
- Weight (with coil) **1,8 Kg**
- Ring nut tightening torque for coil: **5 Nm**
- Coil **09800** to be ordered separately (page190)



Nr.2 fixing holes Ø6,5

Ordering code

6 F 3 0 1 **S** **0 0 0**



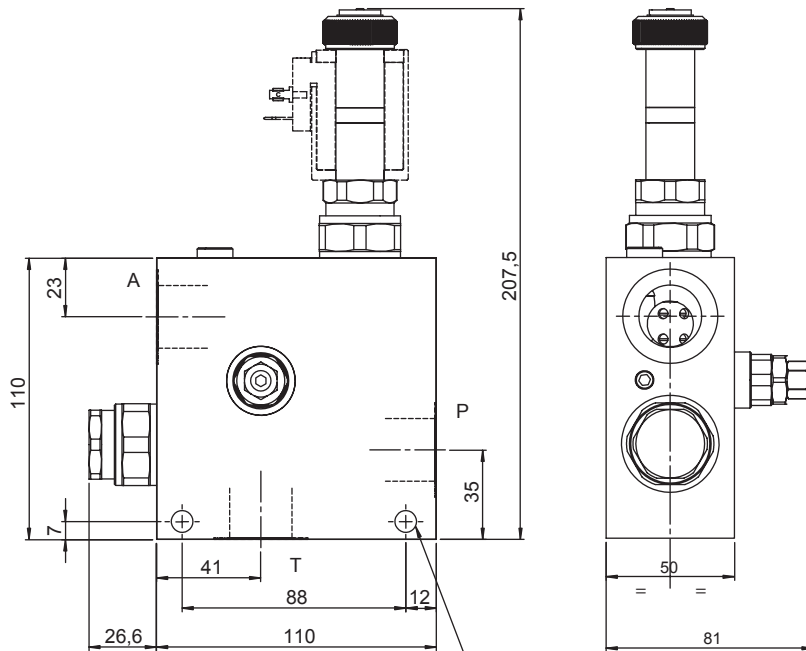
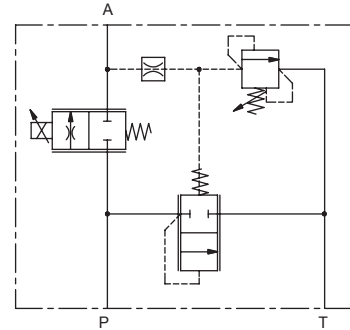
RELIEF VALVE	M2	M3
Setting range [bar]	40 - 220	50 - 350
Pressure increase [bar/turn]	34	63
Standard Setting 4 l/min [bar]	100	200

PORTS	03	04
A,P,T	G 3/8"	G 1/2"



3 WAY FLOW CONTROL VALVE, ELECTRO-PROPORTIONAL CONTROL & PRESSURE RELIEF VALVE

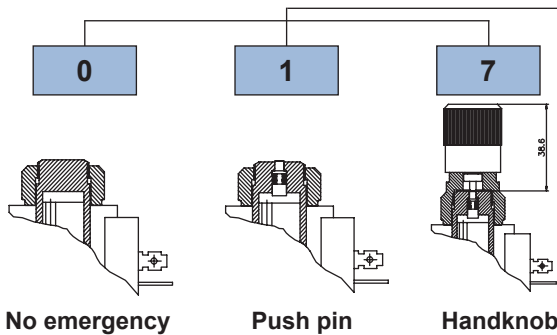
- Max regulated flow **75 l/min**
- Maximum flow **150 l/min**
- Max pressure T **10 bar**
- Max pressure P:A **350 bar**
- Seals **NBR**
- Max current at 12 Vcc **1800mA**
- Max current at 24 Vcc **900mA**
- PWM **120 Hz**
- Hysteresis **5%**
- Weight (with coil) **1,8 Kg**
- Ring nut tightening torque for coil: **5 Nm**
- Coil **09800** to be ordered separately (page 190)



Nr.2 fixing holes Ø8,5

Ordering code

6 F 3 0 1 **S** **0 0 0**

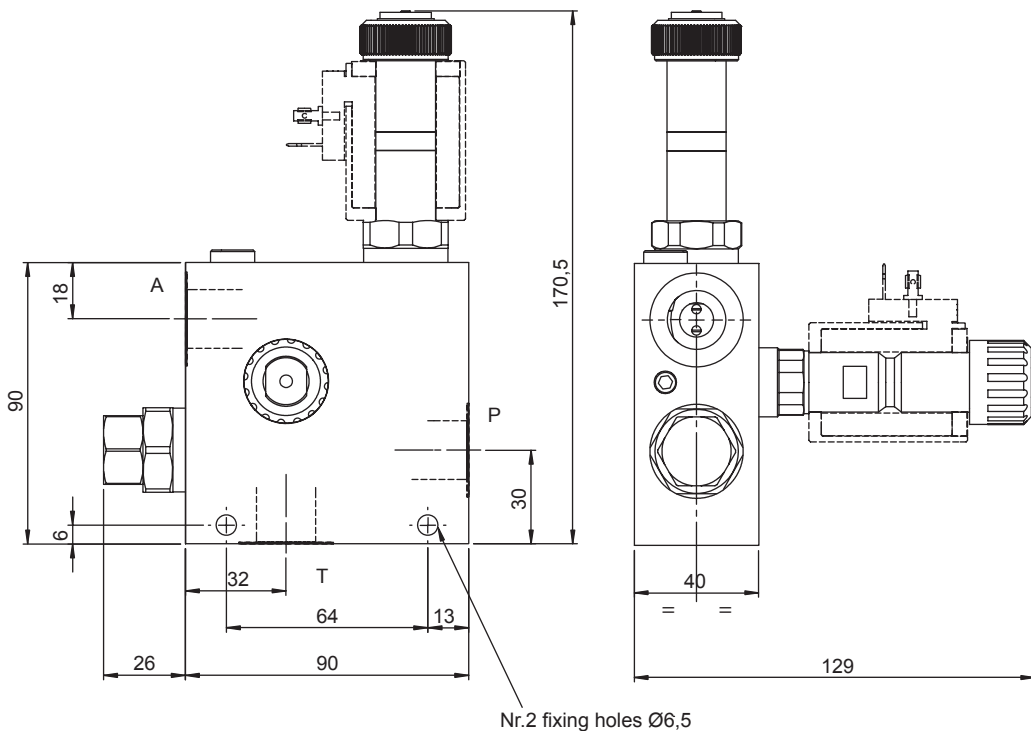
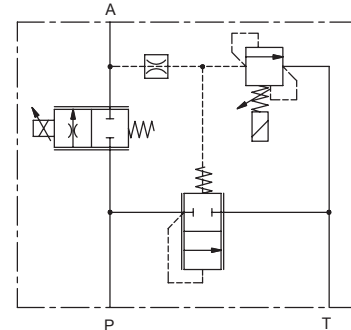


RELIEF VALVE	M2	M3
Setting range [bar]	40 - 220	50 - 350
Pressure increase [bar/turn]	34	63
Standard Setting 4 l/min [bar]	100	200

PORTS	05
A,P,T	G 3/4"

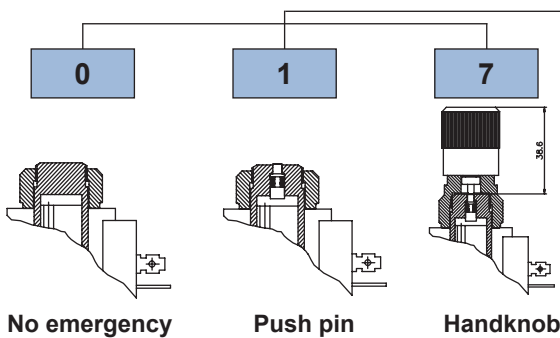
ELECTRO-PROPORTIONAL 3 WAY FLOW CONTROL & RELIEF VALVE

- Max regulated flow **50 l/min**
- Maximum flow **90 l/min**
- Max pressure T **10 bar**
- Max pressure P:A **350 bar**
- Seals **NBR**
- Max current at 12 Vcc **1800mA**
- Max current at 24 Vcc **900mA**
- PWM **120 Hz**
- Hysteresis **5%**
- Weight (with coil) **1,8 Kg**
- Ring nut tightening torque for coil: **5 Nm**
- Coil **09800** to be ordered separately (page 190)



Ordering code

6 F 3 0 1 **S** **0 0 0**



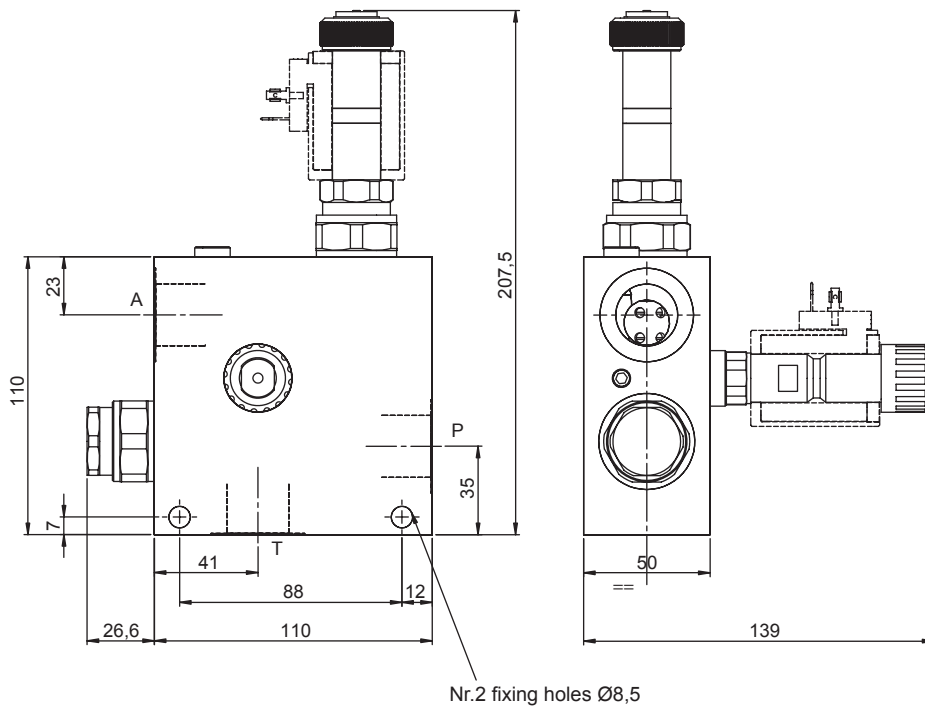
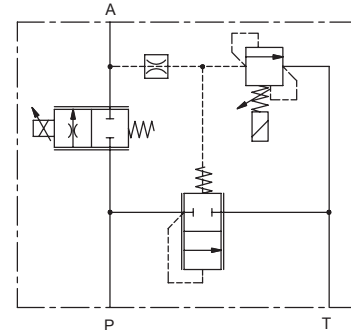
RELIEF VALVE	P2
Setting range [bar]	8 - 250

PORTS	03	04
A,P,T	G 3/8"	G 1/2"



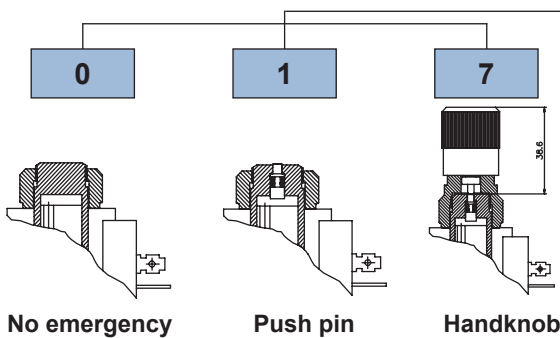
ELECTRO-PROPORTIONAL 3 WAY FLOW CONTROL & RELIEF VALVE

- Max regulated flow **75 l/min**
- Maximum flow **150 l/min**
- Max pressure T **10 bar**
- Max pressure P:A **350 bar**
- Seals **NBR**
- Max current at 12 Vcc **1800mA**
- Max current at 24 Vcc **900mA**
- PWM **120 Hz**
- Hysteresis **5%**
- Weight (with coil) **1,8 Kg**
- Ring nut tightening torque for coil: **5 Nm**
- Coil **09800** to be ordered separately (page 190)



Ordering code

6 F 3 0 1 **S** **0 0 0**



RELIEF VALVE	P2
Setting range [bar]	8 - 250

PORTS	05
A,P,T	G 3/4"

