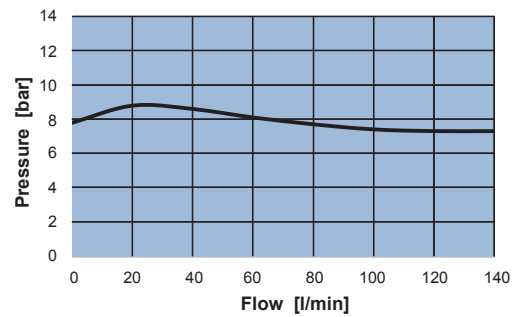
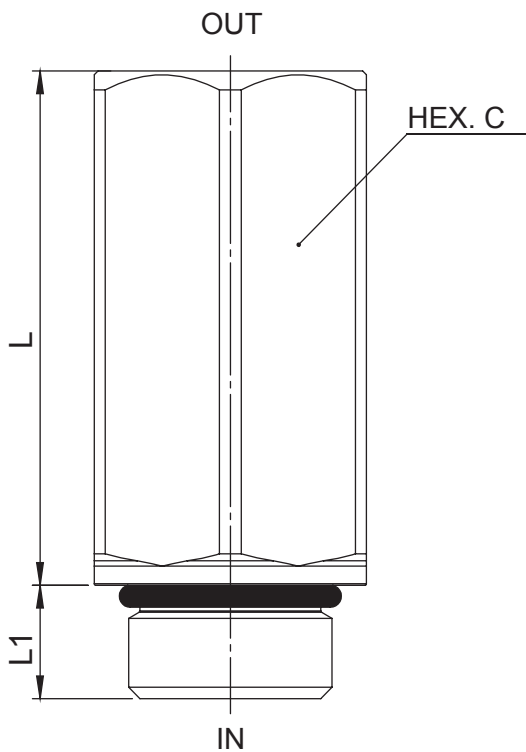
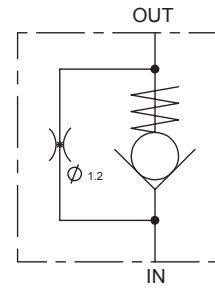


**CHECK VALVE M/F WITH BY-PASS ORIFICE**

- Max pressure..... **350 bar**
- Max flow. . . . . **130 l/min**
- Seals..... **NBR**
- Cartridge tightening torque:..... **150 Nm**
- Weight..... **0,45 Kg**



**Ordering code**

**6 D 7 1 0**     **1 2 0 0**

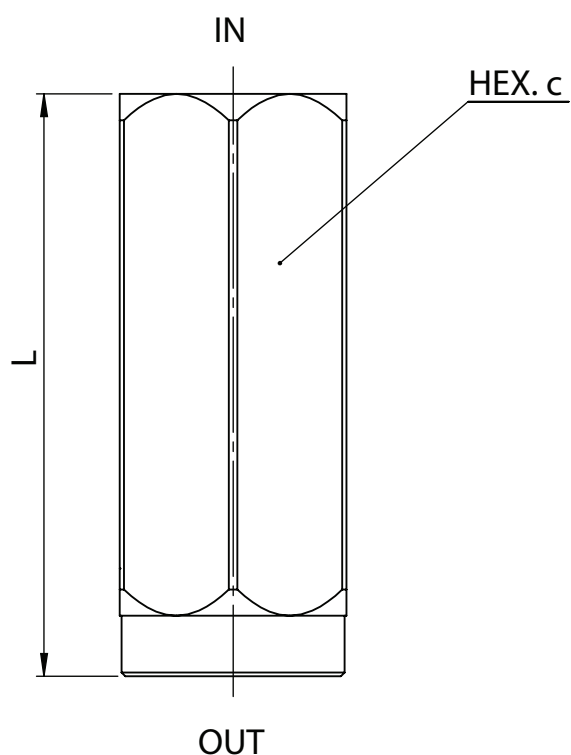
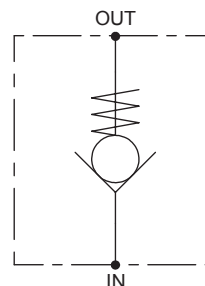
PORTS				C	L1	L
<b>55</b>	<b>SAE 12</b>	36	15	68		

SPRING	
<b>C</b>	7.8 bar

**CHECK VALVE F/F**

Ports IN-OUT	Max flow	Max pressure	c	L	Weight
<b>BSP</b>	<b>l/min</b>	<b>bar</b>	<b>mm</b>	<b>mm</b>	<b>Kg</b>
<b>G 1/2"</b>	<b>70</b>	<b>350</b>	<b>30</b>	<b>77</b>	<b>0,322</b>
<b>G 3/4"</b>	<b>110</b>	<b>350</b>	<b>36</b>	<b>88</b>	<b>0,492</b>
<b>G 1"</b>	<b>160</b>	<b>350</b>	<b>41</b>	<b>105</b>	<b>0,676</b>
<b>G 1-1/4"</b>	<b>250</b>	<b>300</b>	<b>55</b>	<b>135</b>	<b>1,646</b>



**Ordering code**

**6 D 7 2 0**       **0 0 0 0**

PORTS		SPRING	
04	G 1/2"	C	8 bar
05	G 3/4"		
06	G 1"		
07	G 1-1/4"		

