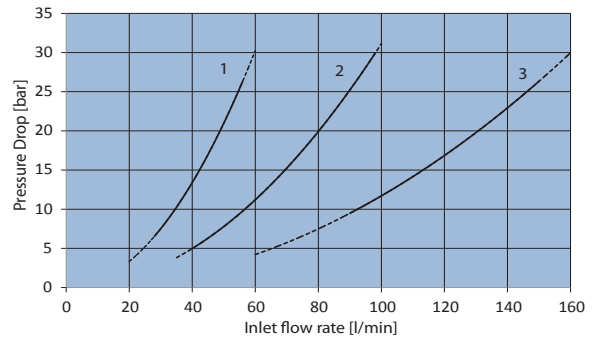
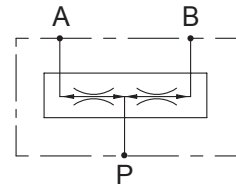
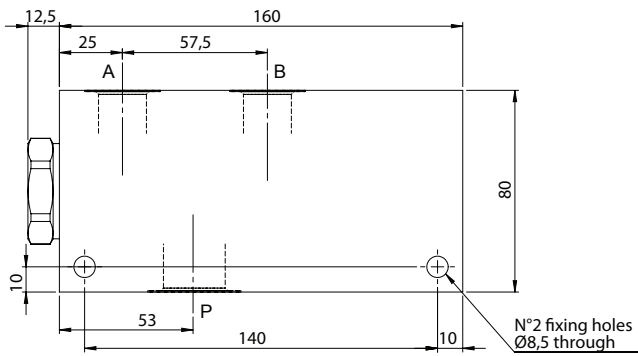


FLOW DIVIDER AND COMBINER VALVE

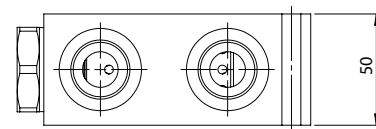
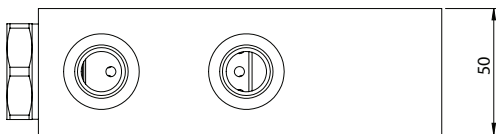
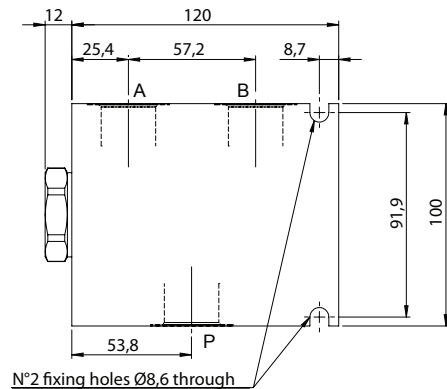
- Flow.....150 l/min
- Max working pressure.....250 bar
- Division ratio.....50% ÷ 50%
- Tolerance.....< +/-3%
- Weight (layout 0).....1,90 Kg
- Weight (layout 1).....1,75 Kg



LAYOUT 0



LAYOUT 1



Ordering code

6 D 8 2 5 0 **A** **N 0 0**

SETTING RANGE	1	2	3
Qmin ÷ Qmax l/min	28 ÷ 55	56 ÷ 95	90 ÷ 150

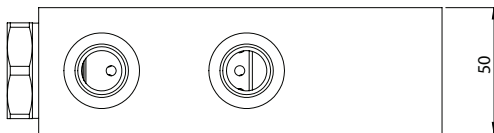
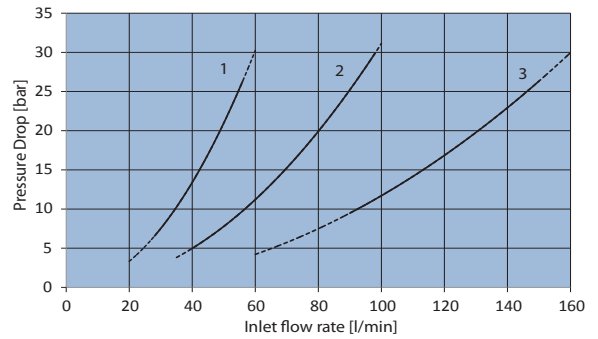
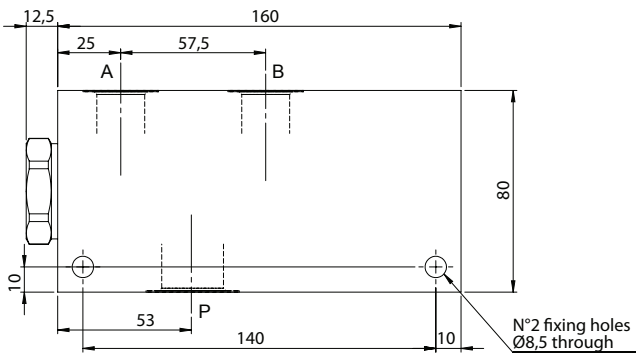
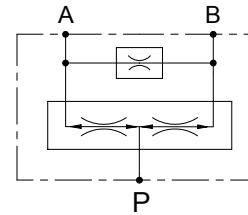
LAYOUT	0	1
--------	---	---

PORTS	54	55	65	66
P	G 3/4"	G 3/4"	G 1"	G 1"
A,B	G 1/2"	G 3/4"	G 3/4"	G 1"



FLOW DIVIDER AND COMBINER VALVE WITH EQUALIZING ORIFICE

- Flow **150 l/min**
- Max working pressure **250 bar**
- Division ratio **50% ÷ 50%**
- Tolerance **< +/-3%**
- Weight **1,90 Kg**



Ordering code

6 D 8 2 5 **0 A 0** **G**

SETTING RANGE	1	2	3
Qmin ÷ Qmax l/min	28 ÷ 55	56 ÷ 95	90 ÷ 150

PORTS	54	55	65	66
P	G 3/4"	G 3/4"	G 1"	G 1"
A,B	G 1/2"	G 3/4"	G 3/4"	G 1"

EQUALIZING ORIFICE	
00	Plug
**	Orifice diameter**

** Ordering code examples
6D82520A055G06 orifice Ø 0,6 mm
6D82520A055G15 orifice Ø 1,5 mm
(maximum Ø 2,8 mm)