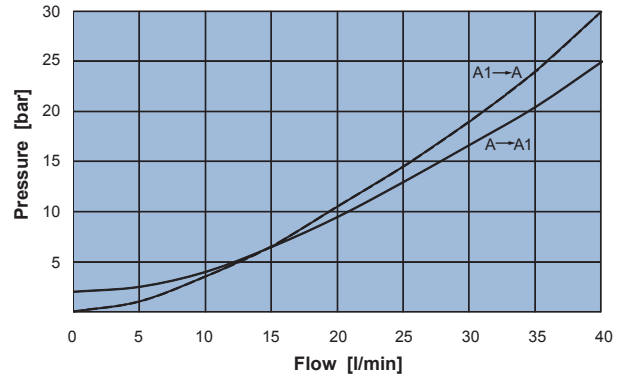
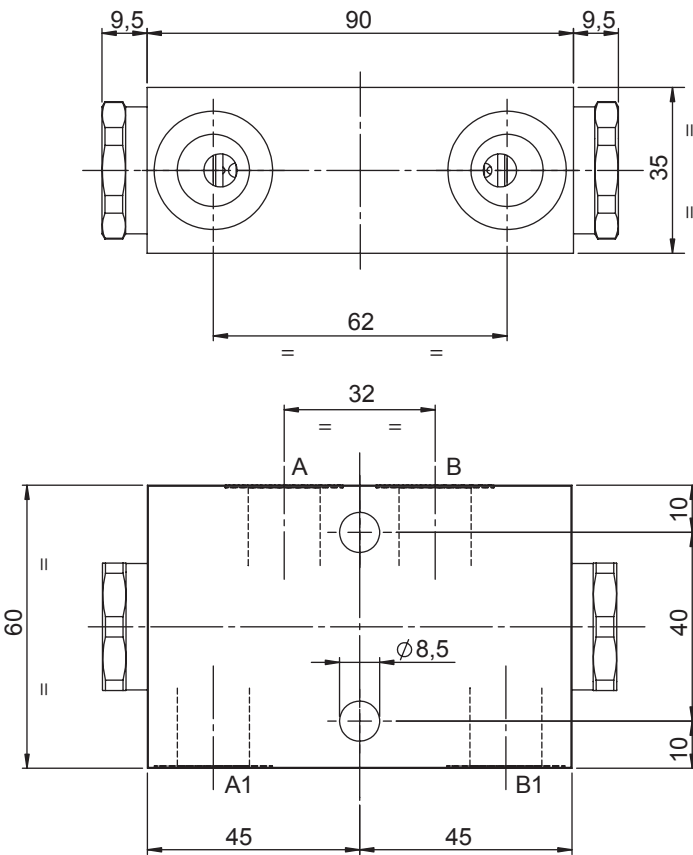
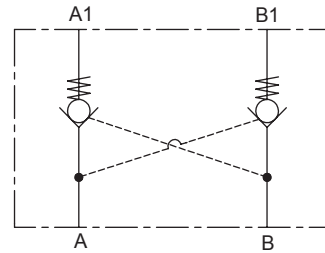


DOUBLE ACTING PILOT OPERATED CHECK VALVE

- Flow **40 l/min**
- Max working pressure **210 bar (Aluminium Body)**
- Max working pressure **350 bar (Steel Body)**
- Weight in steel **1,35 Kg**
- Weight in aluminium **0,64 Kg**



Ordering code

6 D 2 0 0 2 **0 0**

PILOT RATIO		
70	7:1	without seal
7A	7:1	with seal

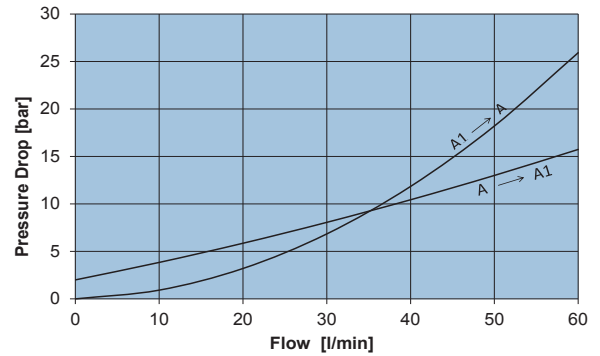
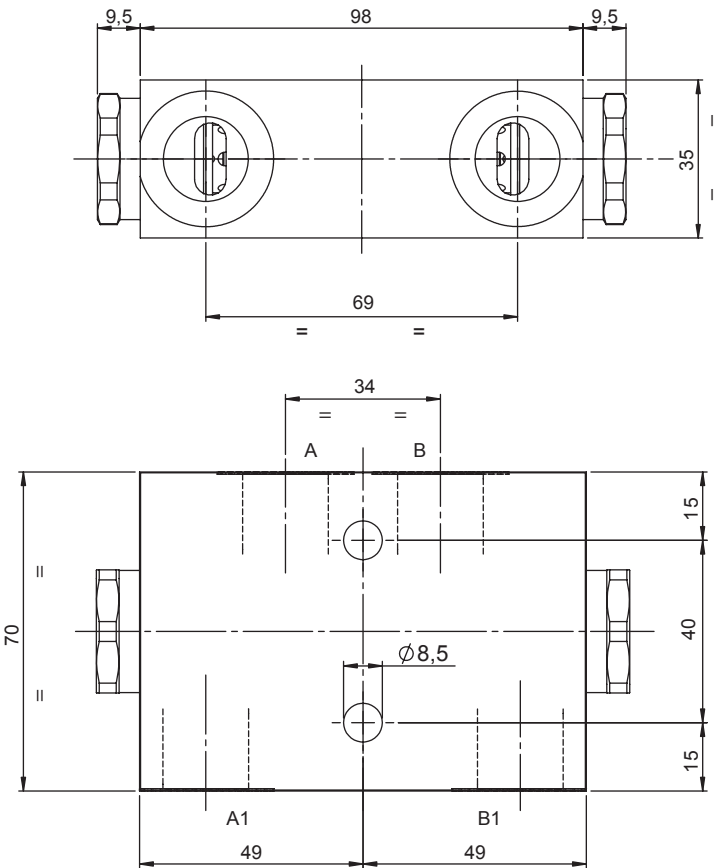
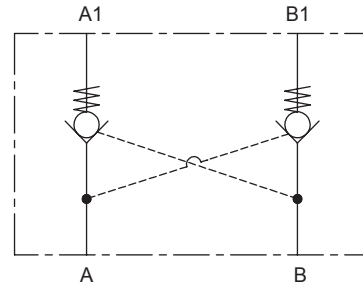
SPRING	1	2
Setting	2,0 bar	5,0 bar

MANIFOLD	
A	Alluminium
S	Steel

PORTS	03
A,B,A1,B1	G 3/8"

DOUBLE ACTING PILOT OPERATED CHECK VALVE

- Flow **60 l/min**
- Max working pressure **210 bar (Aluminium Body)**
- Max working pressure **350 bar (Steel Body)**
- Weight in steel **1,66 Kg**
- Weight in aluminium **0,75 Kg**



Ordering code

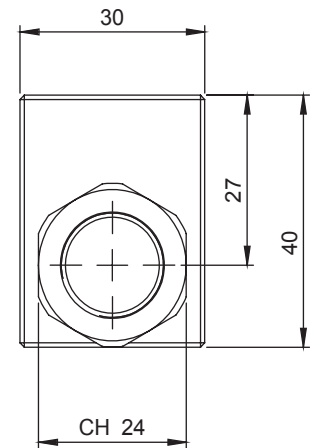
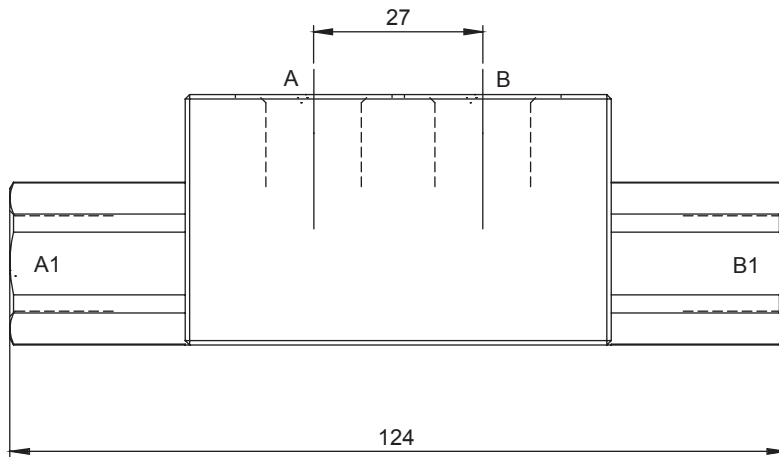
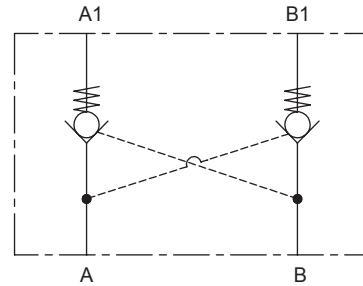
6 D 2 0 0 2 **0 0**

PILOT RATIO		SPRING		MANIFOLD		PORTS	
50	5:1 without seal	1	2	A	Alluminium	04	
		Setting	1,5 bar 3,5 bar	S	Steel	A,B,B1	G 1/2"
5A	5:1 with seal						



DOUBLE ACTING PILOT OPERATED CHECK VALVE

- Flow **30 l/min**
- Max working pressure **310 bar**
- Weight **0,65 Kg**



Ordering code

6 D 4 2 0 C **S** **0 0**

PILOT RATIO		
50	5:1	without seal

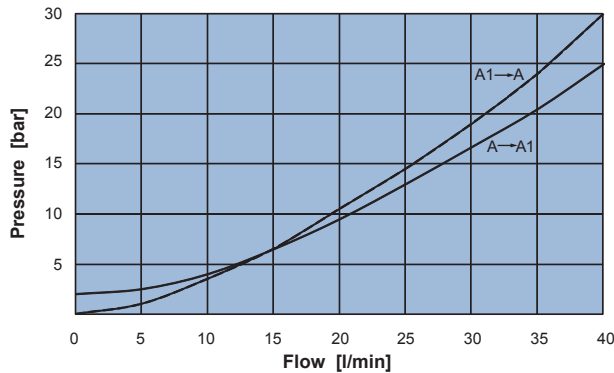
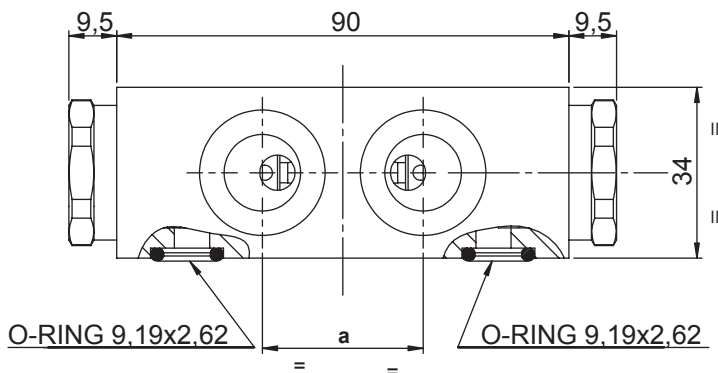
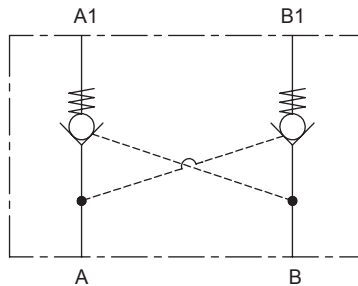
SPRING	
1	Setting 0,5 bar

PORTS	
03	A,A1,B,B1 G 3/8"

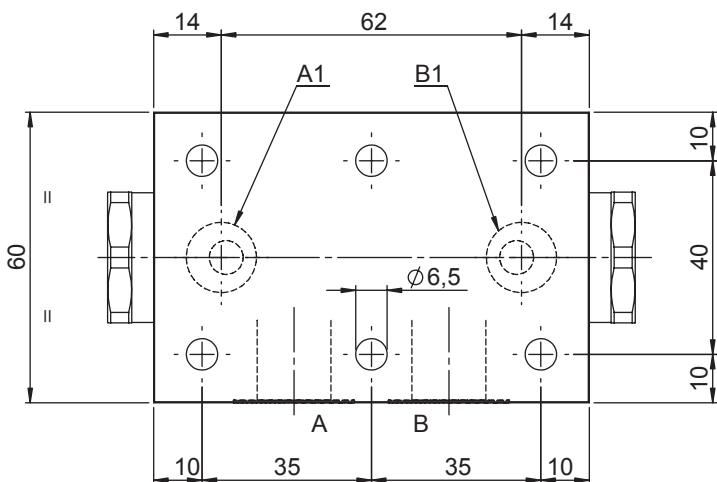
N.B.
Available also G 1/4" and G 1/2" ports.
Please, contact the Nem customer care for more details.

DOUBLE ACTING PILOT OPERATED CHECK VALVE - A1/B1 FLANGED PORT

- Flow **40 l/min**
- Max working pressure **210 bar (Aluminium Body)**
- Working pressure **350 bar (Steel Body)**
- Weight in steel **1,35 Kg**
- Weight in aluminium **0,64 Kg**



Note
Hardened seat available under request.
Contact NEM customer care for more details.



Ordering code

6 D 2 1 0 2 **0 0**

PILOT RATIO		
70	7:1	without seal
7A	7:1	with seal

SPRING		
	1	2
Setting	2,0 bar	5,0 bar

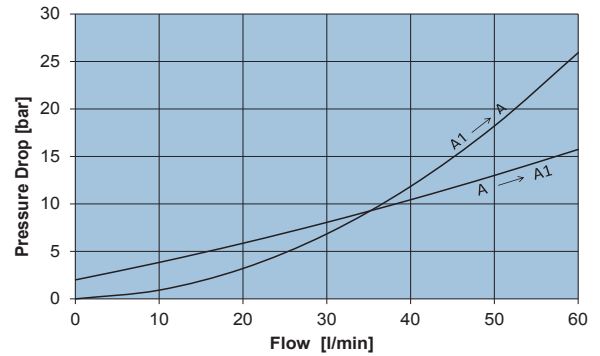
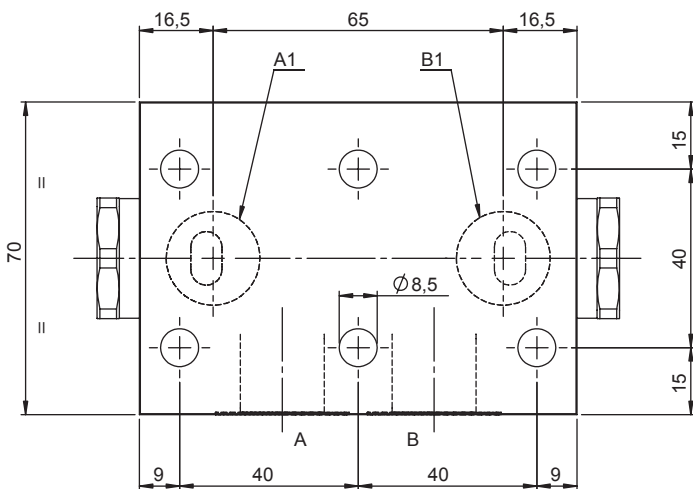
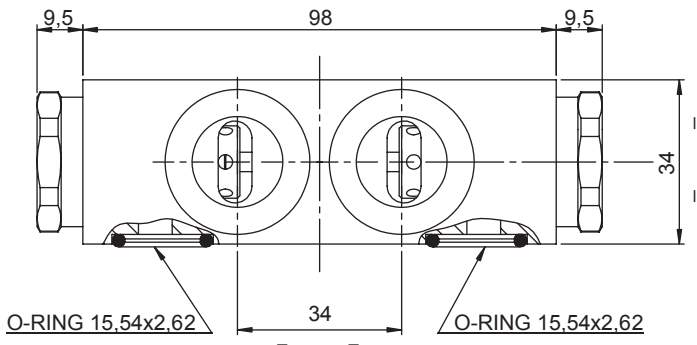
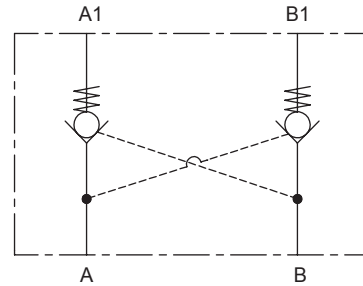
MANIFOLD	
A	Aluminium
S	Steel

PORTS		
	02	03
A,B	G 1/4"	G 3/8"
A1,B1	Ø 7	Ø 7
a	32	32



DOUBLE ACTING PILOT OPERATED CHECK VALVE - A1/B1 FLANGED PORT

- Flow **60 l/min**
- Max working pressure **210 bar (Aluminium Body)**
- Working pressure **350 bar (Steel Body)**
- Weight in steel **1,63 Kg**
- Weight in aluminium **0,64 Kg**



Ordering code

6 D 2 1 0 2 **0 0**

PILOT RATIO		SPRING		MANIFOLD		PORTS	
50	5:1 without seal	1	2	A	Aluminium	04	
		Setting	1,5 bar 3,5 bar	S	Steel		
5A	5:1 with seal						A,B, G 1/2"
							A1,B1 Ø 8