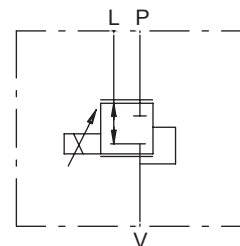
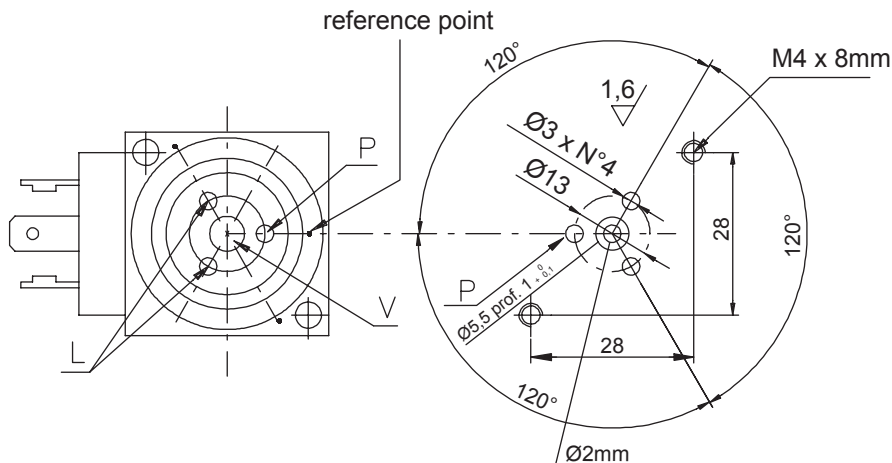
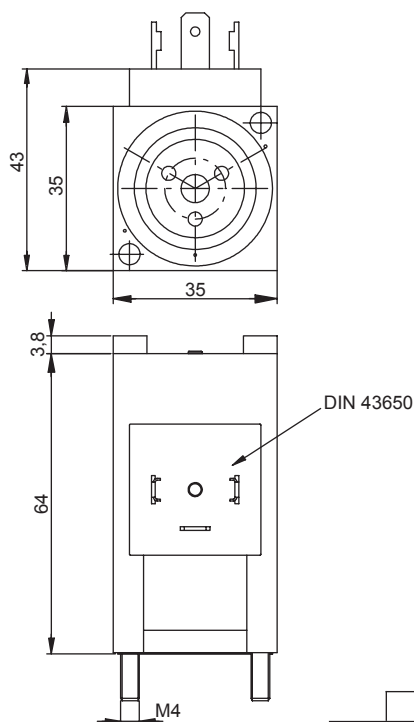
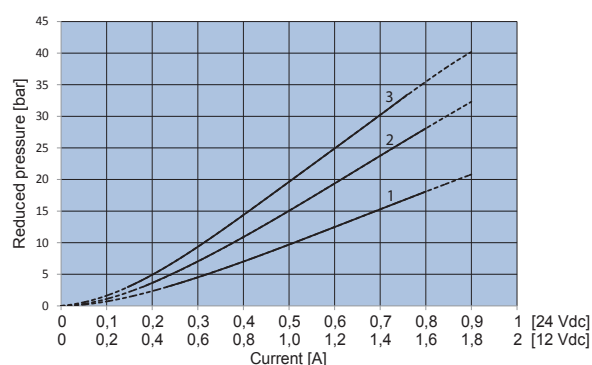


**PROPORTIONAL PRESSURE REDUCING VALVE FLANGE MOUNTING**

- Max working pressure in P..... **50 bar**
- Max working pressure in L..... **1 bar**
- Max working flow..... **2 l/min**
- Leakage..... **8 cc/min**
- Seals..... **NBR**
- Max current at 12 Vcc..... **1800 mA**
- Max current at 24 Vcc..... **900 mA**
- Hysteresis..... **5%**
- PWM..... **120 HZ**
- Protection index with standard connector..... **IP-65**
- Screw tightening torque..... **3 Nm**
- Weight..... **0,44 Kg**



COIL RESISTANCE [Ω]		VOLTAGE	
		1 (12Vcc)	2 (24Vcc)
REDUCED PRESSURE	1 (3+18 bar)	3,7	15,5
	2 (3+28 bar)	3,7	15,5
	3 (3+33 bar)	4,8	19,3



**Ordering code**

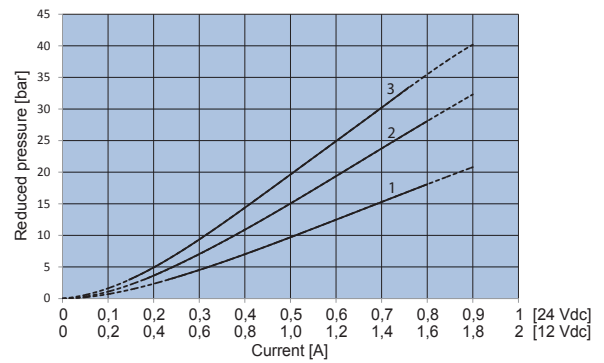
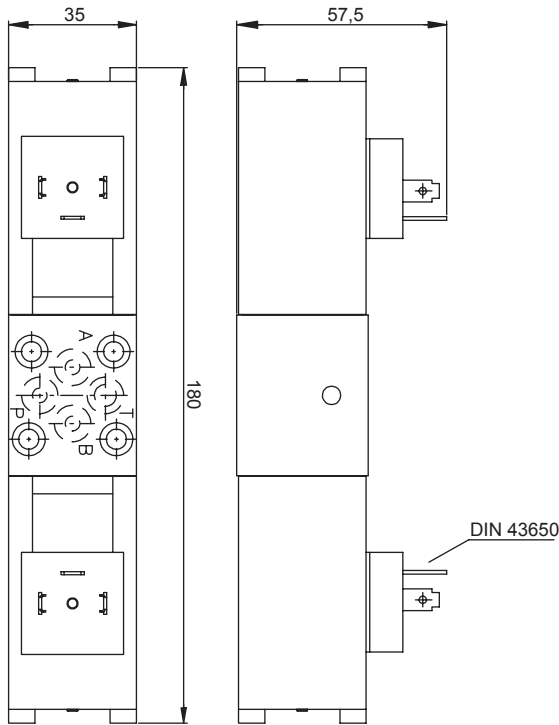
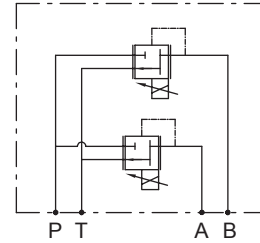
**1 0 2 7 0 0**       **0 0**

VOLTAGE	
<b>1</b>	<b>2</b>
12 Vcc	24Vcc

REDUCED PRESSURE		
<b>1</b>	<b>2</b>	<b>3</b>
3+18 bar	3+28 bar	3+33 bar

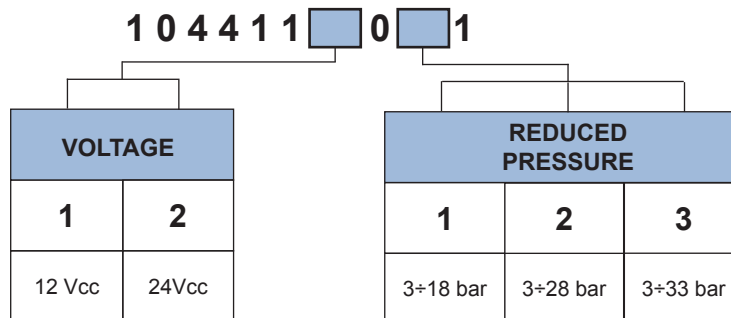
**DOUBLE PROPORTIONAL PRESSURE REDUCING VALVE**

- Max working pressure in P ..... **50 bar**
- Max working pressure in T ..... **1 bar**
- Max working flow ..... **2 l/min**
- Leakage ..... **8 cc/min**
- Seals ..... **NBR**
- Max current at 12 Vcc ..... **1800 mA**
- Max current at 24 Vcc ..... **900 mA**
- Hysteresis ..... **5%**
- PWM ..... **120 HZ**
- Protection index with standard connector ..... **IP-65**
- Weight ..... **1,42 Kg**



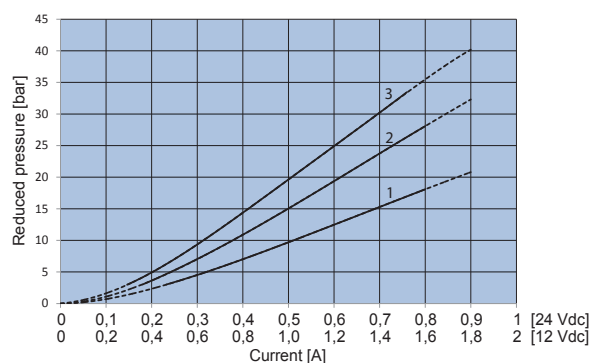
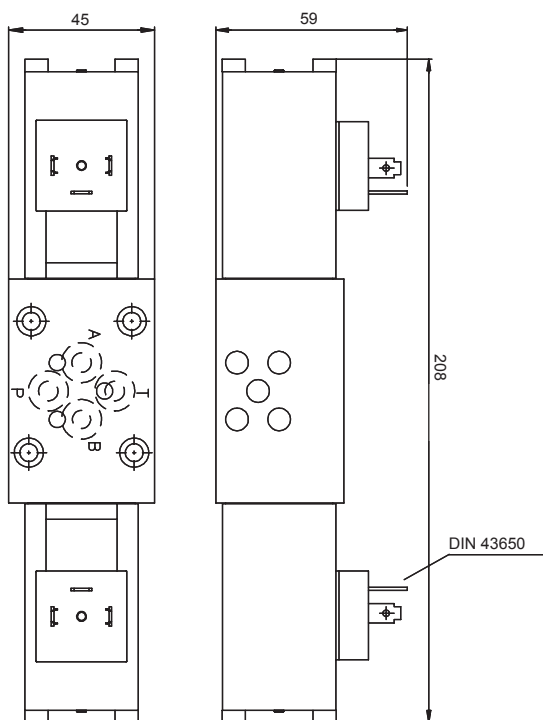
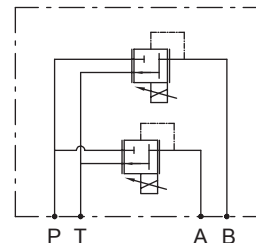
		VOLTAGE	
		1 (12Vcc)	2 (24Vcc)
REDUCED PRESSURE	1 (3÷18 bar)	3,7	15,5
	2 (3÷28 bar)	3,7	15,5
	3 (3÷33 bar)	4,8	19,3

**Ordering code**



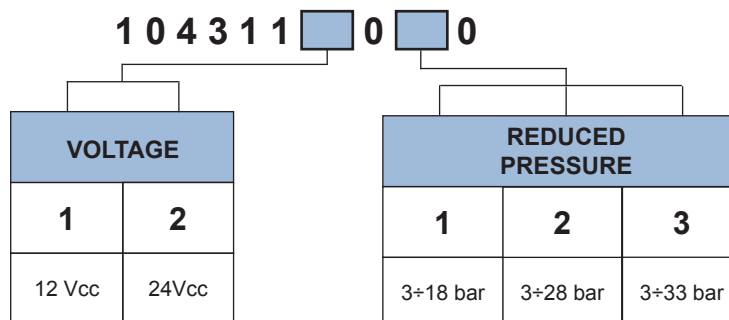
**DOUBLE PROPORTIONAL PRESSURE REDUCING VALVE**

- Max working pressure in P ..... **50 bar**
- Max working pressure in T ..... **1 bar**
- Max working flow ..... **2 l/min**
- Leakage ..... **8 cc/min**
- Seals ..... **NBR**
- Max current at 12 Vcc ..... **1800 mA**
- Max current at 24 Vcc ..... **900 mA**
- Hysteresis ..... **5%**
- PWM ..... **120 HZ**
- Protection index with standard connector ..... **IP-65**
- Weight ..... **1,42 Kg**



		VOLTAGE	
		1 (12Vcc)	2 (24Vcc)
REDUCED PRESSURE	1 (3÷18 bar)	3,7	15,5
	2 (3÷28 bar)	3,7	15,5
	3 (3÷33 bar)	4,8	19,3

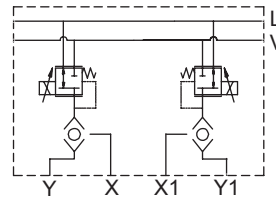
**Ordering code**



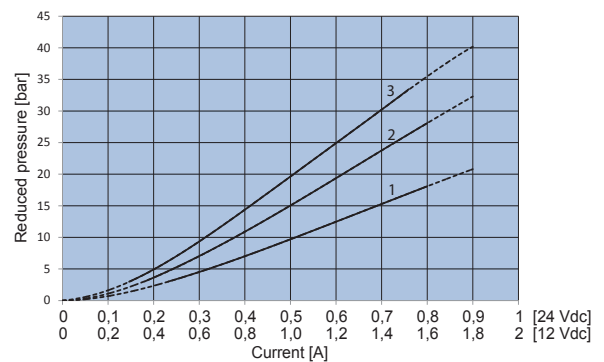
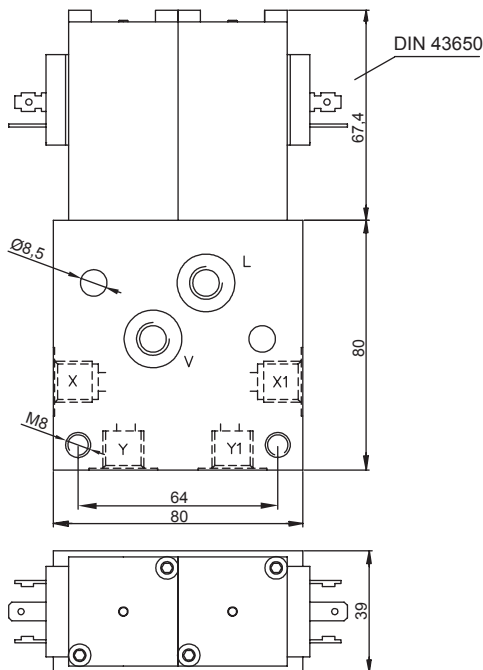
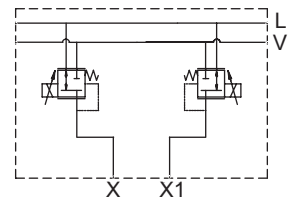
**REMOTE CONTROL MANIFOLDS FOR HYDRAULIC**

- Max working pressure in V ..... **50 bar**
- Max working pressure in X:X1:Y:Y1 ..... **28 bar**
- Max working pressure in L ..... **1 bar**
- Max working flow ..... **2 l/min**
- Leakage ..... **16 cc/min**
- Seals ..... **NBR**
- Max current at 12 Vcc ..... **1800 mA**
- Max current at 24 Vcc ..... **900 mA**
- Hysteresis ..... **5%**
- PWM ..... **120 HZ**
- Protection index with standard connector ..... **IP-65**
- Weight ..... **2,5 Kg**

**SCHEME 0**



**SCHEME 1**



		VOLTAGE	
		1 (12Vcc)	2 (24Vcc)
REDUCED PRESSURE	1 (3÷18 bar)	3,7	15,5
	2 (3÷28 bar)	3,7	15,5
	3 (3÷33 bar)	4,8	19,3

**Ordering code**

