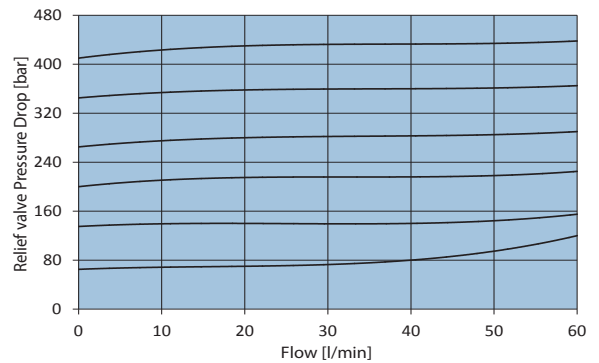
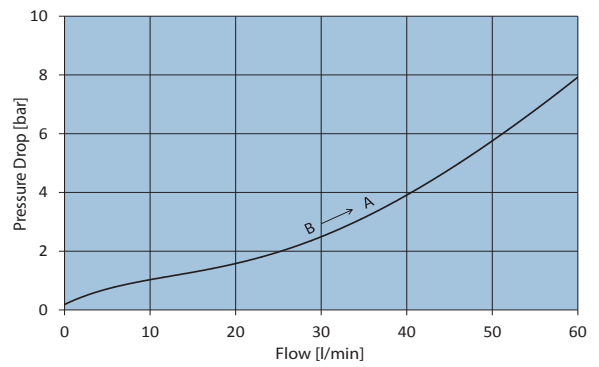
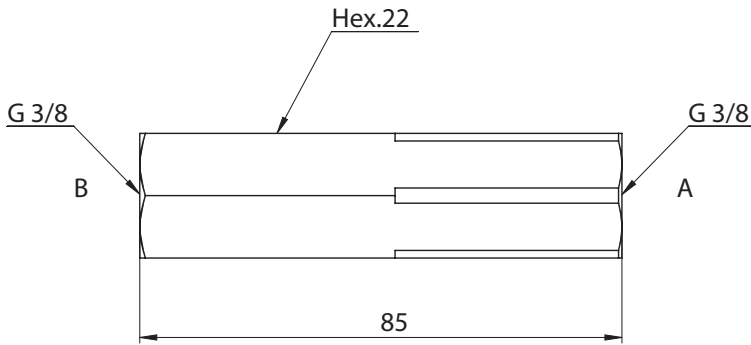
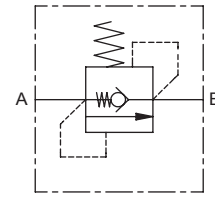


IN LINE SEQUENCE VALVE G3/8"

- Working flow. **60 l/min**
- Maximum working pressure. **350 bar**
- Check valve cracking pressure **< 0,5 bar**
- Weight. **0,186 Kg**
- Fixed setting

For customized settings contact the Nem customer care service



Ordering code

6 P 0 9 1 0 2 **0 0 0 0**

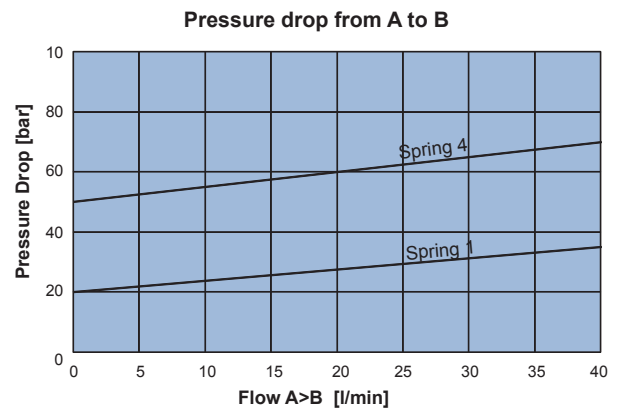
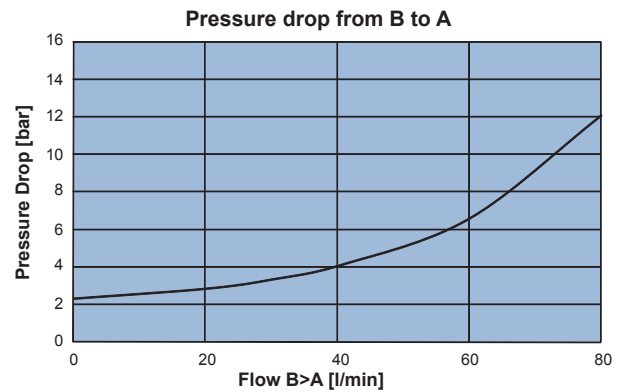
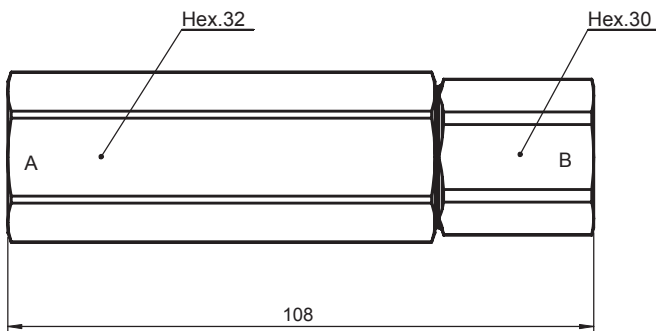
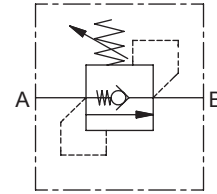
SPRINGS	1	2	3	4	5
Setting range min - max [bar]	20 - 70	70 - 130	130 - 210	210 - 280	280 - 350
Standard setting [bar] @ 10 l/min	50	100	180	250	300

PORTS	03
A,B	G 3/8"



IN LINE SEQUENCE VALVE G1/2"

- Working flow80 l/min
- Maximum working pressure350 bar
- Weight0,6 Kg



Ordering code

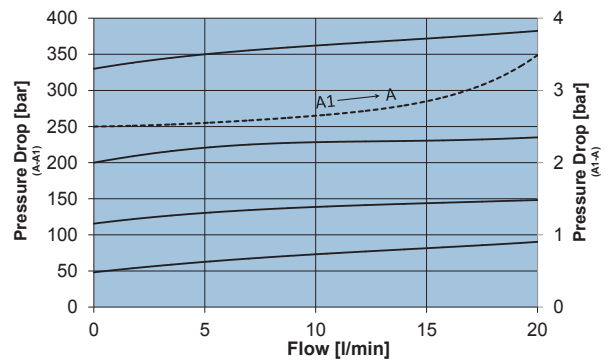
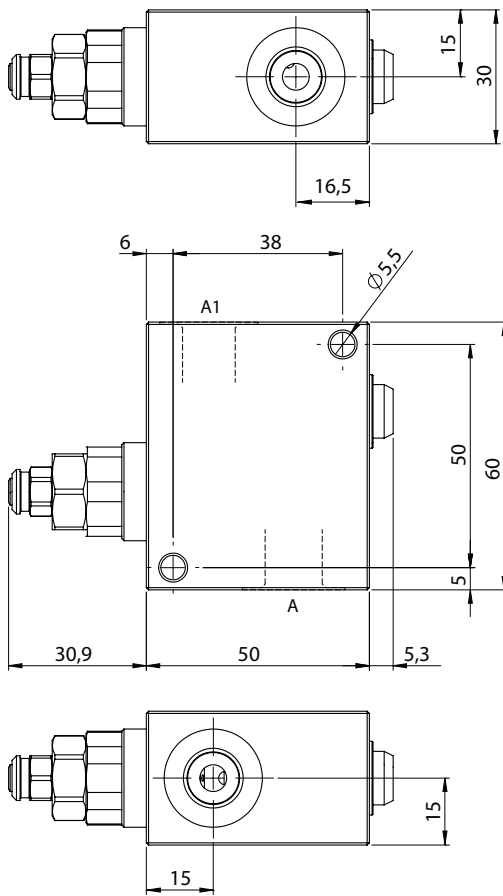
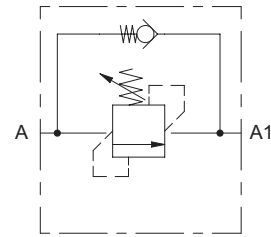
6 P 0 6 1 S 0 0 0 **0 0**

SPRINGS	1	4
Setting range min - max [bar]	10 - 30	25 - 90
bar/turn	9	28
Standard setting [bar] @ 4 l/min	20	50

PORTS	04
A,B	G 1/2"

DIRECT ACTING SEQUENCE VALVE G1/4", POPPET TYPE

- Flow.....**20 l/min**
- Maximum working pressure.....**210 bar**
- Check valve cracking pressure.....**2,5 bar**
- Weight.....**0,31 Kg**
- Tamper proof cap.....**cod. 9021015101**



Ordering code

6 P 0 1 0 8 0 0 **A** **0 0**

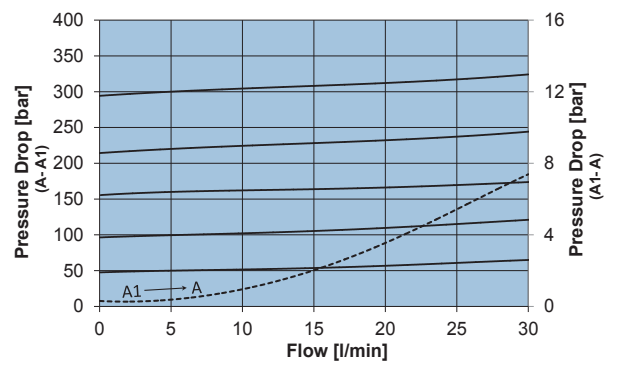
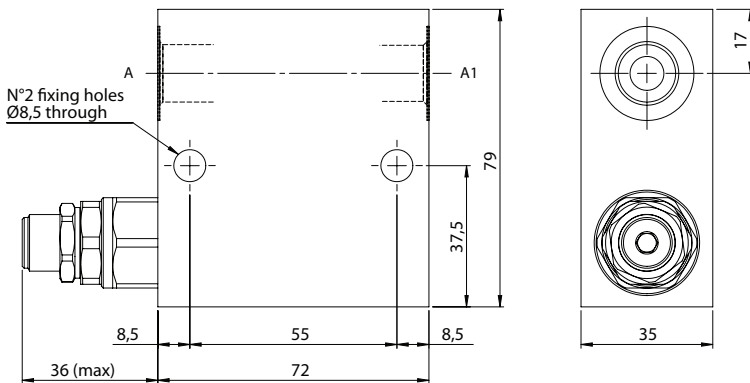
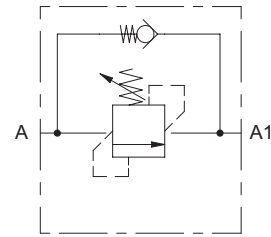
SPRINGS	1	2	3
Setting range min.-max. [bar]	5 - 160	40 - 220	50 - 350
Pressure Increase [bar/turn]	36	34	63
Standard setting 4 l/min [bar]	50	100	250

PORTS	02
A,A1	G 1/4"



DIRECT ACTING SEQUENCE VALVE, POPPET TYPE

- Flow.....**30 l/min**
- Maximum working pressure.....**210 bar**
- Check valve cracking pressure.....**0,3 bar**
- Weight.....**0,64 Kg**



Ordering code

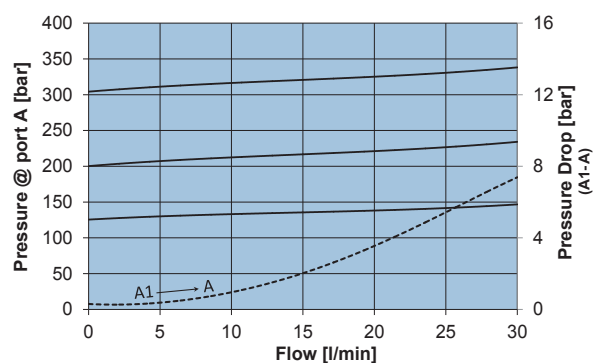
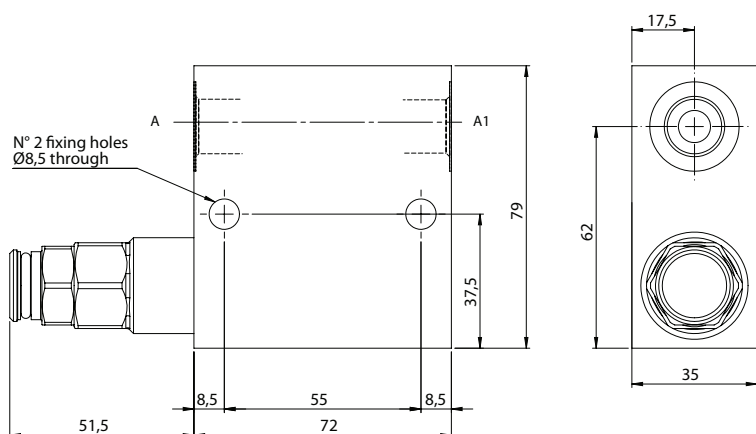
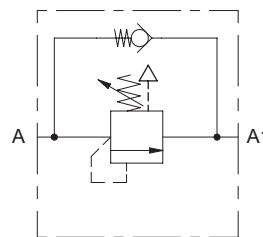
6 P 0 1 0 8 0 0 **A** **0 0**

SPRINGS	0	1	2	3
Setting range [bar]	15-50	50-120	120-200	200-350
Pressure Increase [bar/turn]	8	20	33	59
Standard setting 4 l/min [bar]	25	100	150	250

PORTS	03	04
A,A1	G 3/8"	G 1/2"

SEQUENCE VALVE, POOL TYPE - BACK PRESSURE COMPENSATED

- Flow **30 l/min**
- Maximum working pressure **210 bar**
- Check valve cracking pressure **0,3 bar**
- Weight **0,71 Kg**
- Tamper proof cap **cod. 9021030190**



Ordering code

6 P 0 1 1 0 1 0 **A** **0 0**

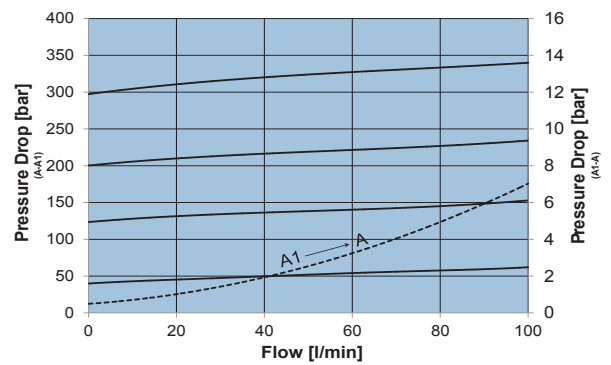
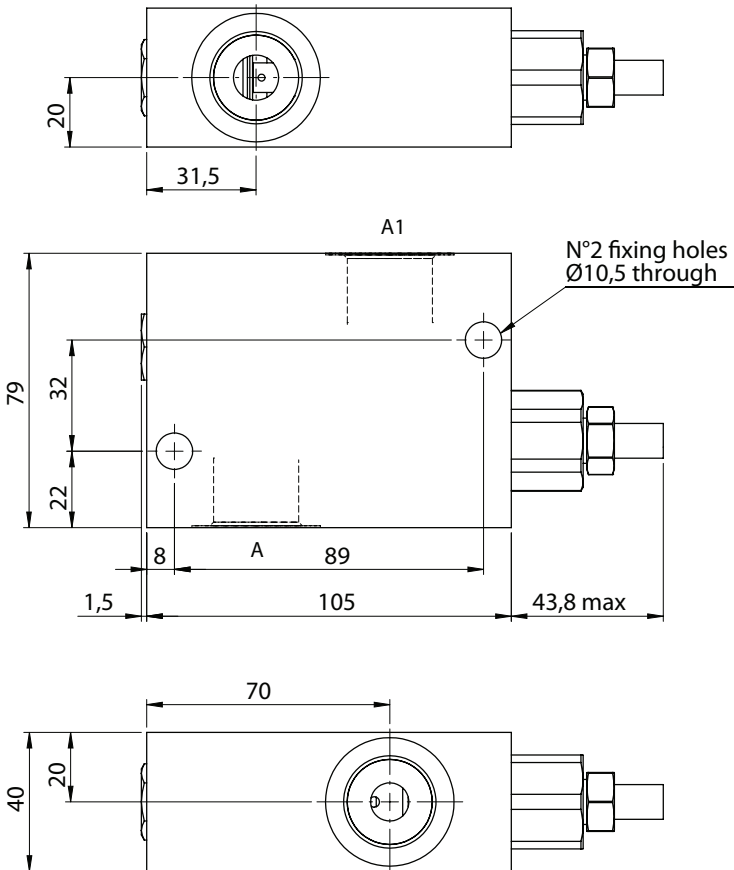
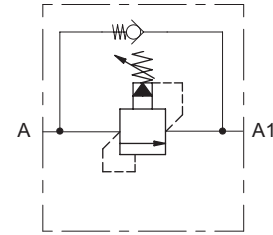
SPRINGS	2	3
Setting range min.-max. [bar]	120 - 250	220 - 410
Pressure Increase [bar/by turn]	31	53
Standard setting 4 l/min [bar]	150	250

PORTS	03	04
A,A1	G 3/8"	G 1/2"

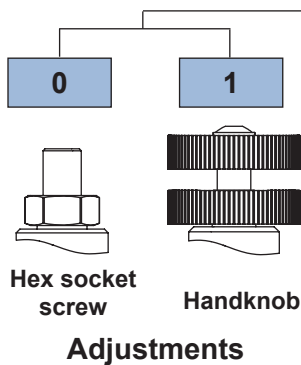


PILOT OPERATED SEQUENCE VALVE, POOL TYPE

- Flow **100 l/min**
- Maximum working pressure **210 bar**
- Check valve cracking pressure **0,5 bar**
- Weight **1,02 Kg**
- Tamper proof cap **cod. 4029250280**



6 P 0 1 1 0 2 **A** **0 0**



SPRINGS	3
Setting range min.-max. [bar]	20 - 350
Pressure Increase [bar/by turn]	136
Standard setting 4 l/min [bar]	100

PORTS	04	05
A,A1	G 1/2"	G 3/4"